

Certificate of Survey

From the office of
GEORGI-SCHMIDT & ASSOC. INC.
3092 No. Lexington Ave., Roseville, Mn. 55113
LAND SURVEYING
483-4408

I Hereby Certify that this plat shows a survey made by me of the property described on this plat, and that the corners are correctly placed as shown;

Job Number: _____

Surveyed For Humane Society

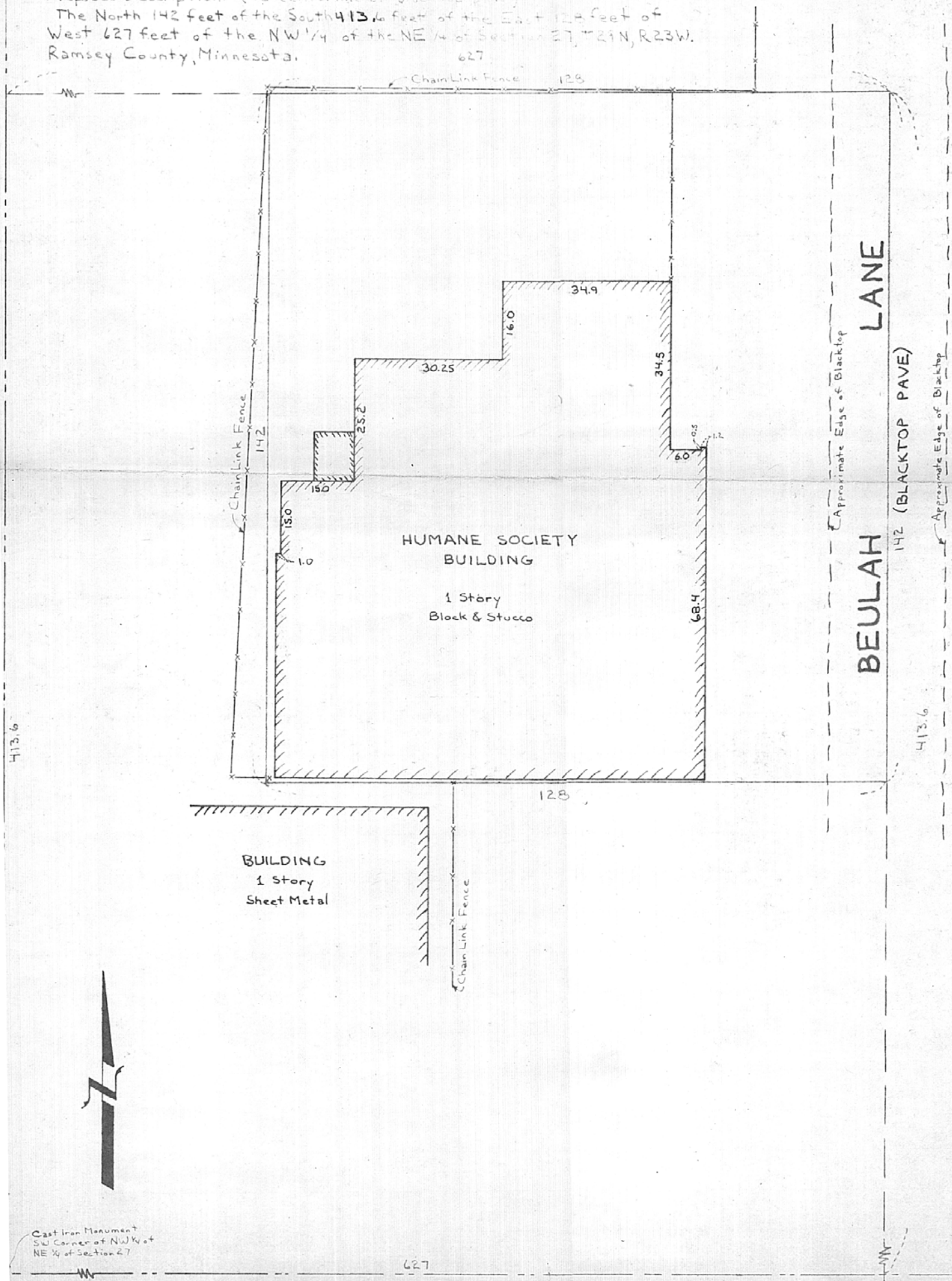
Date September 13, 1984 No irons set to date

Scale 1" = 20'

*3 TO R. OLSON
9/13/84*

By _____
REGISTERED LAND SURVEYOR

Proposed Description: (to centerline of blacktop drive)
The North 142 feet of the South 413.6 feet of the East 128 feet of
West 627 feet of the NW 1/4 of the NE 1/4 of Section 27, T29N, R23W,
Ramsey County, Minnesota.



Cast Iron Monument
NW Corner of
NE 1/4 of Section 27

Cast Iron Monument
SE Corner of NE 1/4 of
NE 1/4 of Section 27

Cast Iron Monument
SW Corner of NW 1/4 of
NE 1/4 of Section 27

627

413.6

413.6