

Certificate of Survey

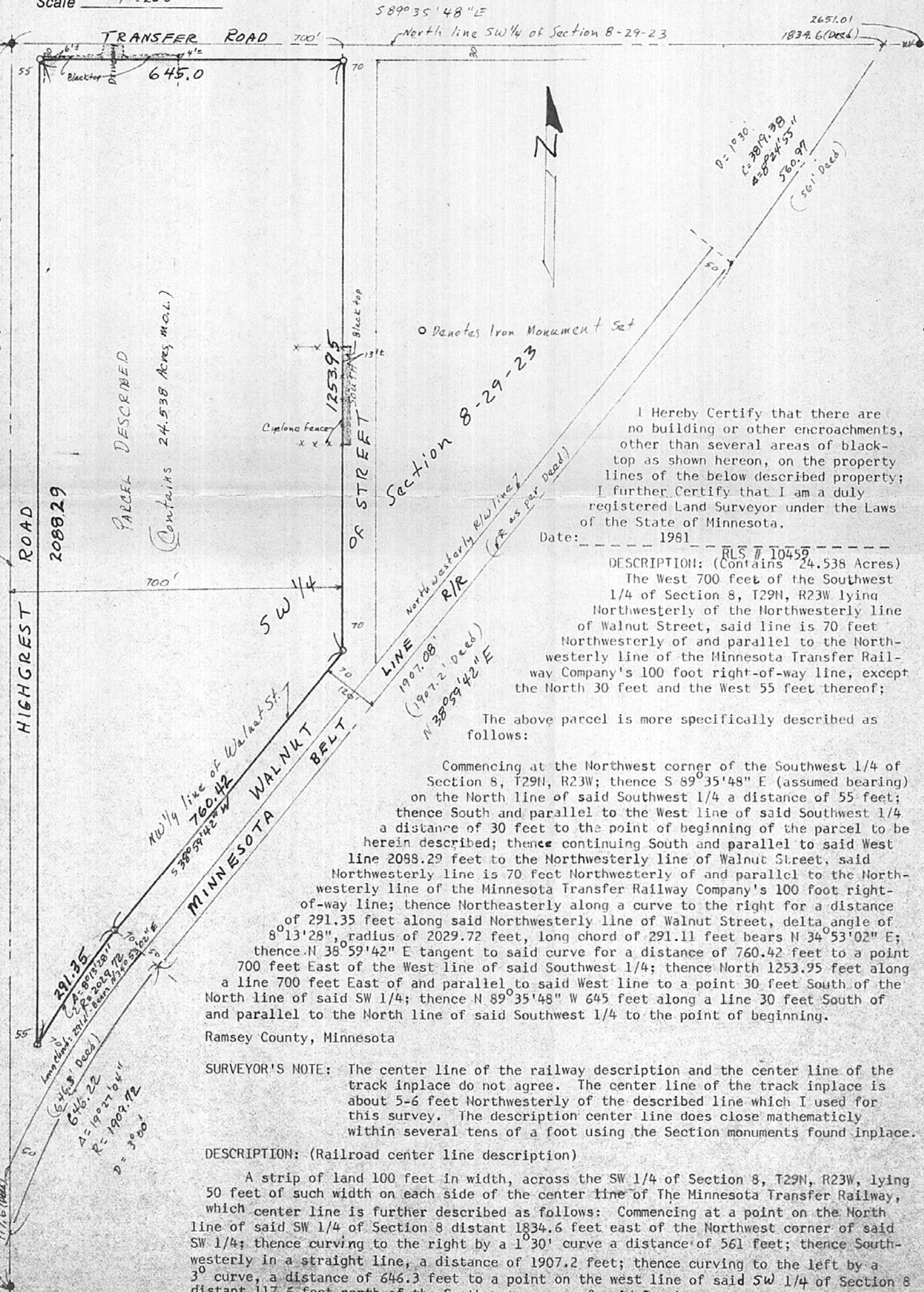
From the office of
GEORGI-SCHMIDT & ASSOC. INC.
3092 No. Lexington Ave., Roseville, Mn. 55113
LAND SURVEYING
483-4408

I Hereby Certify that this plat shows a survey made by me of the property described on this plat, and that the corners are correctly placed as shown, and that all locations have been correctly shown.

Job Number: 722
Surveyed For Space Center, Inc.
Date 8/29/80 - Revised 2/25/81 DWS
Scale 1"=200'

By Georgi W. Schmidt
REGISTERED LAND SURVEYOR

(NW corner of SW 1/4)
West 1/4 corner of
Sec. 8-29-23



West line of SW 1/4 of Section 8-29-23

NORTH
2633.85

HIGHCREST ROAD

2088.29

PARCEL DESCRIBED

(Contains 24.538 Acres (M.O.L.))

Cypress fence
x x x

Black top

1253.95

OF STREET

SW 1/4

70

70

70

70

70

70

70

70

70

70

70

70

70

70

70

70

70

70

70

70

70

70

70

70

70

70

70

70

70

70

70

70

70

70

70

70

70

70

70

70

70

70

70

70

70

70

70

70

70

70

70

70

70

70

70

70

70

70

70

70

70

70

70

70

70

70

70

70

70

70

70

70

70

70

70

70

70

70

70

70

70

70

70

70

70

70

70

70

70

70

70

70

70

70

70

70

70

70

70

70

70

70

70

70

70

70

70

70

70

70

70

70

70

70

70

70

70

70

70

70

70

70

70

70

70

70

70

70

70

70

70

70

70

70

70

70

70

70

70

70

70

70

70

70

70

70

70

70

70

70

70

70

70

70

70

70

70

70

70

70

70

70

70

70

70

70

70

70

70

70

70

70

70

70

70

70

70

70

70

70

70

70

70

70

70

70

70

70

70

70

70

70

70

70

70

70

70

70

70

70

70

70

70

70

70

70

70

70

70

70

70

70

70

70

70

70

70

70

70

70

70

70

70

70

70

70

70

70

70

70

70

70

70

70

70

5890 35' 48" E

North line SW 1/4 of Section 8-29-23

2651.01
1834.6 (Deed)

D = 1930
L = 2819.38
R = 2824.55
561.97
(561' Deed)

o Denotes Iron Monument Set

Section 8-29-23
North westerly R/W line
R/R (R as per Deed)

I Hereby Certify that there are no building or other encroachments, other than several areas of black-top as shown hereon, on the property lines of the below described property; I further Certify that I am a duly registered Land Surveyor under the Laws of the State of Minnesota.
Date: 1981

DESCRIPTION: (Contains 24.538 Acres)
The West 700 feet of the Southwest 1/4 of Section 8, T29N, R23W lying Northwesterly of the Northwesterly line of Walnut Street, said line is 70 feet Northwesterly of and parallel to the Northwesterly line of the Minnesota Transfer Railway Company's 100 foot right-of-way line, except the North 30 feet and the West 55 feet thereof;

The above parcel is more specifically described as follows:

Commencing at the Northwest corner of the Southwest 1/4 of Section 8, T29N, R23W; thence S 89°35'48" E (assumed bearing) on the North line of said Southwest 1/4 a distance of 55 feet; thence South and parallel to the West line of said Southwest 1/4 a distance of 30 feet to the point of beginning of the parcel to be herein described; thence continuing South and parallel to said West line 2088.29 feet to the Northwesterly line of Walnut Street, said Northwesterly line is 70 feet Northwesterly of and parallel to the Northwesterly line of the Minnesota Transfer Railway Company's 100 foot right-of-way line; thence Northeasterly along a curve to the right for a distance of 291.35 feet along said Northwesterly line of Walnut Street, delta angle of 8°13'28", radius of 2029.72 feet, long chord of 291.11 feet bears N 34°53'02" E; thence N 38°59'42" E tangent to said curve for a distance of 760.42 feet to a point 700 feet East of the West line of said Southwest 1/4; thence North 1253.95 feet along a line 700 feet East of and parallel to said West line to a point 30 feet South of the North line of said SW 1/4; thence N 89°35'48" W 645 feet along a line 30 feet South of and parallel to the North line of said Southwest 1/4 to the point of beginning.

Ramsey County, Minnesota

SURVEYOR'S NOTE: The center line of the railway description and the center line of the track in place do not agree. The center line of the track in place is about 5-6 feet Northwesterly of the described line which I used for this survey. The description center line does close mathematically within several tens of a foot using the Section monuments found in place.

DESCRIPTION: (Railroad center line description)

A strip of land 100 feet in width, across the SW 1/4 of Section 8, T29N, R23W, lying 50 feet of such width on each side of the center line of The Minnesota Transfer Railway, which center line is further described as follows: Commencing at a point on the North line of said SW 1/4 of Section 8 distant 1834.6 feet east of the Northwest corner of said SW 1/4; thence curving to the right by a 1°30' curve a distance of 561 feet; thence Southwesterly in a straight line, a distance of 1907.2 feet; thence curving to the left by a 3° curve, a distance of 646.3 feet to a point on the west line of said SW 1/4 of Section 8 distant 117.6 feet north of the Southwest corner of said Section.

SW corner of
Sec. 8-29-23
117.6 (Deed)

291.35
A = 8°13'28"
R = 2029.72
L = 291.11
Bears N 34°53'02" E

646.3
A = 3°
R = 1909.72
L = 646.3

Certificate of Survey

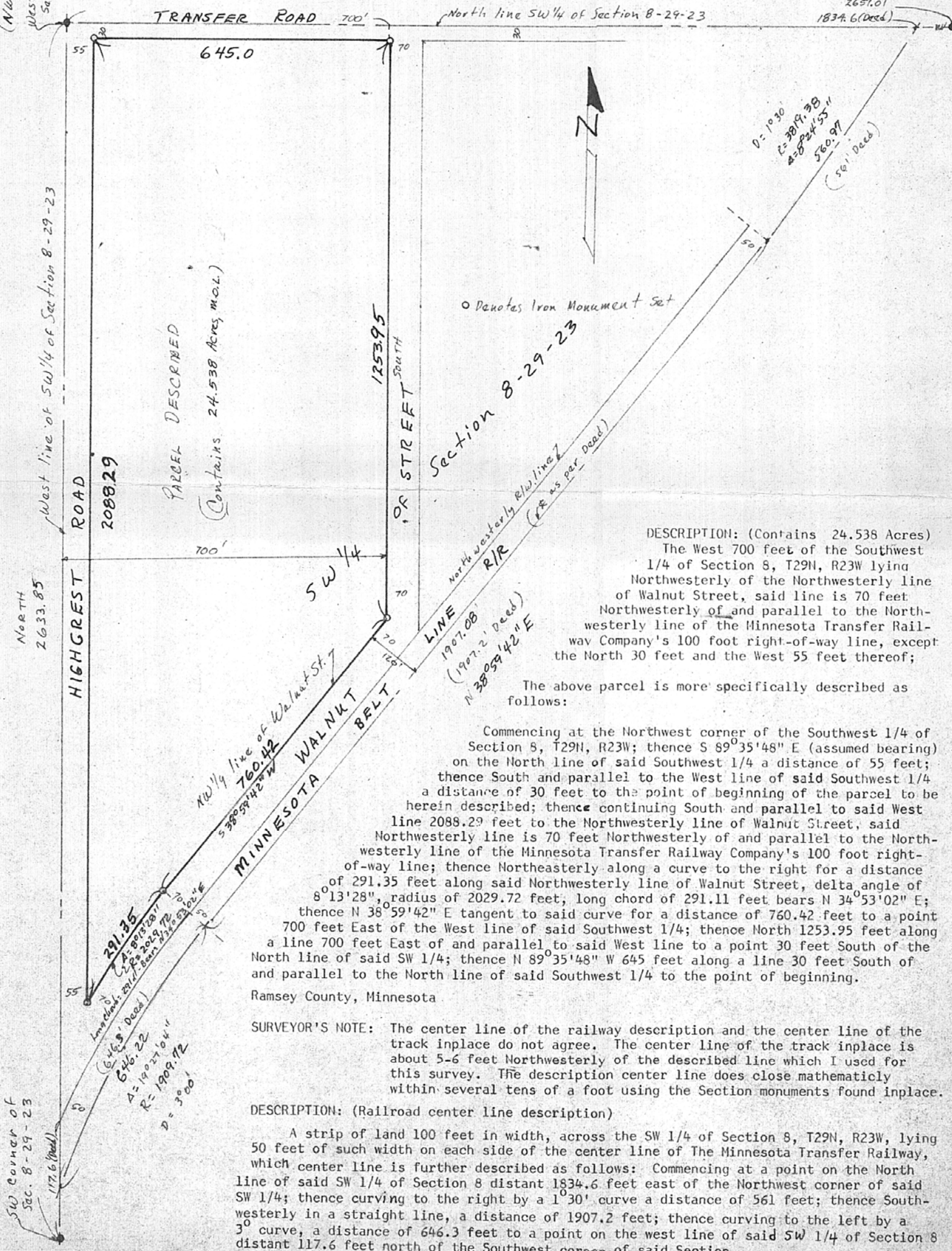
From the office of
GEORGI-SCHMIDT & ASSOC. INC.
3092 No. Lexington Ave., Roseville, Mn. 55113
LAND SURVEYING
483-4408

I Hereby Certify that this plat shows a survey made by me of the property described on this plat, and that the corners are correctly placed as shown, and that all locations have been correctly shown.

Job Number: 722
Surveyed For Space Center, Inc.
Date 8/29/80
Scale 1"=200'

By Donald W. Schmidt
REGISTERED LAND SURVEYOR

(NW corner of SW 1/4)
West 1/4 corner of
Sec. 8-29-23



DESCRIPTION: (Contains 24.538 Acres)
The West 700 feet of the Southwest 1/4 of Section 8, T29N, R23W lying Northwesternly of the Northwesternly line of Walnut Street, said line is 70 feet Northwesternly of and parallel to the Northwesternly line of the Minnesota Transfer Railway Company's 100 foot right-of-way line, except the North 30 feet and the West 55 feet thereof;

The above parcel is more specifically described as follows:
Commencing at the Northwest corner of the Southwest 1/4 of Section 8, T29N, R23W; thence S 89°35'48" E (assumed bearing) on the North line of said Southwest 1/4 a distance of 55 feet; thence South and parallel to the West line of said Southwest 1/4 a distance of 30 feet to the point of beginning of the parcel to be herein described; thence continuing South and parallel to said West line 2088.29 feet to the Northwesternly line of Walnut Street, said Northwesternly line is 70 feet Northwesternly of and parallel to the Northwesternly line of the Minnesota Transfer Railway Company's 100 foot right-of-way line; thence Northeastly along a curve to the right for a distance of 291.35 feet along said Northwesternly line of Walnut Street, delta angle of 8°13'28", radius of 2029.72 feet, long chord of 291.11 feet bears N 34°53'02" E; thence N 38°59'42" E tangent to said curve for a distance of 760.42 feet to a point 700 feet East of the West line of said Southwest 1/4; thence North 1253.95 feet along a line 700 feet East of and parallel to said West line to a point 30 feet South of the North line of said SW 1/4; thence N 89°35'48" W 645 feet along a line 30 feet South of and parallel to the North line of said Southwest 1/4 to the point of beginning.
Ramsey County, Minnesota

SURVEYOR'S NOTE: The center line of the railroad description and the center line of the track in-place do not agree. The center line of the track in-place is about 5-6 feet Northwesternly of the described line which I used for this survey. The description center line does close mathematically within several tens of a foot using the Section monuments found in-place.

DESCRIPTION: (Railroad center line description)
A strip of land 100 feet in width, across the SW 1/4 of Section 8, T29N, R23W, lying 50 feet of such width on each side of the center line of The Minnesota Transfer Railway, which center line is further described as follows: Commencing at a point on the North line of said SW 1/4 of Section 8 distant 1834.6 feet east of the Northwest corner of said SW 1/4; thence curving to the right by a 1°30' curve a distance of 561 feet; thence Southwesterly in a straight line, a distance of 1907.2 feet; thence curving to the left by a 3° curve, a distance of 646.3 feet to a point on the west line of said SW 1/4 of Section 8 distant 117.6 feet north of the Southwest corner of said Section.