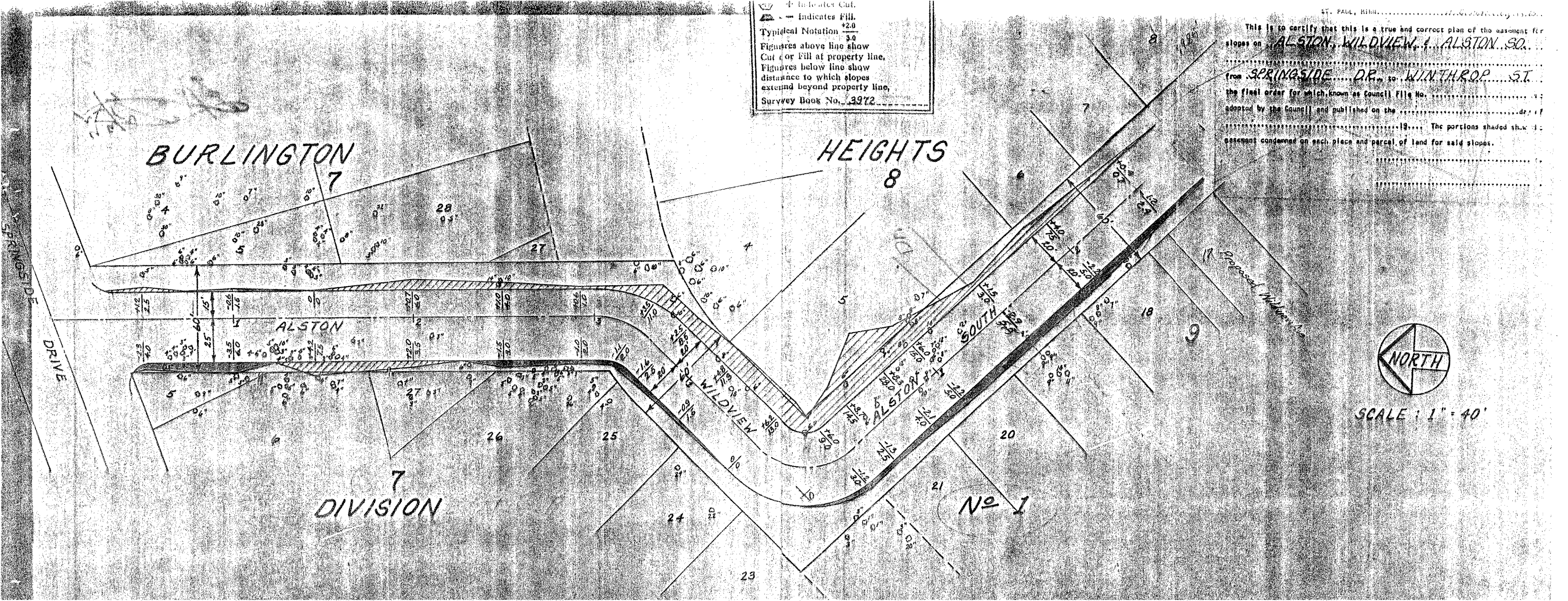


+ Indicates Cut.  
 - Indicates Fill.  
 Typical Notation  $\frac{+2.0}{5.0}$   
 Figures above line show  
 Cut or Fill at property line.  
 Figures below line show  
 distance to which slopes  
 extend beyond property line,  
 Survey Book No. 3972

This is to certify that this is a true and correct plan of the easement for  
 slopes on ALSTON, WILDVIEW, & ALSTON SO.  
 from SPRINGSIDE DR. to WINTHROP ST.  
 the final order for which, known as Council File No. ....  
 adopted by the Council and published on the .....  
 The portions shaded show  
 easement condemned on each piece and parcel of land for said slopes.



SCALE : 1" = 40'