

**Certificate
of Survey**

From the office of
GEORGI-SCHMIDT & ASSOC. INC.
3092 No. Lexington Ave., Roseville, Mn. 55113
LAND SURVEYING
483-4408

I Hereby Certify that this plat shows a survey made by me of the property described on this plat, and that the corners are correctly placed as shown, and that all locations have been correctly shown.

Job Number: 737

Surveyed For Bernhart Const. Inc.

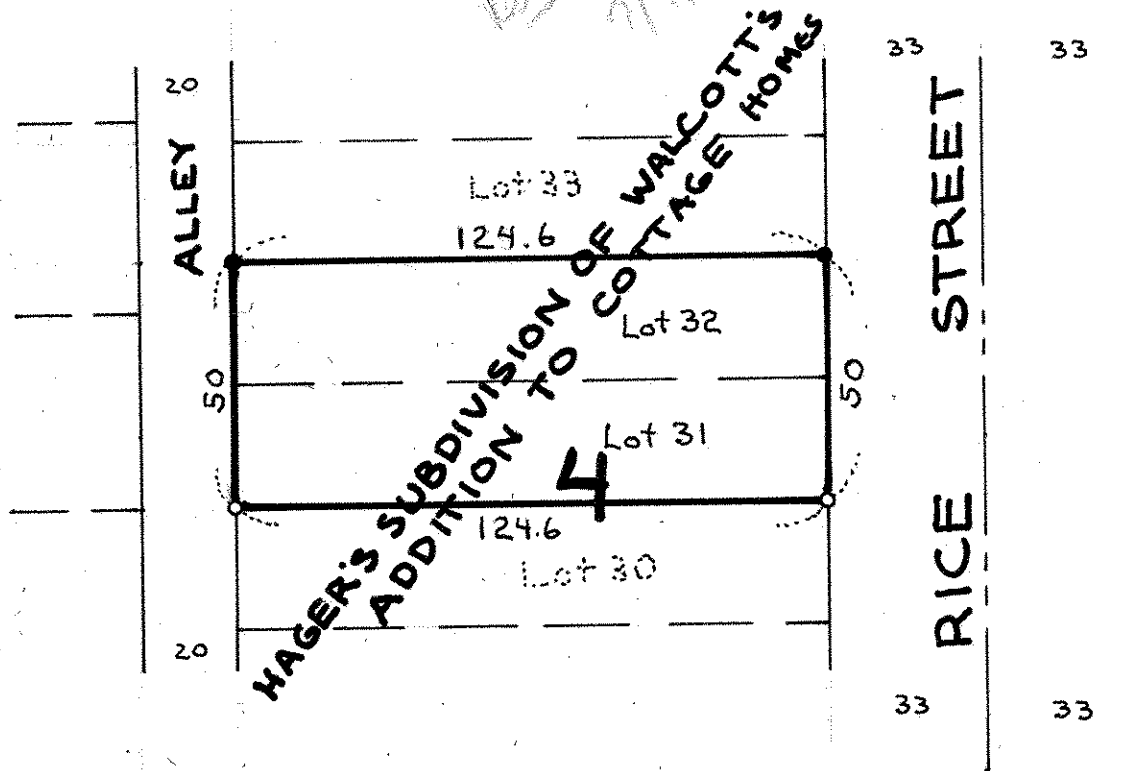
Date September 8, 1980

Scale 1" = 40'

By Donald W. Schmedel
REGISTERED LAND SURVEYOR

Description:

Lots 31 and 32,
Block 4,
Hager's Subdivision of Walcott's
Addition to Cottage Homes,
Ramsey County, Minnesota.



- Denotes Iron Monument found in place
- Denotes Iron Pipe Monument set