

NE 24 29 23

Certificate of Survey

From the office of GEORGI-SCHMIDT & ASSOC. INC. 3092 No. Lexington Ave., Roseville, Mn. 55113 LAND SURVEYING 483-4408

I Hereby Certify that this plat shows a survey made by me of the property described on this plat, and that the corners are correctly placed as shown, and that all locations have been correctly shown.

Job Number: 744

Surveyed For Bernhart Const. Inc.

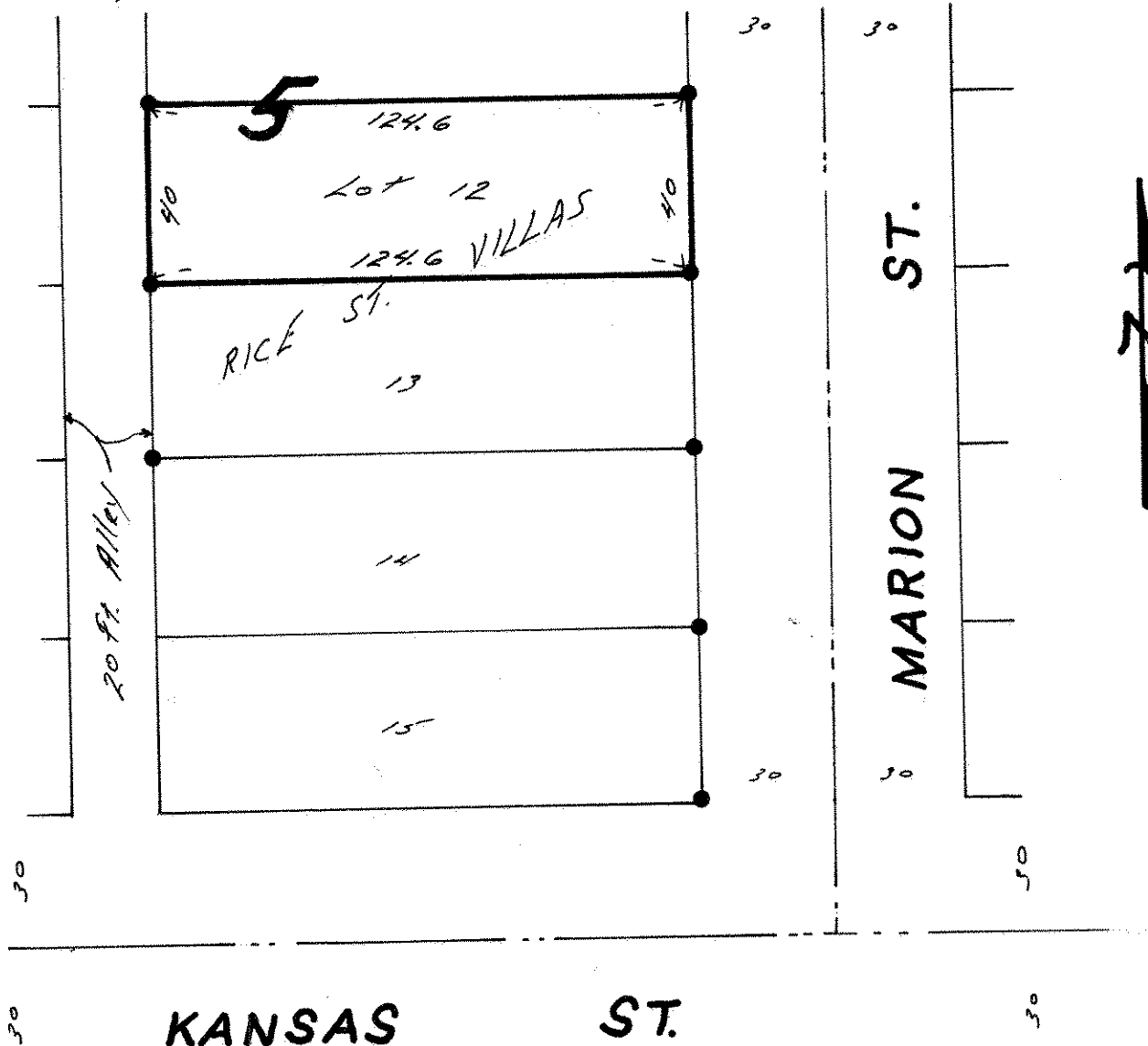
Date Sept. 1980

Scale 1" = 40'

By Donald W. Schmidt REGISTERED LAND SURVEYOR

Description:

Lot 12, Block 5 Rice St. Villas Ramsey County, Minn.



• denotes iron pipe monument found