

**Certificate  
of Survey**

From the office of  
**GEORGI-SCHMIDT & ASSOC. INC.**

3092 No. Lexington Ave., Roseville, Mn. 55113

LAND SURVEYING

483-4408

I Hereby Certify that this plat shows a survey made by me of the property described on this plat, and that the corners are correctly placed as shown, and that all locations have been correctly shown.

Job Number: 611

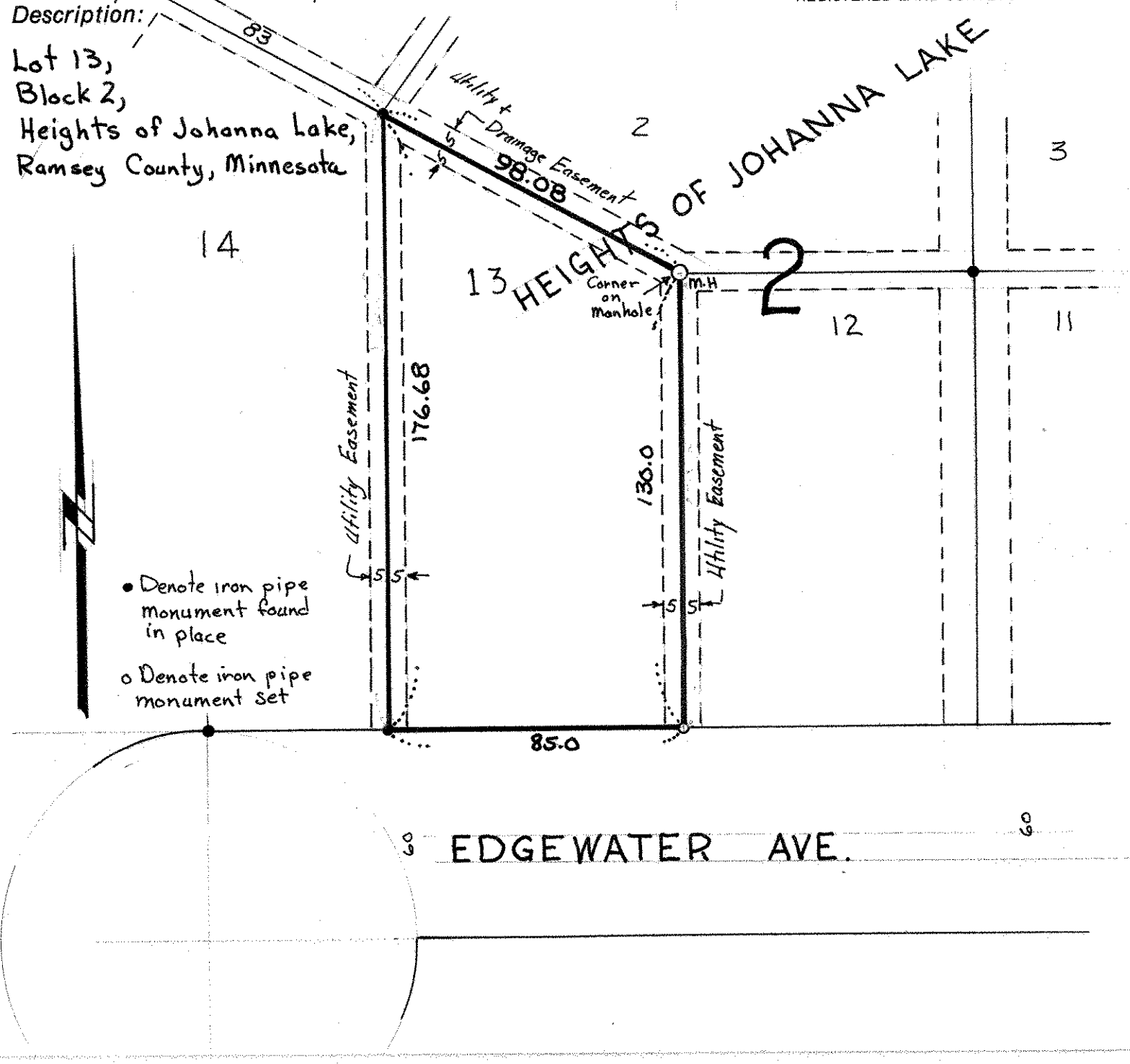
Surveyed For Edward Knight

Date April 10, 1980

Scale 1" = 40'

By Donald W. Schmidt  
REGISTERED LAND SURVEYOR

Description:  
Lot 13,  
Block 2,  
Heights of Johanna Lake,  
Ramsey County, Minnesota



- Denote iron pipe monument found in place
- Denote iron pipe monument set