

NE 3 29 23

# Certificate of Survey

From the office of  
**GEORGI-SCHMIDT & ASSOC. INC.**  
3092 No. Lexington Ave., Roseville, Mn. 55113  
LAND SURVEYING  
483-4408

I Hereby Certify that this plat shows a survey made by me of the [unclear] described on this plat, and that the corners are correctly placed as shown and that all locations have been correctly shown.

Job Number: 347

Surveyed For Belair Contractors

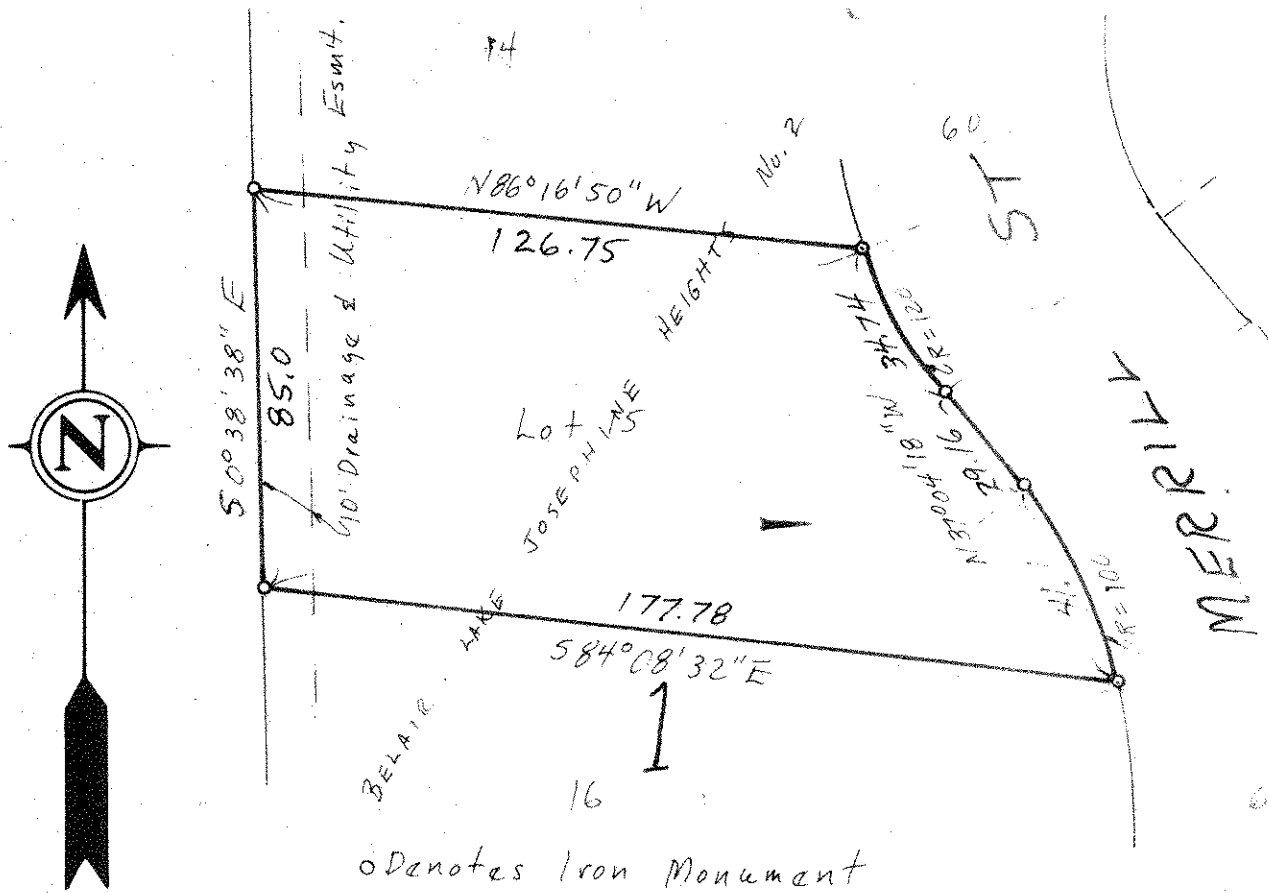
Date May 1979

Scale 1" = 40'

By Wald W. Schmeider  
REGISTERED LAND SURVEYOR

Description:

Lot 15, Block 1, Belair Lake Josephine Heights No. 2  
Ramsey County, Minnesota



o Denotes Iron Monument