

NE 3 29 23

Certificate
of Survey

From the office of
GEORGI-SCHMIDT & ASSOC. INC.

3092 No. Lexington Ave., Roseville, Mn. 55113

LAND SURVEYING

483-4408

I Hereby Certify that this plat shows a survey made by me of the property described on this plat, and that the corners are correctly placed as shown, and that all locations have been correctly shown.

Job Number: 334

Surveyed For Belair Contractors

Date 4/30/79

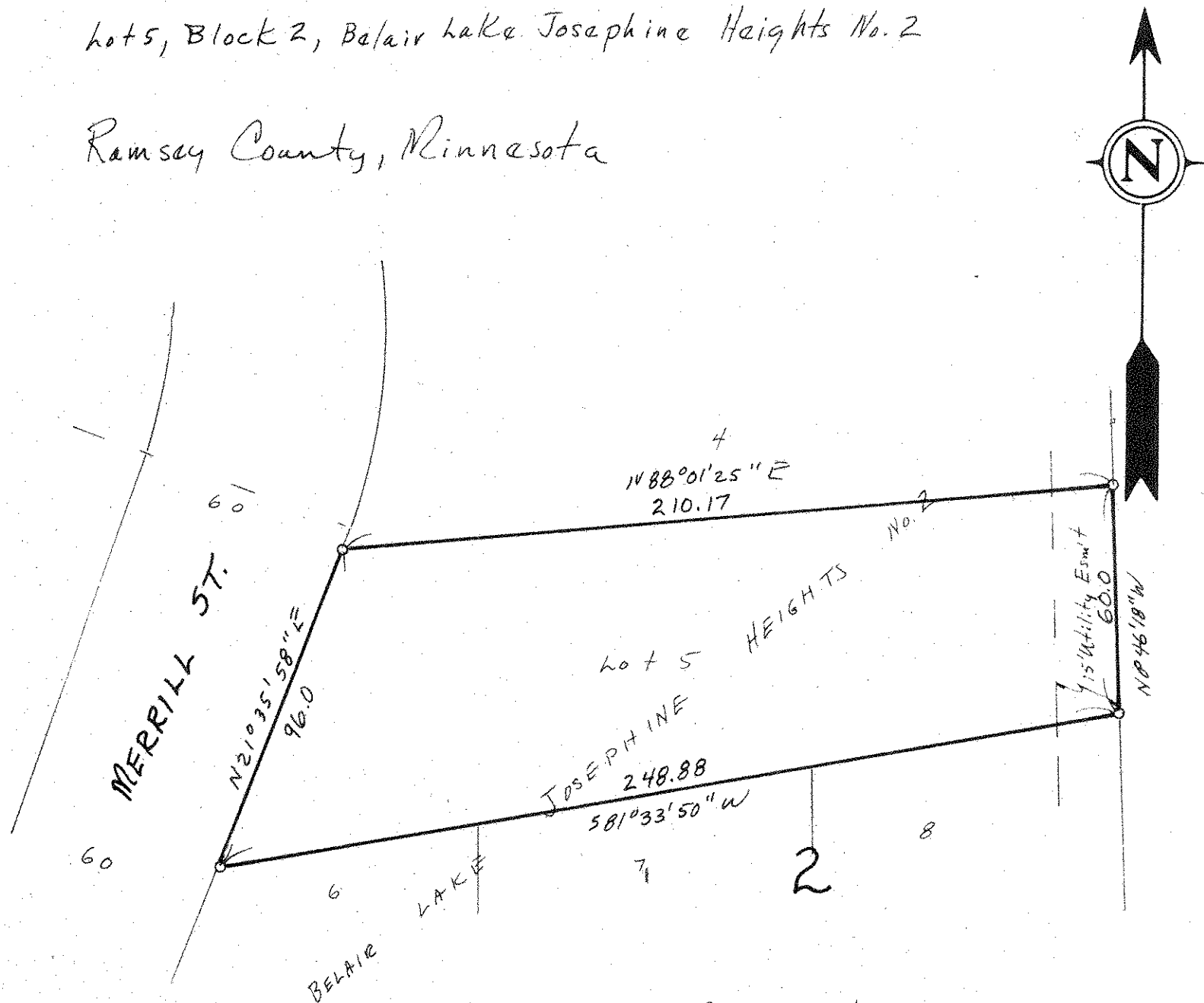
Scale 1"=40'

By Ronald W. Schmidt
REGISTERED LAND SURVEYOR

Description:

lots 5, Block 2, Belair Lake Josephine Heights No. 2

Ramsey County, Minnesota



o Denotes Iron Monument