

Certificate of Survey

From the office of
GEORGI-SCHMIDT & ASSOC. INC.
3092 No. Lexington Ave., Roseville, Mn. 55113
LAND SURVEYING
483-4408

I Hereby Certify that this plat shows a survey made by me of the property described on this plat, and that the corners are correctly placed as shown, and that all locations have been correctly shown.

Job Number: 415

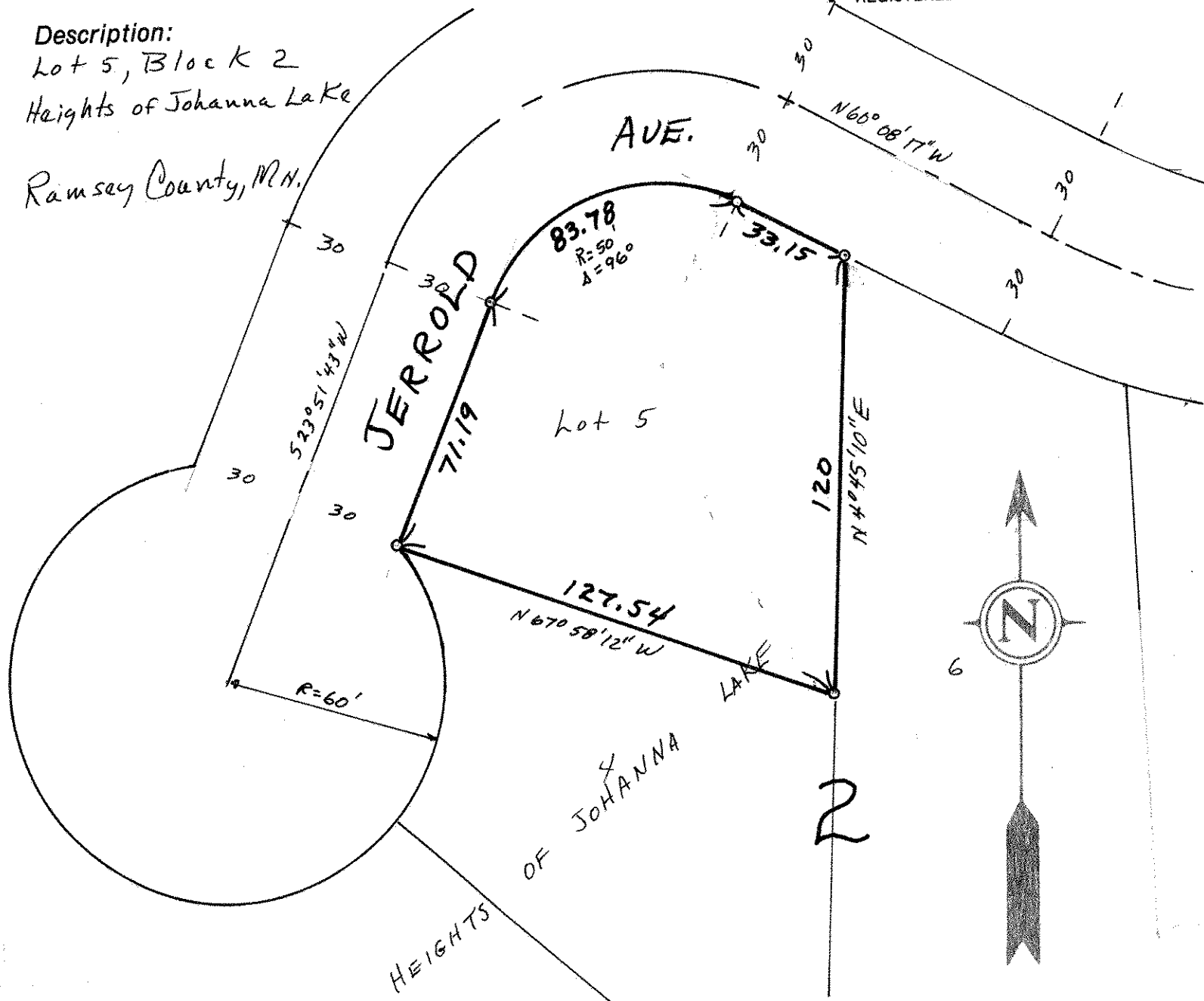
Surveyed For Berry O'meara

Date July 1979

Scale 1"=40'

BY Donald W. Schmidt
REGISTERED LAND SURVEYOR

Description:
Lot 5, Block 2
Heights of Johanna Lake
Ramsey County, MN.



o Denotes Iron Monument