

**Certificate  
of Survey**

From the office of  
**GEORGI-SCHMIDT & ASSOC. INC.**  
3092 No. Lexington Ave., Roseville, Mn. 55113  
LAND SURVEYING  
483-4408

I Hereby Certify that this plat shows a survey made by me of the property described on this plat, and that the corners are correctly placed as shown, and that all locations have been correctly shown.

Job Number: 415

Surveyed For Barry Omeara

Date July 1979

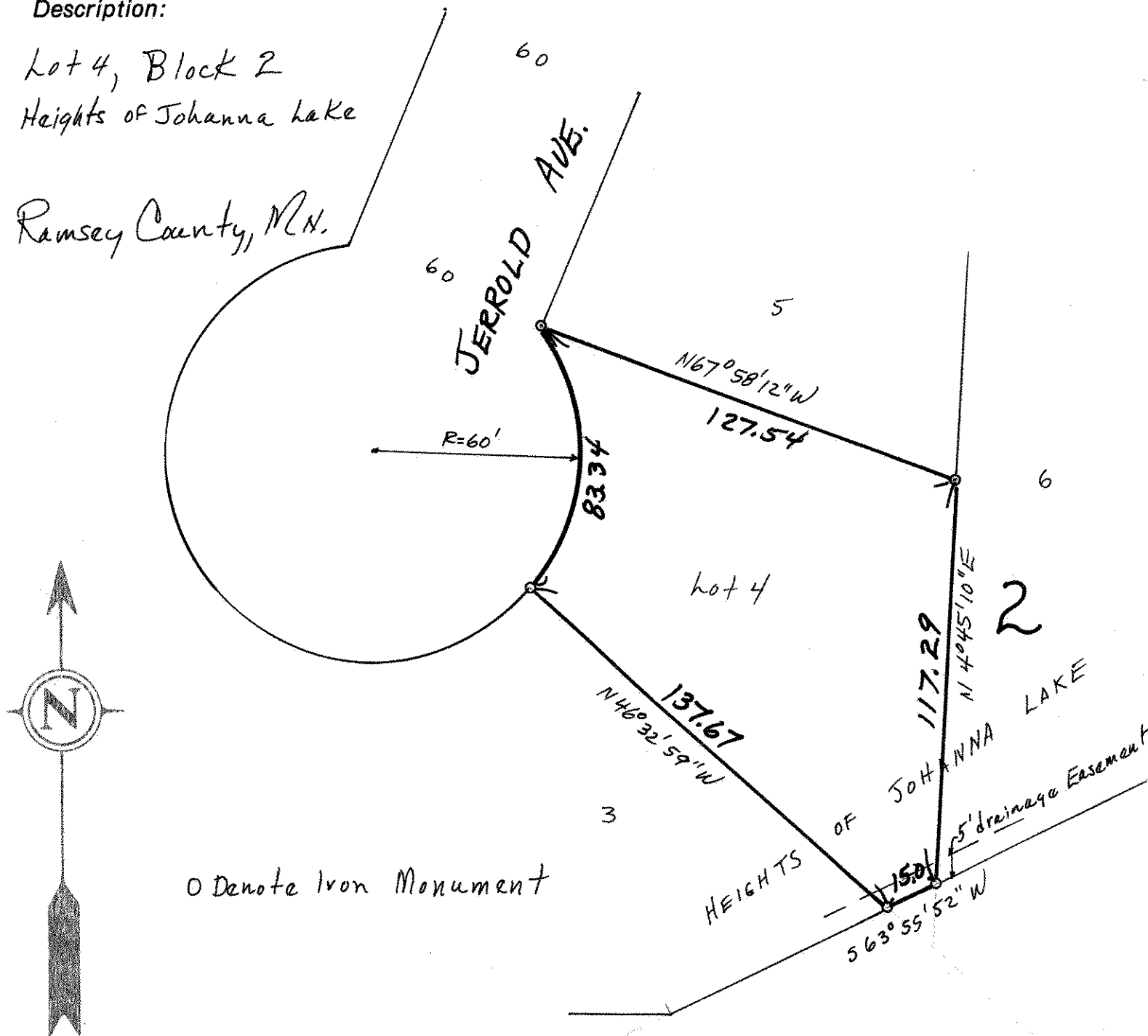
Scale 1"=40'

By Donald W. Schmidt  
REGISTERED LAND SURVEYOR

**Description:**

Lot 4, Block 2  
Heights of Johanna Lake

Ramsey County, MN.



o Denote Iron Monument