

NW 23 30 23

# Certificate of Survey

From the office of  
**GEORGI-SCHMIDT & ASSOC. INC.**  
3092 No. Lexington Ave., Roseville, Mn. 55113  
LAND SURVEYING  
483-4408

I Hereby Certify that this plat shows a survey made by me of the property described on this plat, and that the corners are correctly placed as shown, and that all locations have been correctly shown.

Job Number: 250

Surveyed For Grag Sowieja - Living Unlimited

Date 2/14/79

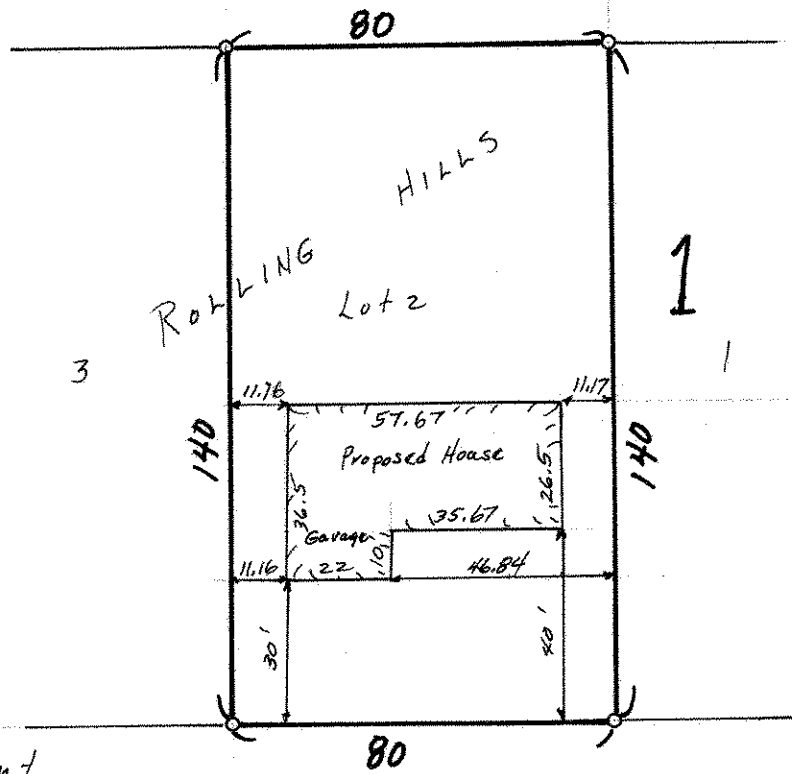
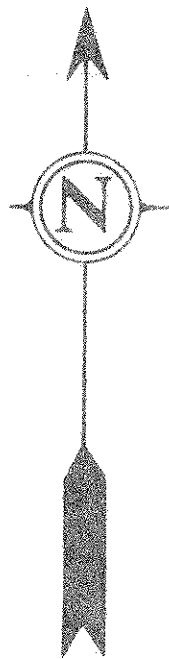
Scale 1" = 40'

By Donald W Schmidt  
REGISTERED LAND SURVEYOR

### Description:

Lot 2, Block 1, Rolling Hills

Ramsey County, Minnesota



○ denotes Iron Monument

43 VICTORIA ST. 43

South line of NW 1/4 Section 23, T30N, R23W