

FROM THE OFFICE OF

CHARLES O. GEORGI COMPANY

2215 West County Road B

Saint Paul, Minnesota 55113

REGISTERED CIVIL ENGINEER AND LAND SURVEYOR



**Certificate
of Survey**

I Hereby Certify that this plat shows a survey made by me of the property described on this plat, and that the corners are correctly placed as shown, and that all locations have been correctly shown.

Surveyed For Steven Ohmann

Date June 1978

Scale 1" = 40'

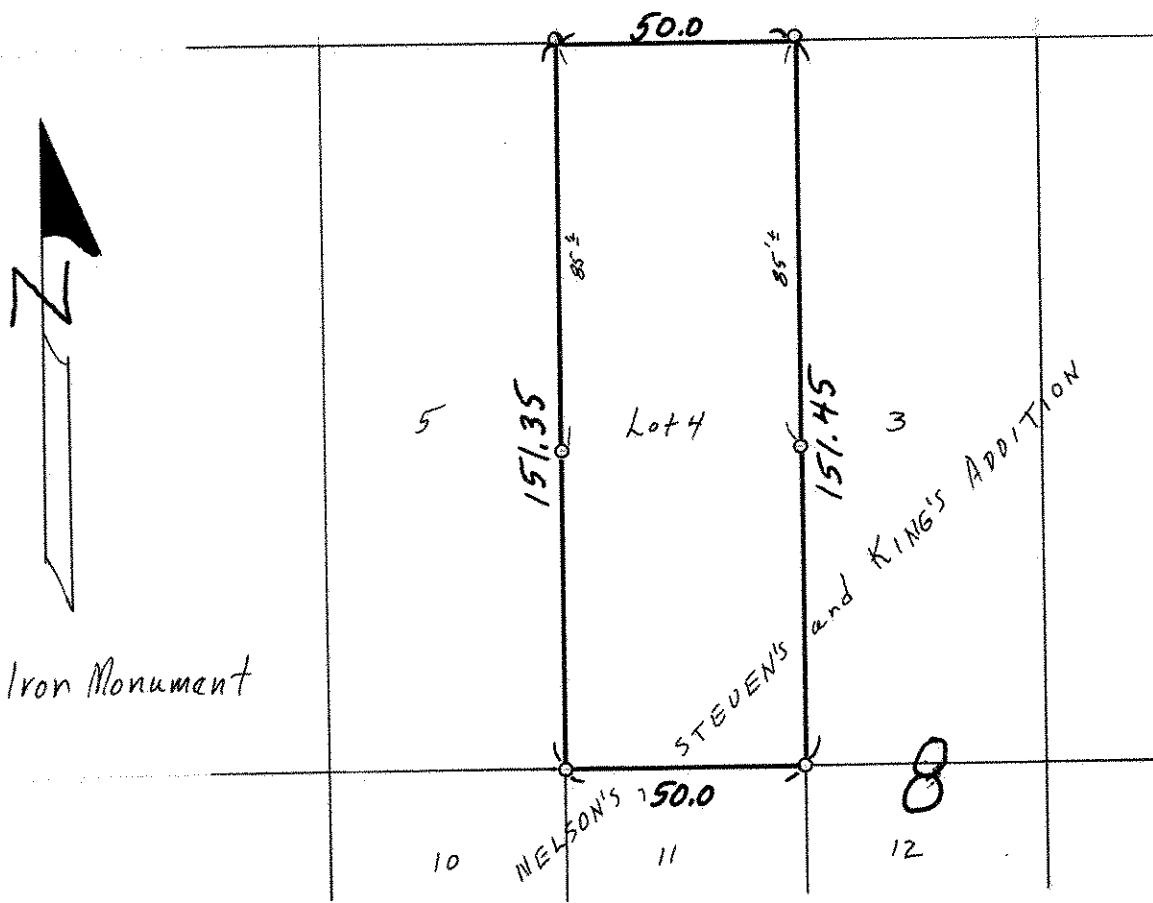
By Donald W. Schmidt
REGISTERED LAND SURVEYOR

Description:

Lot 4, Block 8
Nelson's, Steven's, and King's Addition
To West St. Paul

Ramsey County, Minnesota

60 W. STEVEN'S ST. 60



O Denotes Iron Monument