

# Certificate of Survey

From the office of  
**GEORGI-SCHMIDT & ASSOC. INC.**  
 3092 No. Lexington Ave., Roseville, Mn. 55113  
 LAND SURVEYING  
 483-4408

I Hereby Certify that this plat shows a survey made by me of the property described on this plat, ~~and that the corners are correctly placed as shown,~~ and that all locations have been correctly shown.

Job Number: 44

Surveyed For Port Authority

Date July 3 1978

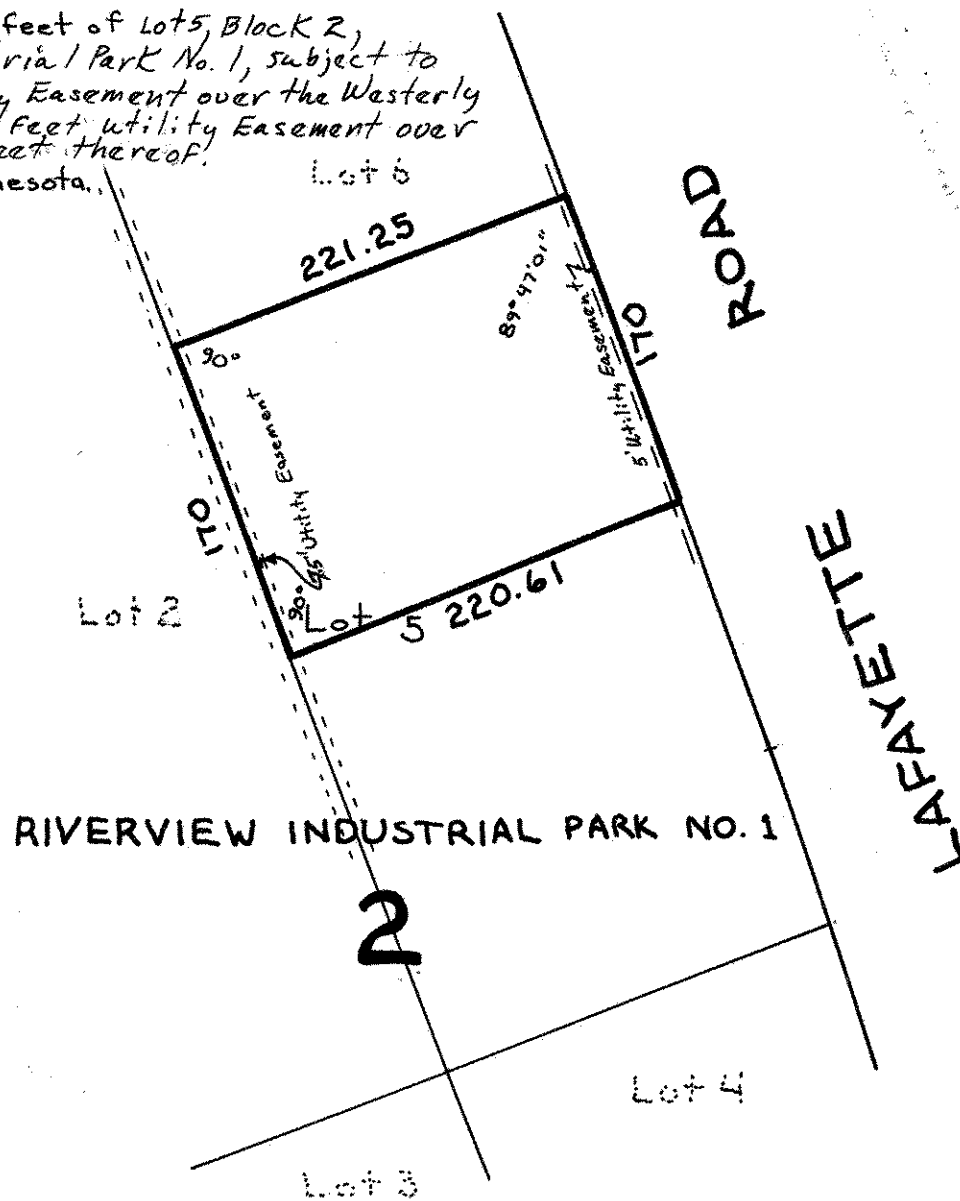
Scale 1" = 100'

By Donald W Schmidt  
 REGISTERED LAND SURVEYOR

Contains 37,558 Sq Ft., m.o.l.

### Description:

The Northerly 170 feet of Lot 5, Block 2, RiverView Industrial Park No. 1, subject to a 7.5 Foot Utility Easement over the Westerly 7.5 Feet and a 5.0 Foot Utility Easement over the Easterly 50 Feet thereof, Ramsey County, Minnesota.



No corners placed.