

Certificate of Survey

From the office of
GEORGI-SCHMIDT & ASSOC. INC.
3092 No. Lexington Ave., Roseville, Mn. 55113
LAND SURVEYING
483-4408

I Hereby Certify that this plat shows a survey made by me of the property described on this plat, and that the corners are correctly placed as shown, and that all locations have been correctly shown.

Job Number: 145

Surveyed For Hughes Const.

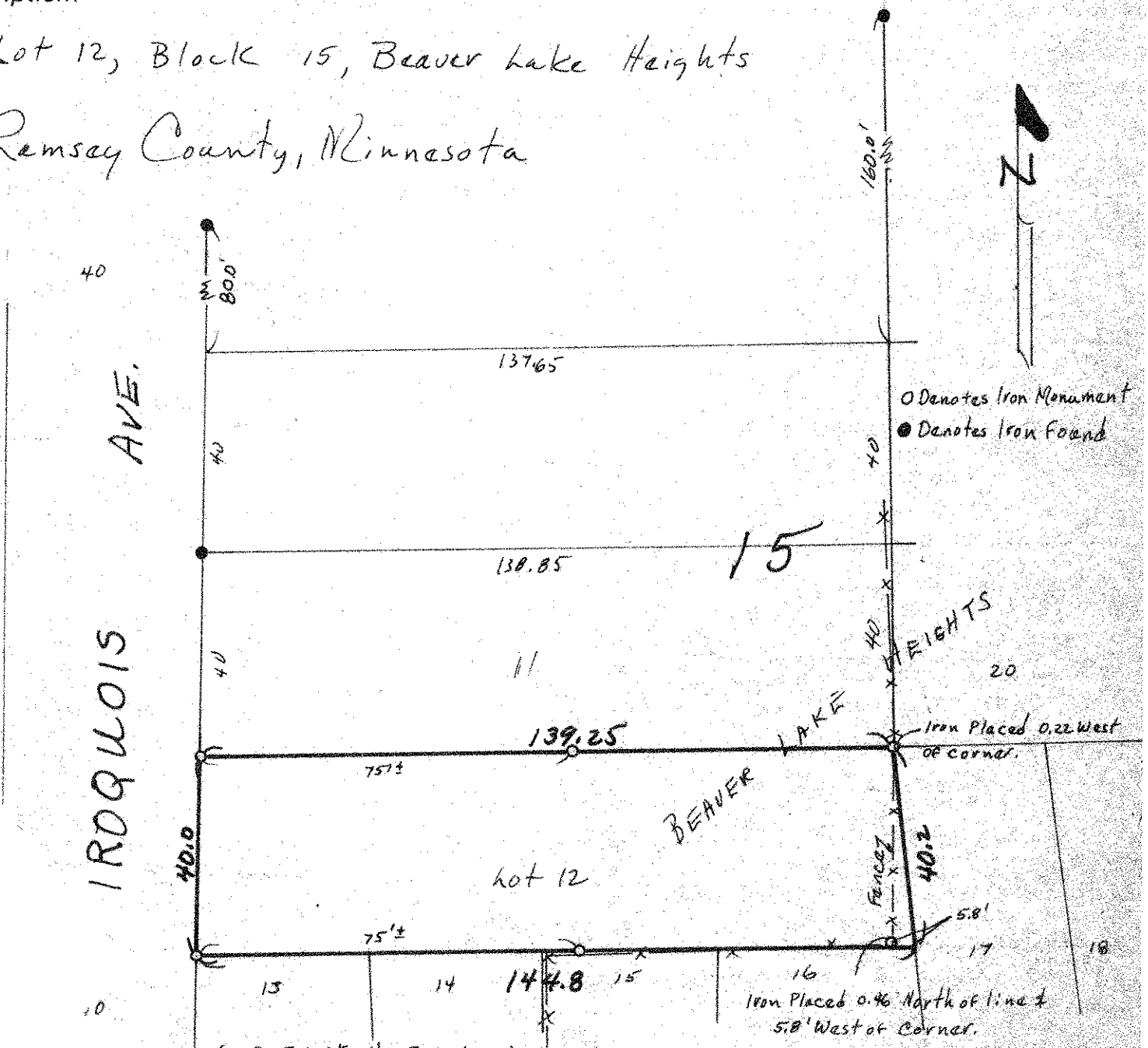
Date October 1978

Scale 1" = 30'

By Donald W Schmidt
REGISTERED LAND SURVEYOR

Description:

Lot 12, Block 15, Beaver Lake Heights
Ramsay County, Minnesota



SURVEYOR'S NOTE: Used Record Plat distances from irons to North & Record Plat distances East & West.