

FROM THE OFFICE OF

CHARLES O. GEORGI COMPANY

2215 West County Road B

Saint Paul, Minnesota 55113

REGISTERED CIVIL ENGINEER AND LAND SURVEYOR



I Hereby Certify that this plat shows a survey made by me of the property described on this plat, and that the corners are correctly placed as shown, and that all locations have been correctly shown.

Surveyed For Tom Veesenmeyer

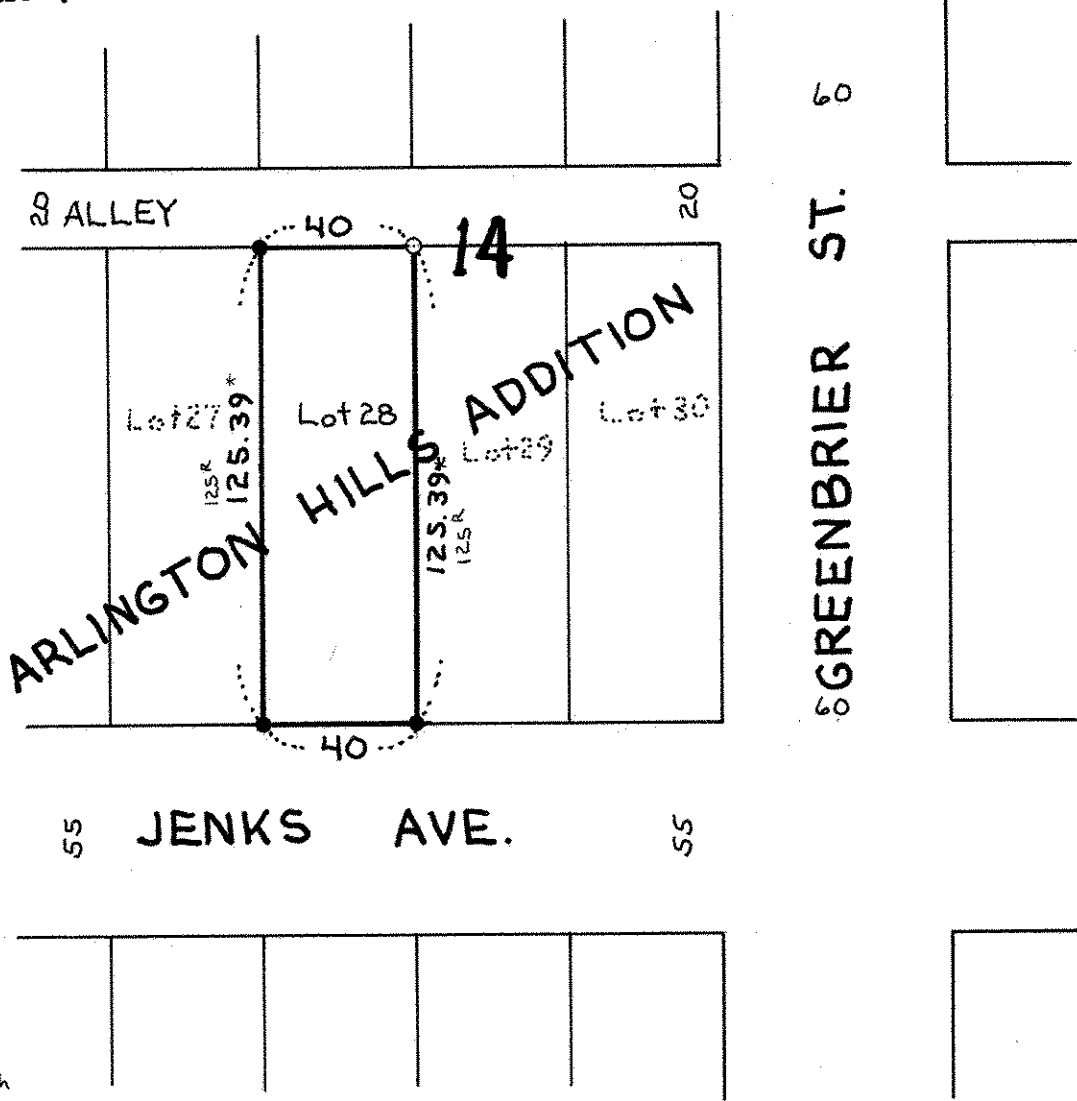
Date February 1978

Scale 1" = 50'

By *Charles O. Georgi*
REGISTERED LAND SURVEYOR

Description:

Lot 28,
Block 14,
Arlington Hills Addition,
Ramsey County, Minnesota



- Denotes Iron Pipe Monument Set
- Denotes Iron Pipe Monument Found in Place
- * Excess in block North & South was prorated equally