

FROM THE OFFICE OF

CHARLES O. GEORGI COMPANY

2215 West County Road B

Saint Paul, Minnesota 55113

REGISTERED CIVIL ENGINEER AND LAND SURVEYOR

Certificate of Survey

I Hereby Certify that this plat shows a survey made by me of the property described on this plat, and that the corners are correctly placed as shown, and that all locations have been correctly shown.

Surveyed For Steve Kraiss

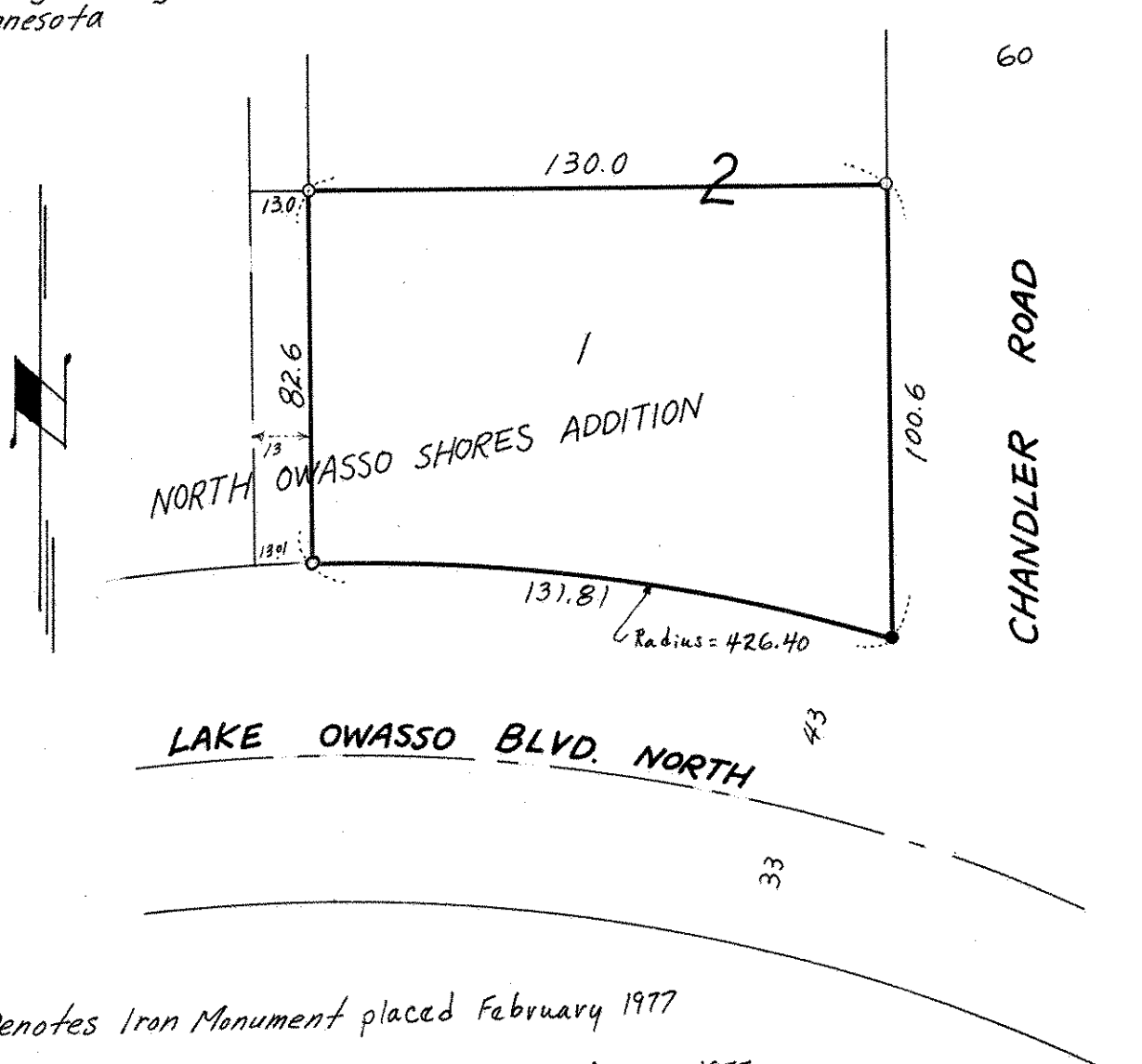
Date Jan. 1978

Scale 1" = 40'

By Charles O. Georgi
REGISTERED LAND SURVEYOR

Description:

Lot 1, Block 2, except
the West 13.0 feet thereof,
North Owasso Shores Addition
Ramsey County,
Minnesota



- Denotes Iron Monument placed February 1977
- Denotes Iron Monument found in place February 1977