

FROM THE OFFICE OF

# CHARLES O. GEORGI COMPANY

2215 West County Road B

Saint Paul, Minnesota 55113

REGISTERED CIVIL ENGINEER AND LAND SURVEYOR

## Certificate of Survey

I Hereby Certify that this plat shows a survey made by me of the property described on this plat, and that the corners are correctly placed as shown, and that all locations have been correctly shown. 1/19/82 Restake

Job # 1097

Surveyed For Ray Kroiss

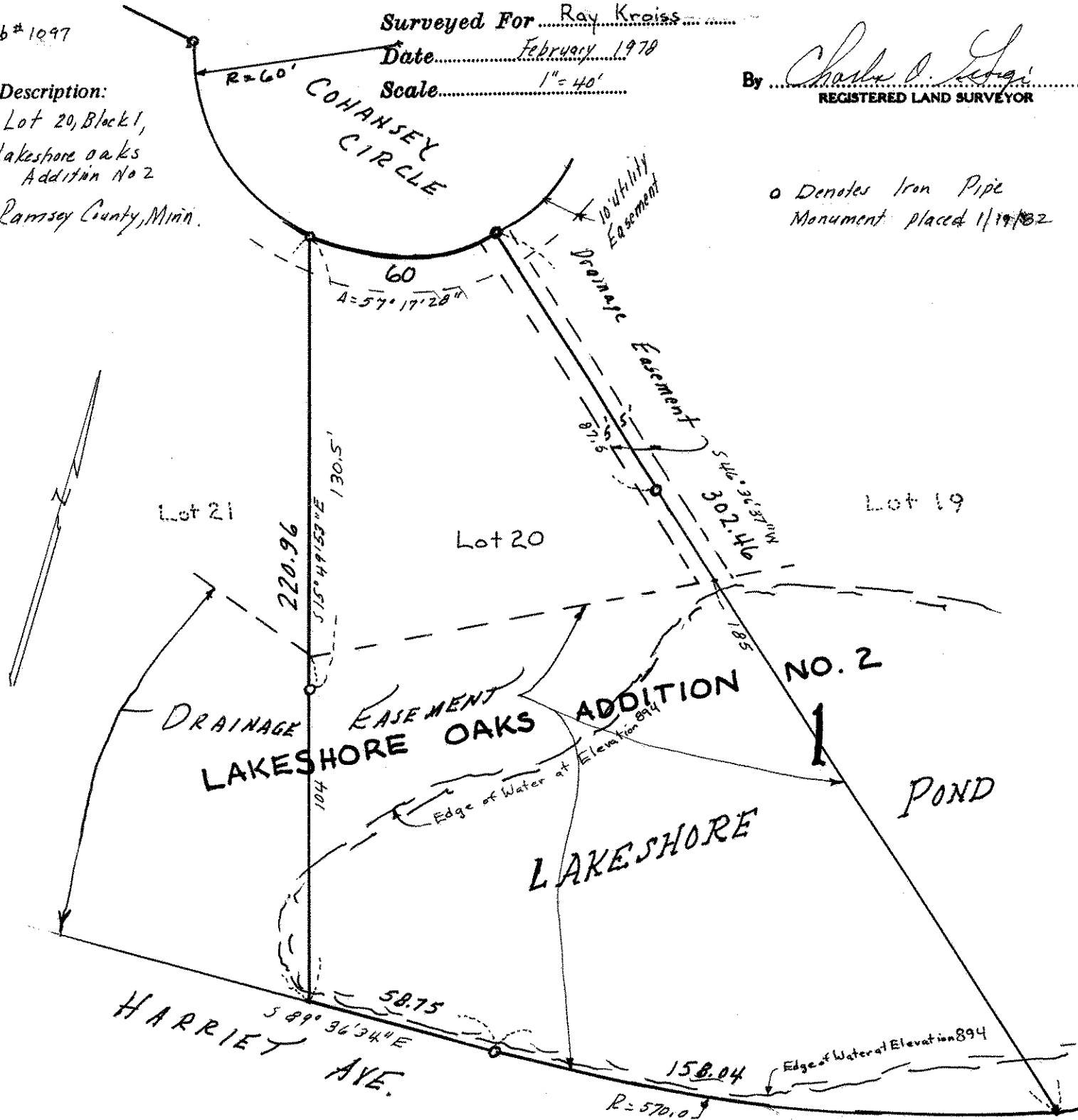
Date February 1978

Scale 1" = 40'

By Charles O. Georgi  
REGISTERED LAND SURVEYOR

**Description:**

Lot 20, Block 1,  
Lakeshore Oaks  
Addition No 2  
Ramsey County, Minn.



o Denotes Iron Pipe Monument placed 1/19/82