

FROM THE OFFICE OF

CHARLES O. GEORGI COMPANY

2215 West County Road B

Saint Paul, Minnesota 55113

REGISTERED CIVIL ENGINEER AND LAND SURVEYOR

Certificate of Survey

I Hereby Certify that this plat shows a survey made by me of the property described on this plat, and that the corners are correctly placed as shown, and that all locations have been correctly shown.

Surveyed For *Sh-Ho. Bldgs.*

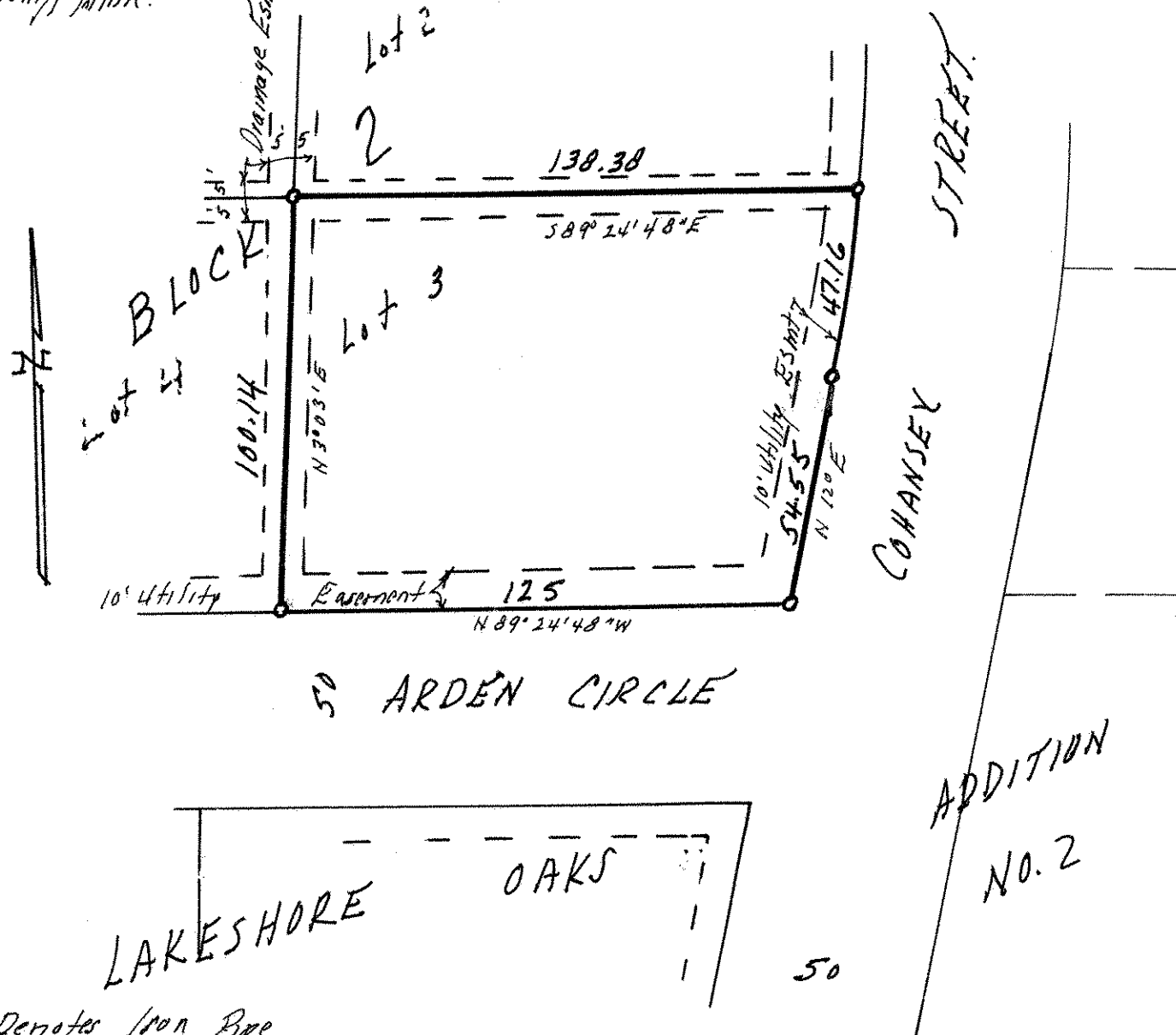
Date *April 1978*

Scale *1"=40'*

By *Charles O. Georgi*
REGISTERED LAND SURVEYOR

Description:

*Lot 3, Block 2
Lakeshore Oaks Addition No. 2
Ramsey County, Minn.*



• Denotes Iron Pipe Monument placed 7/77