

FROM THE OFFICE OF

CHARLES O. GEORGI COMPANY

2215 West County Road B

Saint Paul, Minnesota 55113

REGISTERED CIVIL ENGINEER AND LAND SURVEYOR

Certificate of Survey

I Herby Certify that this plat shows a survey made by me of the property described on this plat, and that the corners are correctly placed as shown, and that all locations have been correctly shown.

6/8/77 Added area C.O.G.
7/21/77 Added Building location C.O.G.

Surveyed For Micro Components Technology

Date May 1977

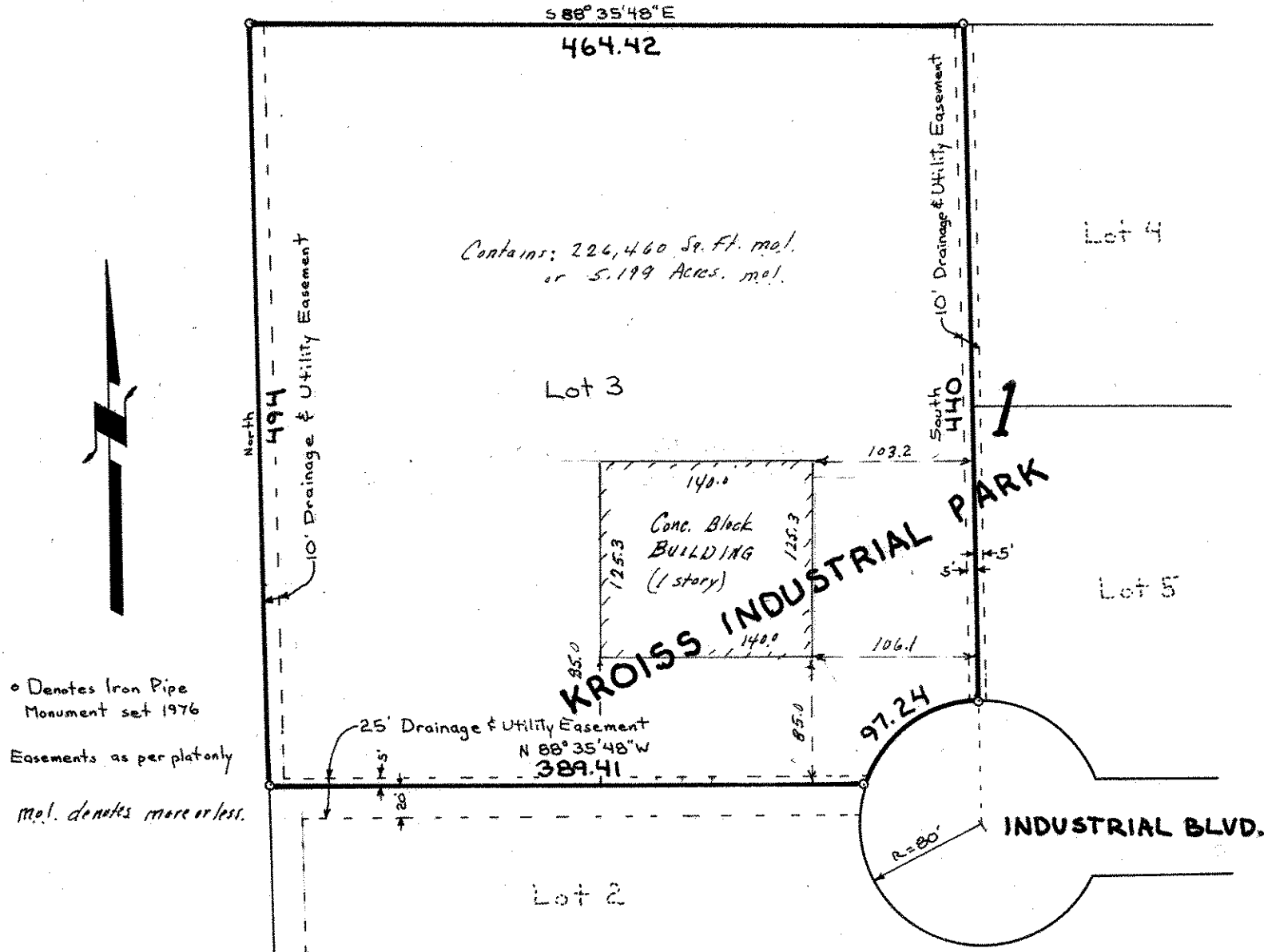
Scale 1" = 100'

By *Charles O. Georgi*
REGISTERED LAND SURVEYOR

Description:

Lot 3,
Block 1,
Kroiss Industrial Park,
Ramsey County, Minn.

SOO LINE RAILWAY



o Denotes Iron Pipe Monument set 1976
Easements as per plat only
mol. denotes more or less.