

FROM THE OFFICE OF

**CHARLES O. GEORGI COMPANY**

2215 West County Road B

Saint Paul, Minnesota 55113

REGISTERED CIVIL ENGINEER AND LAND SURVEYOR

**Certificate  
of Survey**

**I Heroby Certify that this plat shows a survey made by me of the property described on this plat, and that the corners are correctly placed as shown, and that all locations have been correctly shown.**

No corners placed - Building over line or clear as shown.

**Surveyed For** Minnesota Building Properties, Inc.

**Date** March 1977

**Scale** 1" = 40'

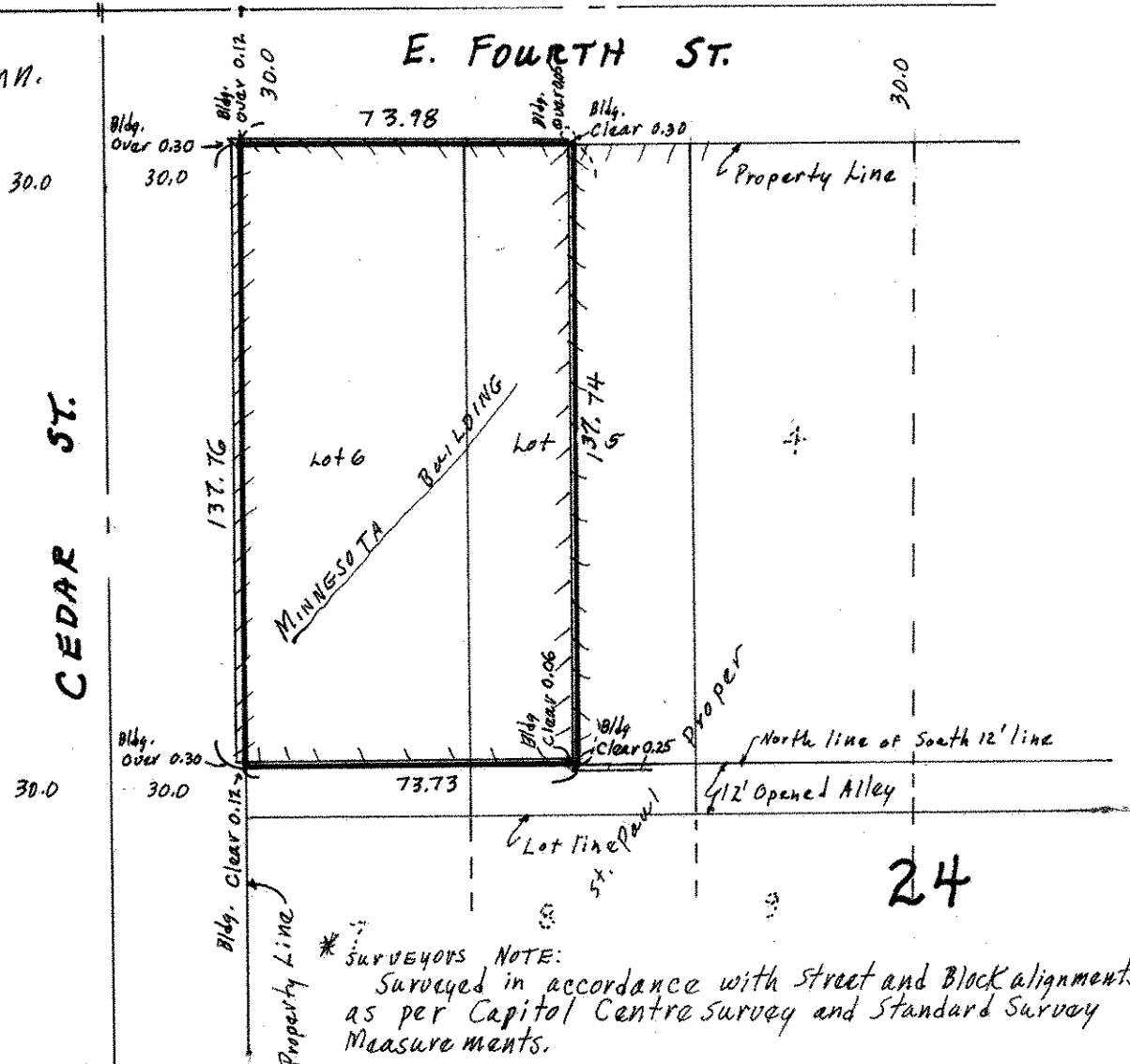
By *Donald W. Schmidt*  
REGISTERED LAND SURVEYOR

Contains 10,173 Sq. Ft., M.O.L.

**Description:** (as furnished)

All that part of Lots 5 and 6, Block 24, St. Paul Proper, particularly described as follows:  
Beginning at the NW<sup>1</sup>/<sub>4</sub> corner of said Lot 6 and running thence in a NE<sup>1</sup>/<sub>4</sub> direction along the SE<sup>1</sup>/<sub>4</sub> (sometimes referred to as the SW<sup>1</sup>/<sub>4</sub> or Southerly) line of Fourth St. in the City of St. Paul, Minnesota, a distance of 73.98 Feet to a point; thence in a SE<sup>1</sup>/<sub>4</sub> direction in a straight line 137.74 Feet, more or less, to a point on the NW<sup>1</sup>/<sub>4</sub> line of the Southerly or SE<sup>1</sup>/<sub>4</sub> 12 Feet of said Lots 5 and 6, which said point is 73.73 Feet NE<sup>1</sup>/<sub>4</sub> from the NW<sup>1</sup>/<sub>4</sub> corner of said Southerly or SE<sup>1</sup>/<sub>4</sub> 12 Feet of said Lots 5 and 6; thence SW<sup>1</sup>/<sub>4</sub> along the NW<sup>1</sup>/<sub>4</sub> line of said Southerly or SE<sup>1</sup>/<sub>4</sub> 12 Feet of said Lots 5 and 6, 73.73 Feet to a point on the Easterly line of Cedar St. in St. Paul, Minnesota; thence in a NW<sup>1</sup>/<sub>4</sub> direction along the Easterly line of Cedar St., 137.76 Feet, more or less, to the point of beginning.

Ramsay County, Minn.



\* SURVEYORS NOTE:  
Surveyed in accordance with street and Block alignments  
as per Capitol Centre survey and Standard Survey  
Measurements.