

FROM THE OFFICE OF

CHARLES O. GEORGI COMPANY

2215 West County Road B

Saint Paul, Minnesota 55113

REGISTERED CIVIL ENGINEER AND LAND SURVEYOR

**Certificate
of Survey**

I Heroby Certify that this plat shows a survey made by me of the property described on this plat, and that the corners are correctly placed as shown, and that all locations have been correctly shown.

CD District No 8
Parcel No. 106-F
Area 6,743 sq. ft. m.o.l.

Surveyed For *Housing Authority*

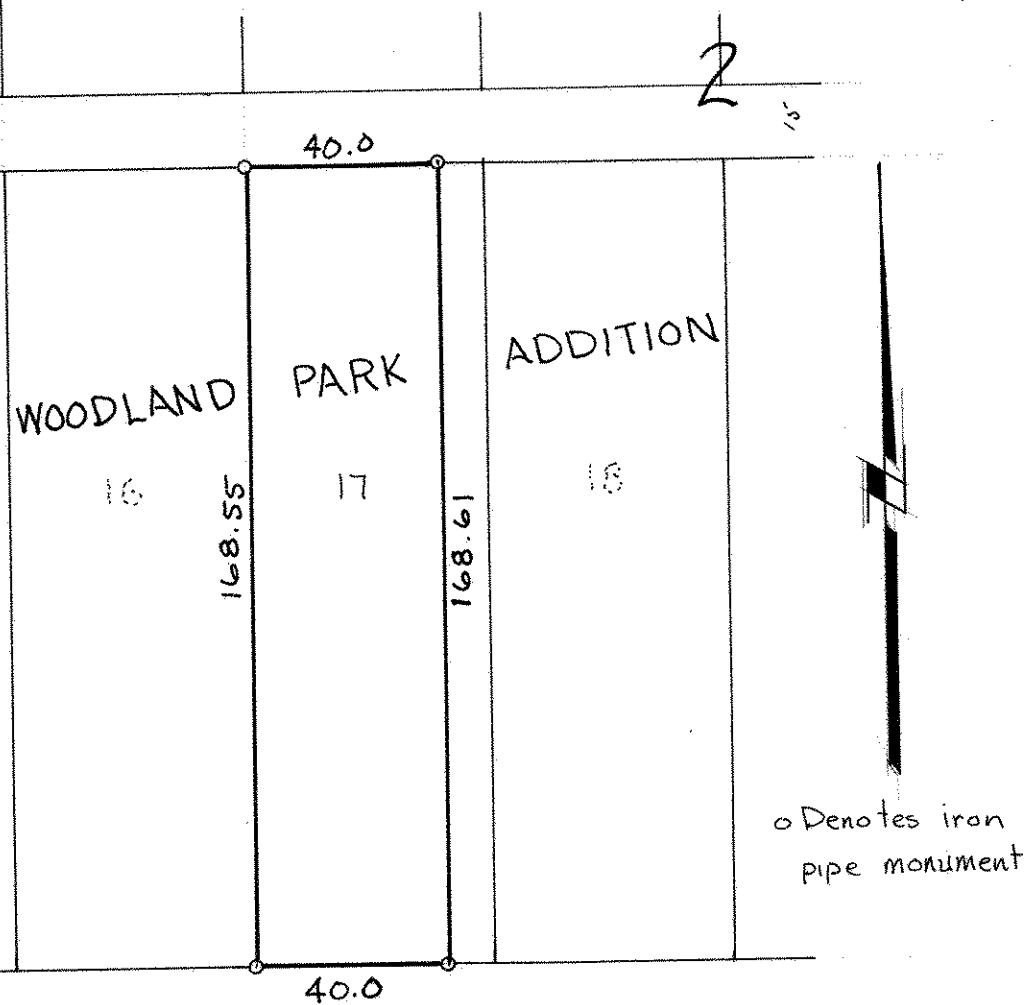
Date *July 1977*

Scale *1" = 40'*

By *Charles O. Georgi*
REGISTERED LAND SURVEYOR

Description:

The West 40.0 feet of
Lot 17, Block 2,
Woodland Park Addition
Ramsey County, Minnesota.



DAYTON AVE.