

5EB 2922

FROM THE OFFICE OF

CHARLES O. GEORGI COMPANY

2215 West County Road B

Saint Paul, Minnesota 55113

REGISTERED CIVIL ENGINEER AND LAND SURVEYOR

Certificate of Survey

I Heroby Certify that this plat shows a survey made by me of the property described on this plat, and that the corners are correctly placed as shown, and that all locations have been correctly shown.

Surveyed For Lawrence Husak

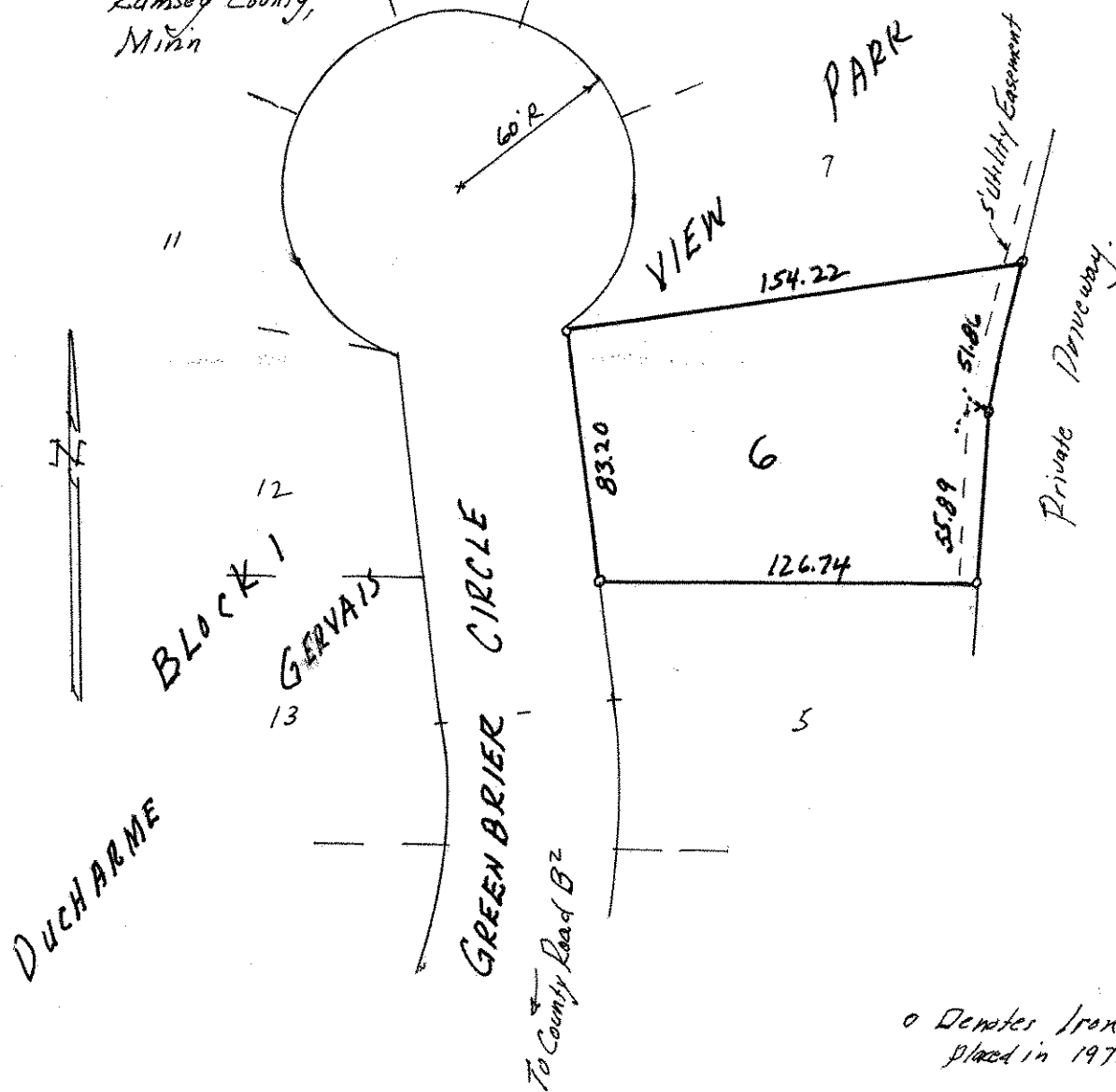
Date July 1977

Scale 1" = 60'

By Charles O. Georgi
REGISTERED LAND SURVEYOR

Description:

Lot 6, Block 1
Ducharme Gervais View Park.
Ramsey County,
Minn



0 Denotes Iron Pipe Monument
placed in 1976