

FROM THE OFFICE OF

# CHARLES O. GEORGI COMPANY

2215 West County Road B

Saint Paul, Minnesota 55113

REGISTERED CIVIL ENGINEER AND LAND SURVEYOR



*I Hereby Certify that this plat shows a survey made by me of the property described on this plat, and that the corners are correctly placed as shown, and that all locations have been correctly shown.*

Surveyed For *Peter E. Fooshe Jr.*

Date *September 1977*

Scale *1"=30'*

By *Charles O. Georgi*  
REGISTERED LAND SURVEYOR

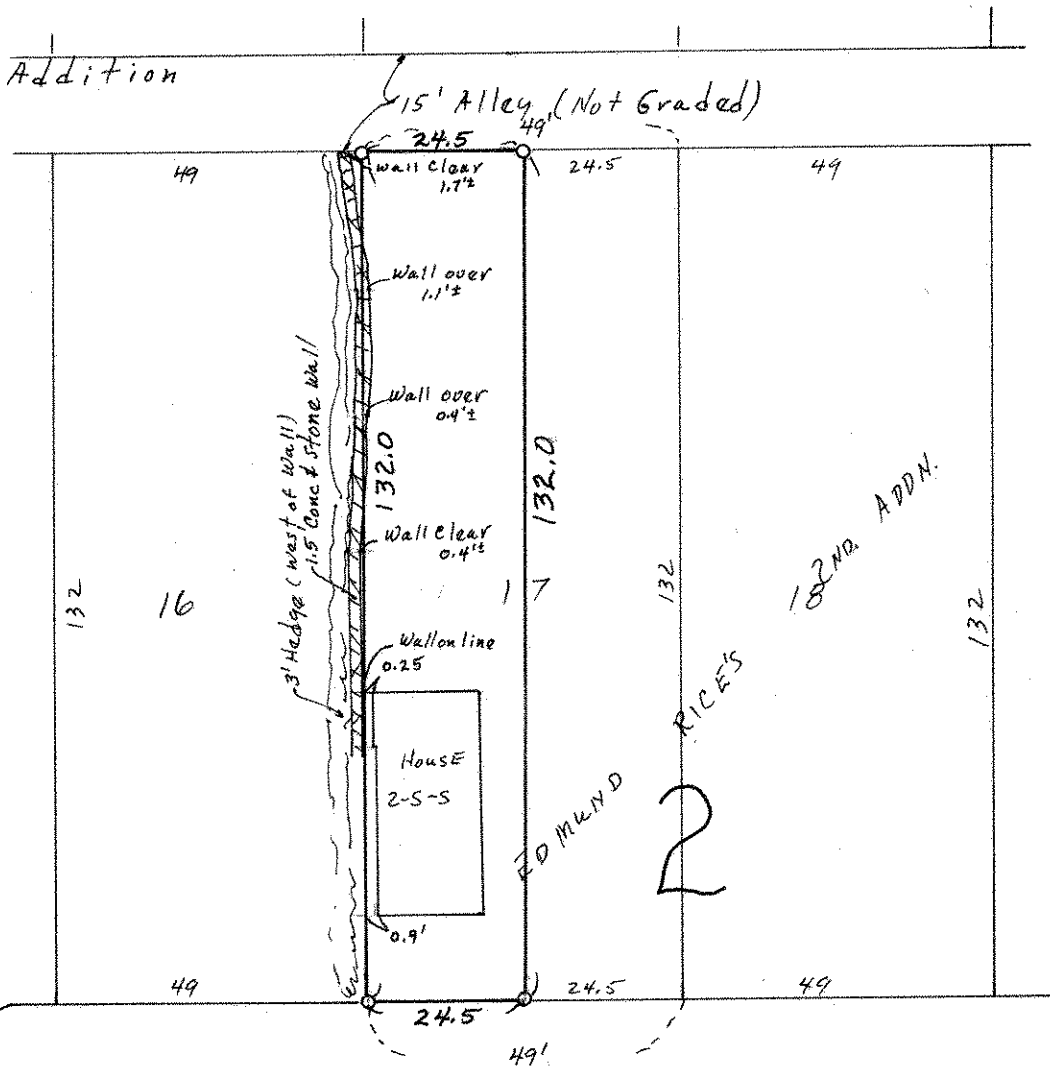
**Description:**

The West 1/2 of Lot 17,  
Block 2, Edmund Rice's 2nd  
Addition  
To the City of St. Paul.

Ramsey County, Minn.



o Denotes Iron Monument



GRANITE ST.

60

60