

FROM THE OFFICE OF

**CHARLES O. GEORGI COMPANY**

2215 West County Road B

Saint Paul, Minnesota 55113

REGISTERED CIVIL ENGINEER AND LAND SURVEYOR

**Certificate  
of Survey**

*I Heroby Certify that this plat shows a survey made by me of the property described on this plat, and that the corners are correctly placed as shown, and that all locations have been correctly shown.*

Surveyed For Dick Carlson

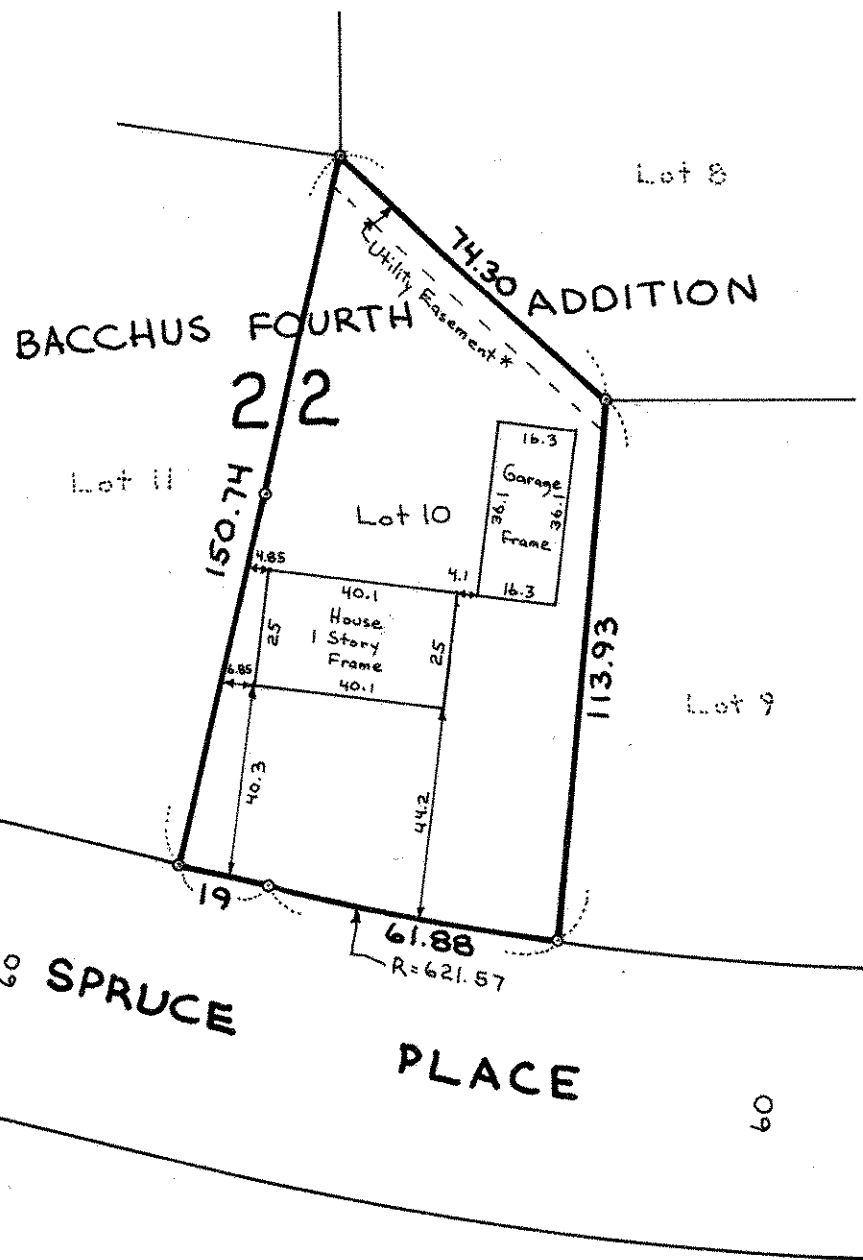
Date May 1977

Scale 1" = 40'

By Charles O. Georgi  
REGISTERED LAND SURVEYOR

**Description:**

Lot 10,  
Block 22,  
Bacchus Fourth Addition,  
Ramsey County, Minn.



- o Denotes Iron Pipe Monument
- Easements are per plat only
- \*Width of easement not shown on plat. Codes required 5' at time.