

FROM THE OFFICE OF

# CHARLES O. GEORGI COMPANY

2215 West County Road B

Saint Paul, Minnesota 55113

REGISTERED CIVIL ENGINEER AND LAND SURVEYOR



*I Heroby Certify that this plat shows a survey made by me of the property described on this plat, and that the corners are correctly placed as shown, and that all locations have been correctly shown.*

Surveyed For *Ray Kroiss*

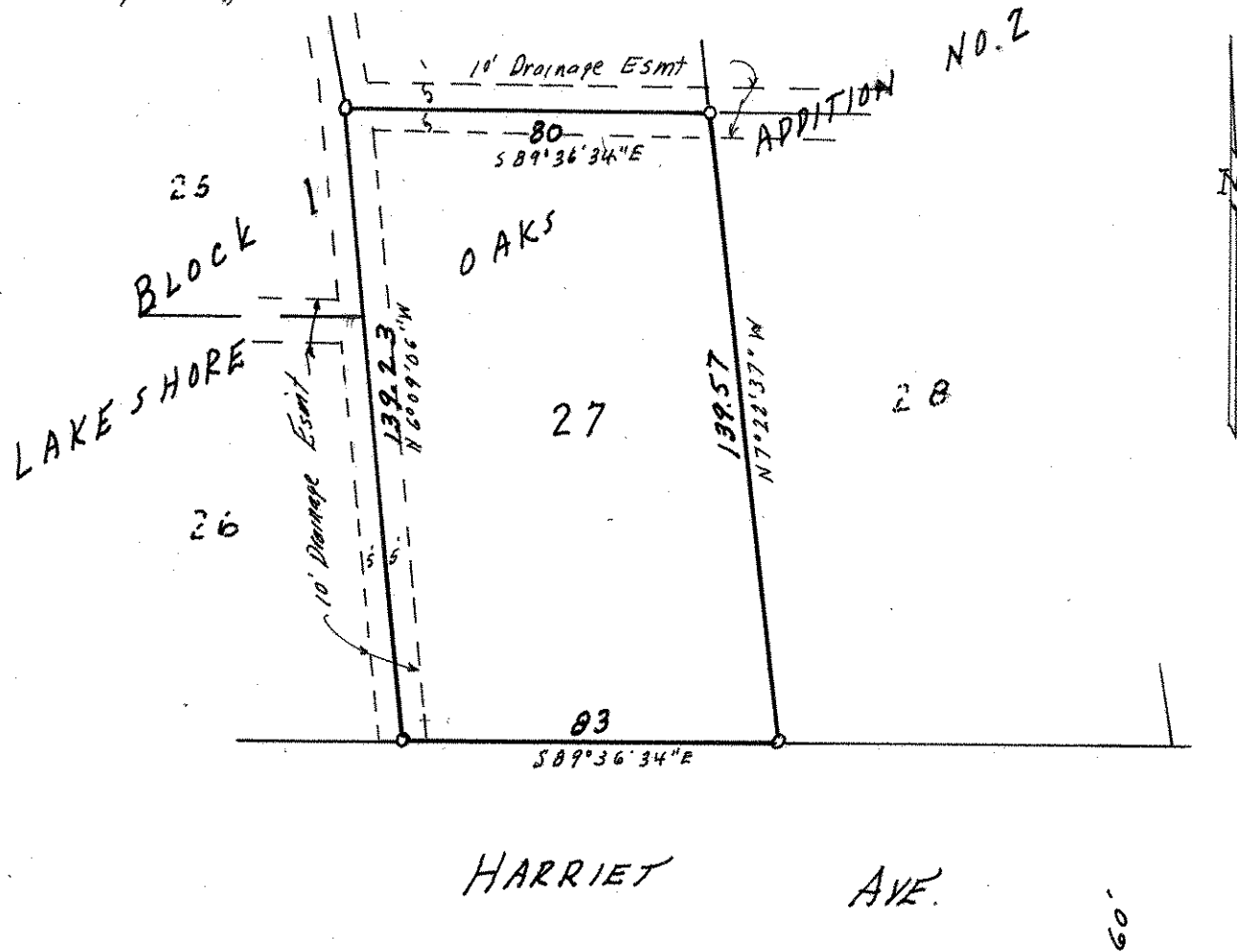
Date *August 1977*

Scale *1" = 40'*

By *Charles O. Georgi*  
REGISTERED LAND SURVEYOR

**Description:**

*Lot 27, Block 1,  
Lakeshore Oaks Addition No. 2  
Ramsey County Minn*



o Denotes Iron Pipe Monument placed 8/77.