


FROM THE OFFICE OF

**CHARLES O. GEORGI COMPANY**

2215 West County Road B

Saint Paul, Minnesota 55113

REGISTERED CIVIL ENGINEER AND LAND SURVEYOR



**Certificate  
of Survey**

*I Hereby Certify that this plat shows a survey made by me of the property described on this plat, and that the corners are correctly placed as shown, and that all locations have been correctly shown.*

Surveyed For.....*Mike Brooks*.....

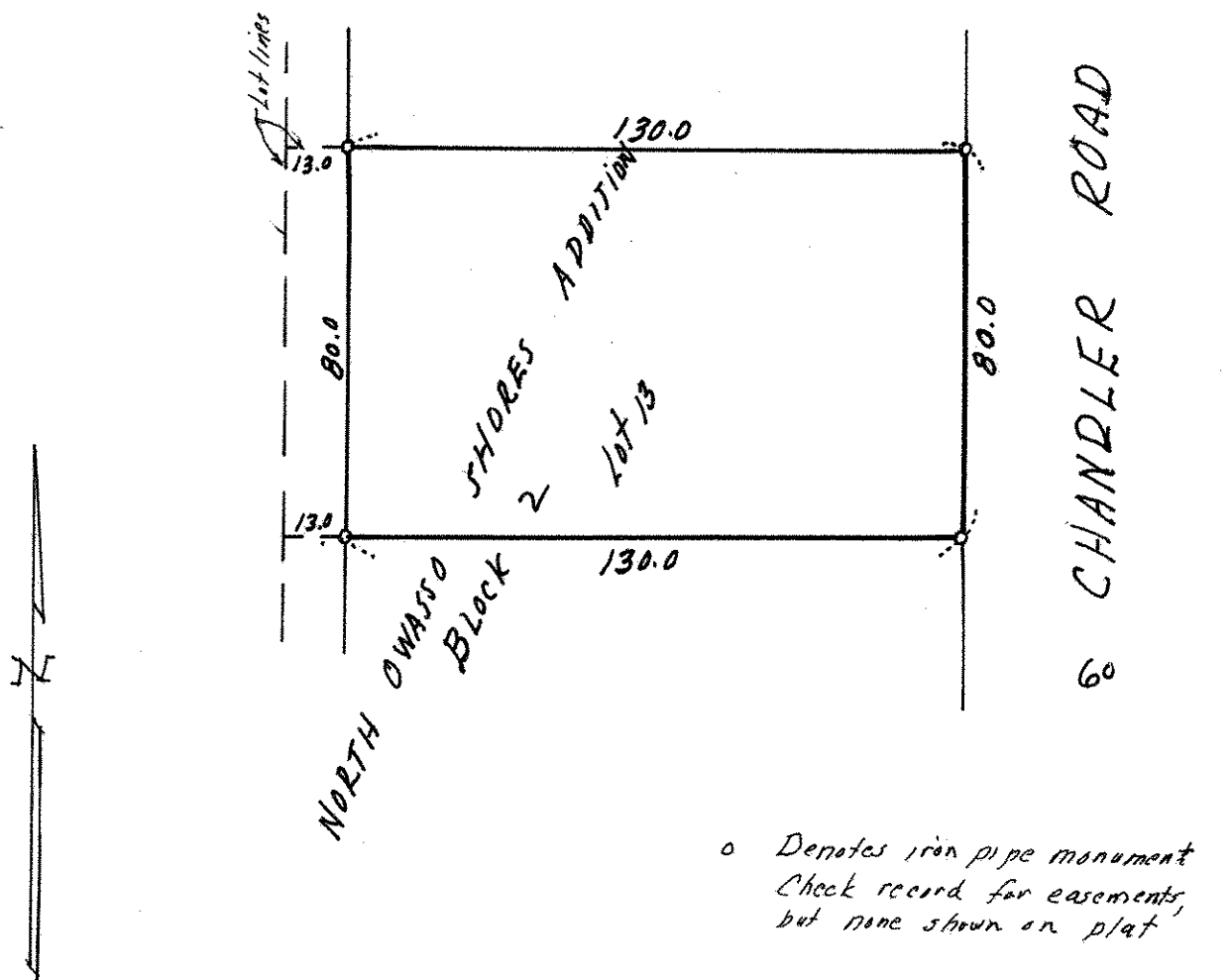
Date.....*Sept 1977*.....

Scale.....*1"=40*.....

By.....*Charles O. Georgi*.....  
REGISTERED LAND SURVEYOR

**Description:**

*Lot 13, except the West 130 feet thereof, Block 2  
North Owasso Shores Addition  
Ramsey County, Minn*



*o Denotes iron pipe monument  
Check record for easements,  
but none shown on plat*