

NW 36 30 23

FROM THE OFFICE OF

# CHARLES O. GEORGI COMPANY

2215 West County Road B

Saint Paul, Minnesota 55113

REGISTERED CIVIL ENGINEER AND LAND SURVEYOR

## Certificate of Survey

I Hereby Certify that this plat shows a survey made by me of the property described on this plat, and that the corners are correctly placed as shown, and that all locations have been correctly shown.

2/6/80 Addl proposed House *W/S*  
Surveyed For *Liking Unlimited, Inc.*

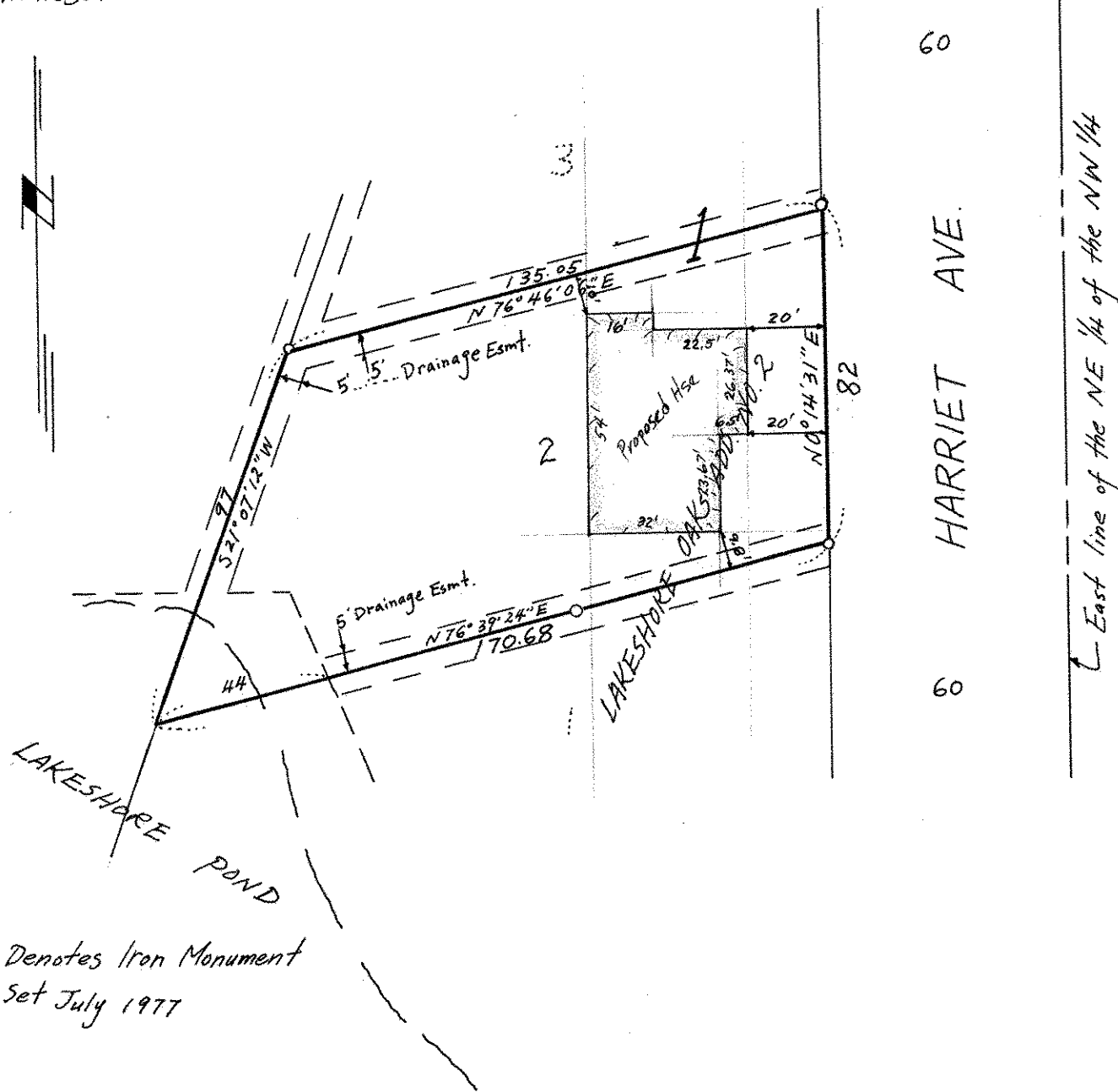
Date *Dec. 1977*

Scale *1" = 40'*

By *Charles O. Georgi*  
REGISTERED LAND SURVEYOR

**Description:**

*Lot 2, Block 1,  
Lakeshore Oaks Addition No. 2,  
Ramsey County,  
Minnesota*



o Denotes Iron Monument  
Set July 1977