

NE 6 28 22

FROM THE OFFICE OF

# CHARLES O. GEORGI COMPANY

2215 West County Road B

Saint Paul, Minnesota 55113

REGISTERED CIVIL ENGINEER AND LAND SURVEYOR

## Certificate of Survey

I Heroby Certify that this plat shows a survey made by me of the property described on this plat, and that the corners are correctly placed as shown, and that all locations have been correctly shown.

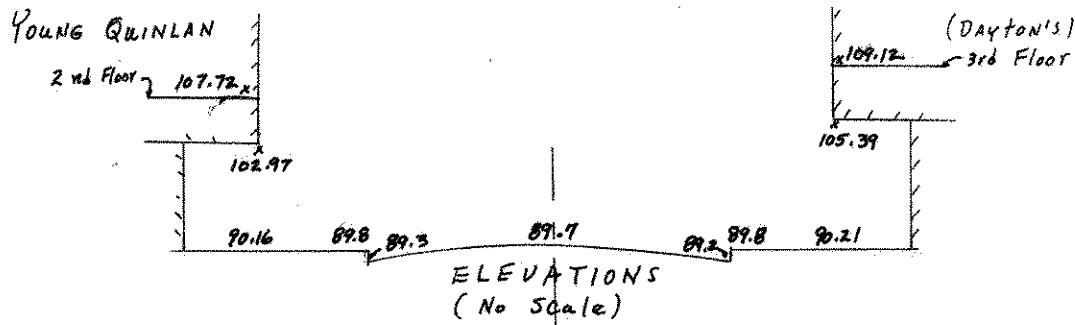
Footbridge between Young Quinlan & Dayton's across Wabasha St.

Surveyed For *Housing Authority*

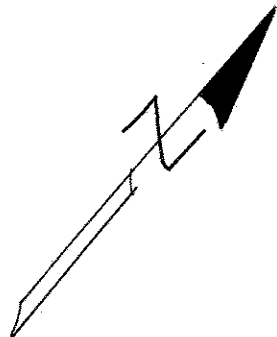
Date *July 1976*

Scale *1" = 20'*

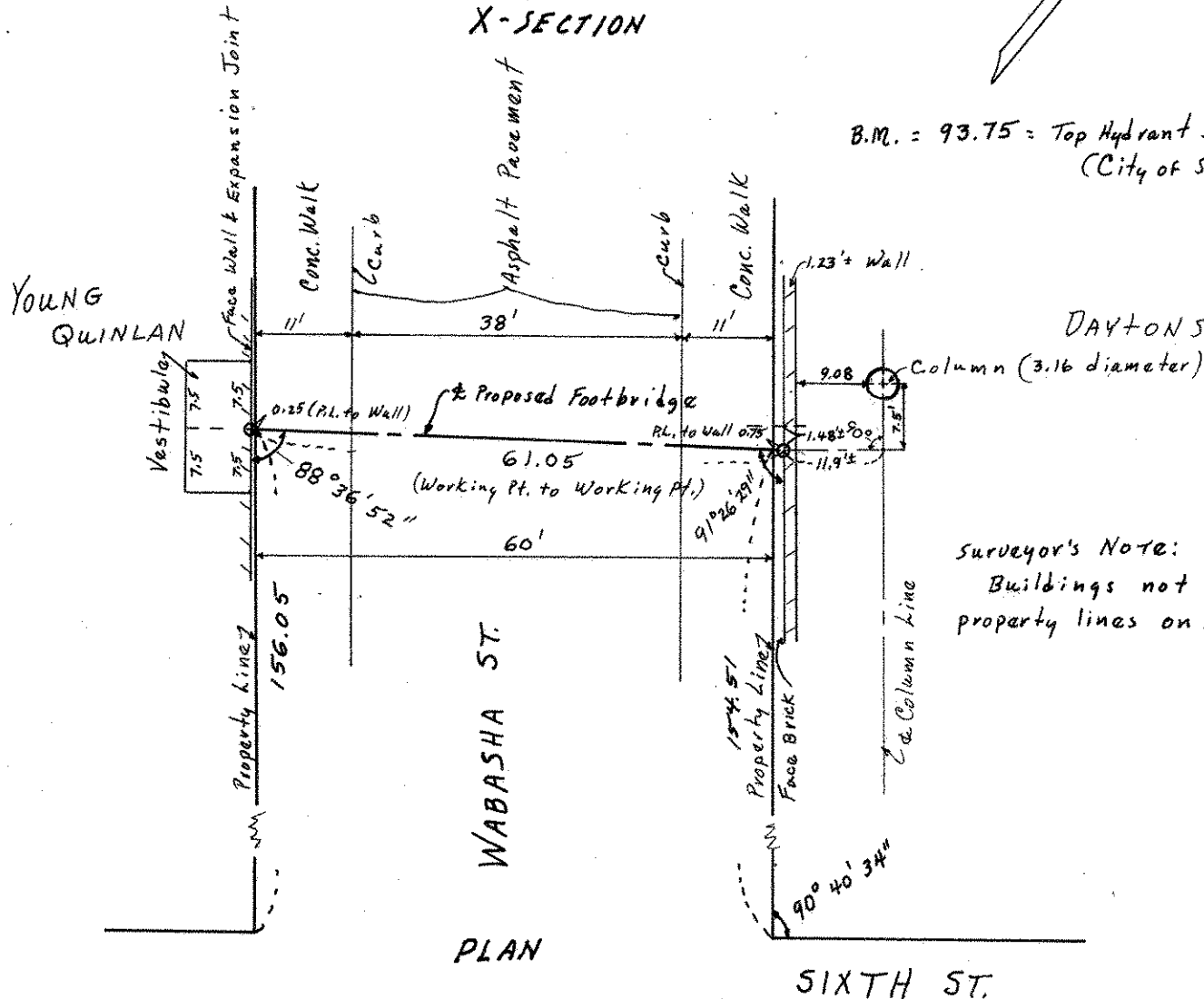
By *Charles O. Georgi*  
REGISTERED LAND SURVEYOR



### X-SECTION



B.M. = 93.75 = Top Hydrant SE Cor. 6<sup>th</sup> & Wabasha  
(City of St. Paul Datum)



Surveyor's Note:  
Buildings not parallel to  
property lines on Wabasha St.