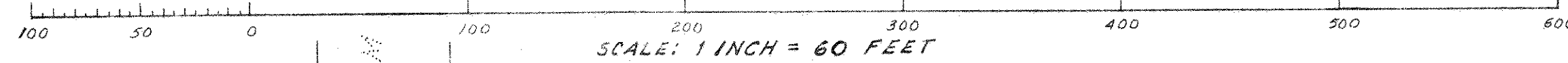


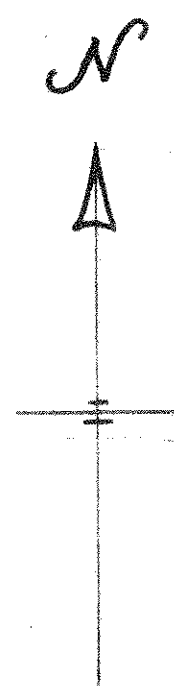
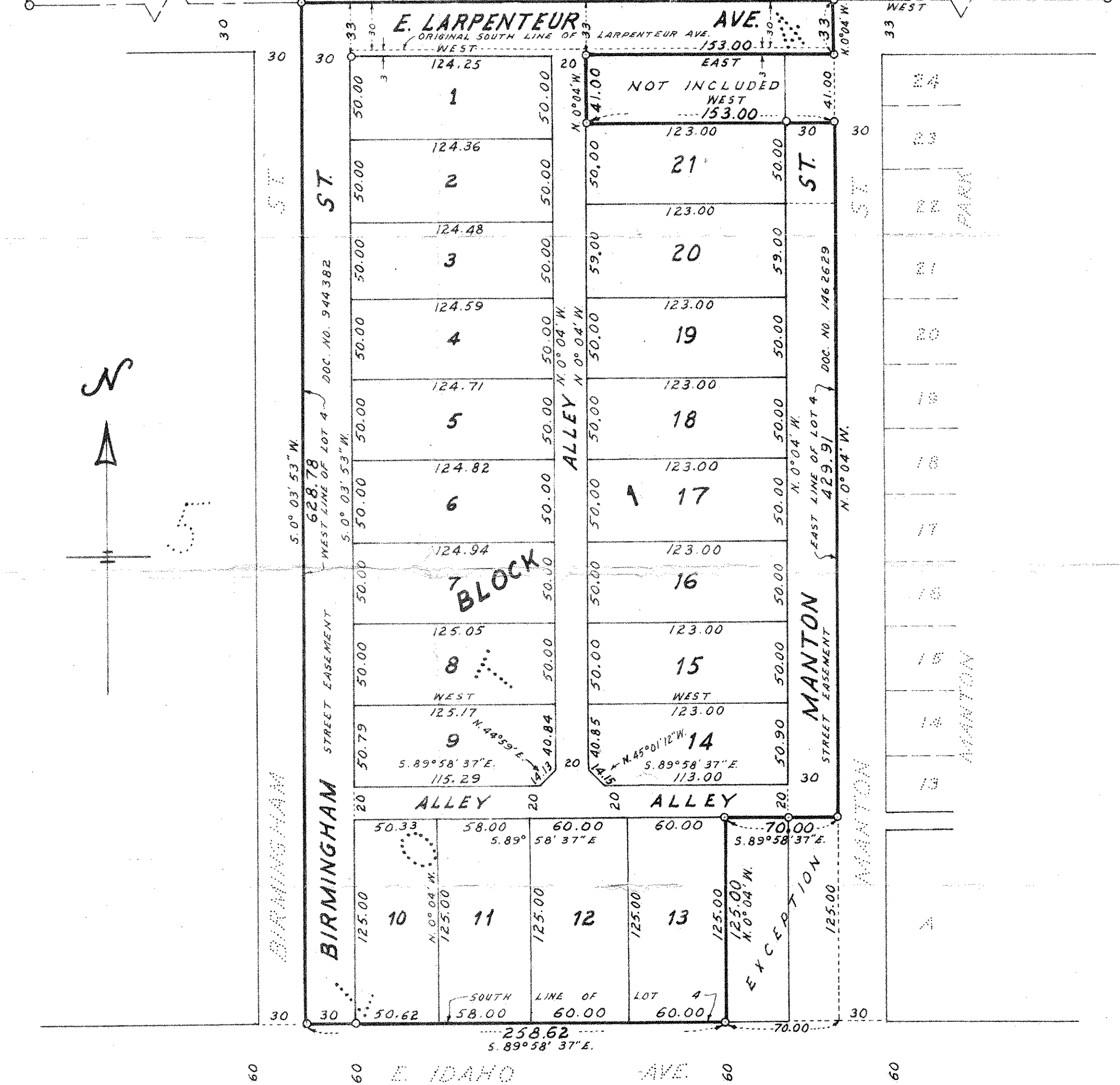
# THE LENTSCH CO. ADDITION



O Indicates iron monument.  
Bearing shown are on an assumed datum.  
WARREN AND FLINT'S ADD.  
BLOCK 1

CAST IRON RAMSEY CO. MONUMENT  
AT N.W. CORNER OF N.W. 1/4 OF  
SEC. 22, T. 29, R. 22

CAST IRON RAMSEY CO. MONUMENT  
AT N.E. CORNER OF N.W. 1/4 OF SEC. 22



38  
MAYFIELD'S SUB

39  
40

No delinquent taxes and transfer entered this \_\_\_\_\_ day of \_\_\_\_\_, 1976  
\_\_\_\_\_, Director By \_\_\_\_\_, Deputy  
Department of Property Taxation  
Register of Deeds, County of Ramsey, State of Minnesota:  
I hereby certify that this plat of THE LENTSCH CO. ADDITION was filed in this office this \_\_\_\_\_ day of \_\_\_\_\_, 1976, at \_\_\_\_\_ o'clock \_\_\_\_\_ M. and was filed in Book \_\_\_\_\_ of Plats, Page \_\_\_\_\_ and that the copies were compared with the Official Plat and found to be true and correct copies thereof.  
\_\_\_\_\_, By \_\_\_\_\_, Deputy  
Robert T. Gibbons  
Register of Deeds

Know All Persons By These Presents that the Lentzsch Company, Inc., a Minnesota corporation, owner of the following described property situated in the City of St. Paul, Ramsey County, Minnesota:  
Lot 4, The Pioneer Real Estate and Building Society's Subdivision of N. 1/2 of N.W. 1/4 of Section 22, Township 29, Range 22, according to the recorded plat thereof; except the South 125 feet of the East 70 feet of said Lot 4, and except the North 124 feet of the East 153 feet of said Lot 4.  
And Herbert T. Lentzsch and Maude G. Lentzsch, husband and wife, owners, and Minnesota Federal Savings and Loan Association, a United States corporation, mortgagee, of the following described property situated in the City of St. Paul, Ramsey County, Minnesota:  
The South 50 feet of the North 124 feet of the East 153 feet; and the North 33 feet of the East 153 feet; of Lot 4, The Pioneer Real Estate and Building Society's Subdivision of N. 1/2 of N.W. 1/4 of Section 22, Township 29, Range 22, according to the recorded plat thereof.  
Have caused the same to be surveyed, platted and known as THE LENTSCH CO. ADDITION, and do hereby dedicate to the public for public use forever the streets, avenue and alleys as shown on the plat.  
In witness whereof said The Lentzsch Company, Inc., a Minnesota corporation, has caused these presents to be signed by its proper officer and its corporate seal to be hereunto affixed this \_\_\_\_\_ day of \_\_\_\_\_, 1976.  
In witness whereof said Herbert T. Lentzsch and said Maude G. Lentzsch, husband and wife, have hereunto set their hands and seals this \_\_\_\_\_ day of \_\_\_\_\_, 1976.  
In witness whereof said Minnesota Federal Savings and Loan Association, a United States corporation, has caused these presents to be signed by its proper officers and its corporate seal to be hereunto affixed this \_\_\_\_\_ day of \_\_\_\_\_, 1976.

Signed: The Lentzsch Company Inc.

\_\_\_\_\_, Its President  
Herbert T. Lentzsch Signed:

Herbert T. Lentzsch Maude G. Lentzsch  
Signed: Minnesota Federal Savings and Loan Association

Its  
Its

State of Minnesota } S.S.  
County of Ramsey } The foregoing instrument was acknowledged before me this \_\_\_\_\_ day of \_\_\_\_\_, 1976, by Herbert T. Lentzsch, President of The Lentzsch Company, Inc., a Minnesota corporation, on behalf of the corporation

State of Minnesota } S.S.  
County of Ramsey } Notary Public, Ramsey County, Minnesota.  
My commission expires \_\_\_\_\_  
The foregoing instrument was acknowledged before me this \_\_\_\_\_ day of \_\_\_\_\_, 1976, by Herbert T. Lentzsch and Maude G. Lentzsch, husband and wife.

State of Minnesota } S.S.  
County of Ramsey } Notary Public, Ramsey County, Minnesota.  
My commission expires \_\_\_\_\_  
The foregoing instrument was acknowledged before me this \_\_\_\_\_ day of \_\_\_\_\_, 1976, by \_\_\_\_\_ and \_\_\_\_\_ of Minnesota Federal Savings and Loan Association, a United States corporation, on behalf of the corporation.

Notary Public, Ramsey County, Minnesota,  
My commission expires \_\_\_\_\_

I, John R. Turpin, hereby certify that I have surveyed and platted the property described in the dedication of this plat as THE LENTSCH CO. ADDITION; that this plat is a correct representation of said survey; that all distances are correctly shown on the plat; that all monuments have been correctly placed in the ground as shown; that the outside boundary lines are correctly shown on the plat; and there are no wet lands, easements or public highways other than as shown thereon.

John R. Turpin  
Registered Land Surveyor  
Minnesota Registration No. 6740

State of Minnesota } S.S.  
County of Ramsey } The Surveyor's certificate was subscribed and sworn to before me this \_\_\_\_\_ day of \_\_\_\_\_, 1976.

Notary Public, Ramsey County, Minnesota  
My commission expires \_\_\_\_\_

Ramsey County Plat Commission:  
Accepted and approved this \_\_\_\_\_ day of \_\_\_\_\_, A. D. 1976.

\_\_\_\_\_  
\_\_\_\_\_  
\_\_\_\_\_  
Plat Commission  
\_\_\_\_\_  
City Engineer of St. Paul  
City of St. Paul, Minnesota:  
Approved and accepted by the City Council of the City of St. Paul, Minnesota this \_\_\_\_\_ day of \_\_\_\_\_, 1976

City Clerk