

FROM THE OFFICE OF

CHARLES O. GEORGI COMPANY

2215 West County Road B

Saint Paul, Minnesota 55113

REGISTERED CIVIL ENGINEER AND LAND SURVEYOR



I Hereby Certify that this plat shows a survey made by me of the property described on this plat, and that the corners are correctly placed as shown, and that all locations have been correctly shown.

Surveyed For Alan Rein

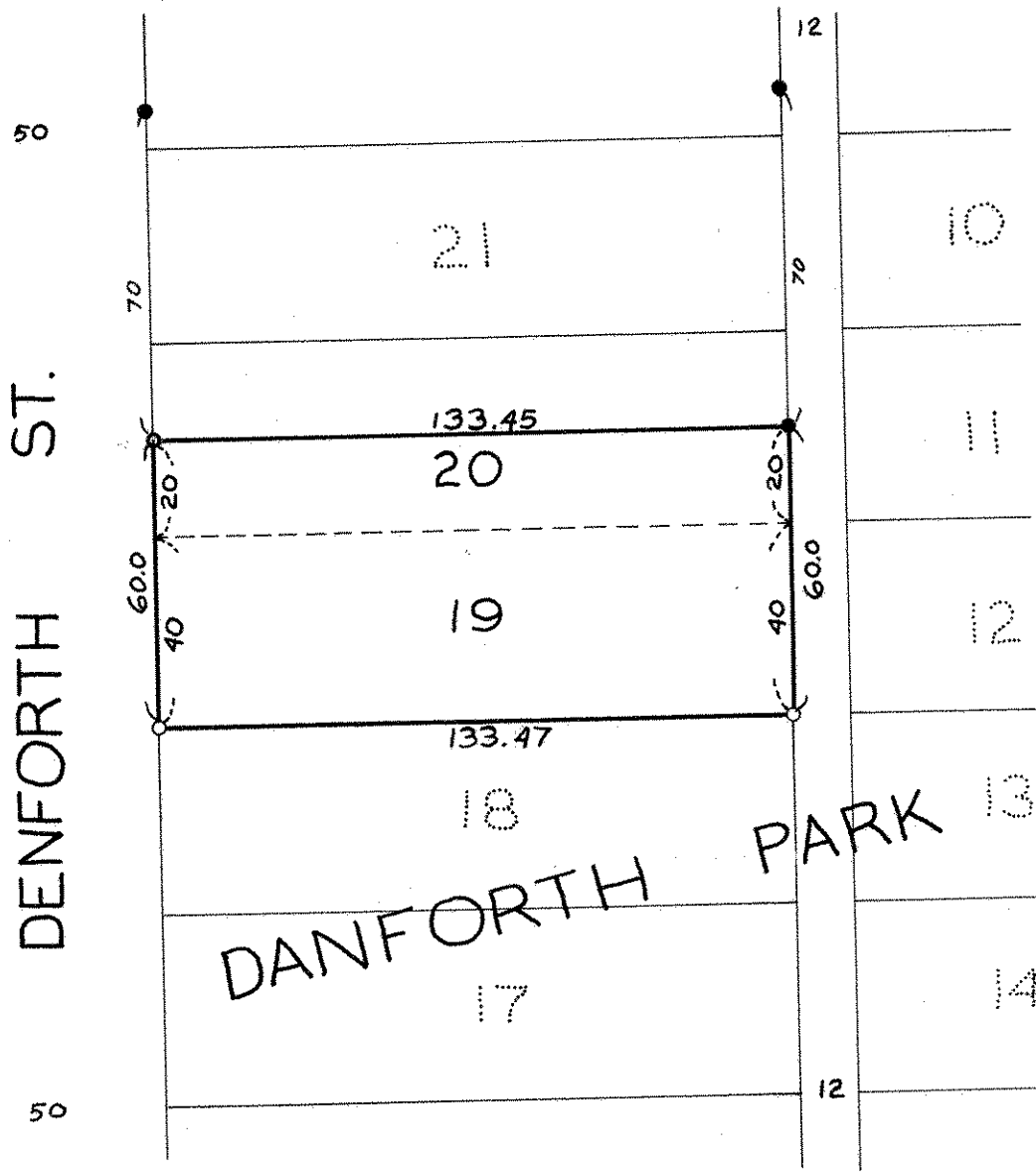
Date July 1976

Scale 1" = 40'

By Charles O. Georgi
REGISTERED LAND SURVEYOR

Description:

Lot 19 and South 20 feet of Lot 20,
Danforth Park,
Ramsey County, Minnesota



○ Denotes Iron Pipe Monument

● Denotes Iron Pipe Monument Found in Place