

NW 32 29 23

FROM THE OFFICE OF

CHARLES O. GEORGI COMPANY

2215 West County Road B

Saint Paul, Minnesota 55113

REGISTERED CIVIL ENGINEER AND LAND SURVEYOR

Certificate of Survey

I Hereby Certify that this plat shows a survey made by me of the property described on this plat, and that the corners are correctly placed as shown, and that all locations have been correctly shown.

Surveyed For Arnold Klasen

Date August 1976

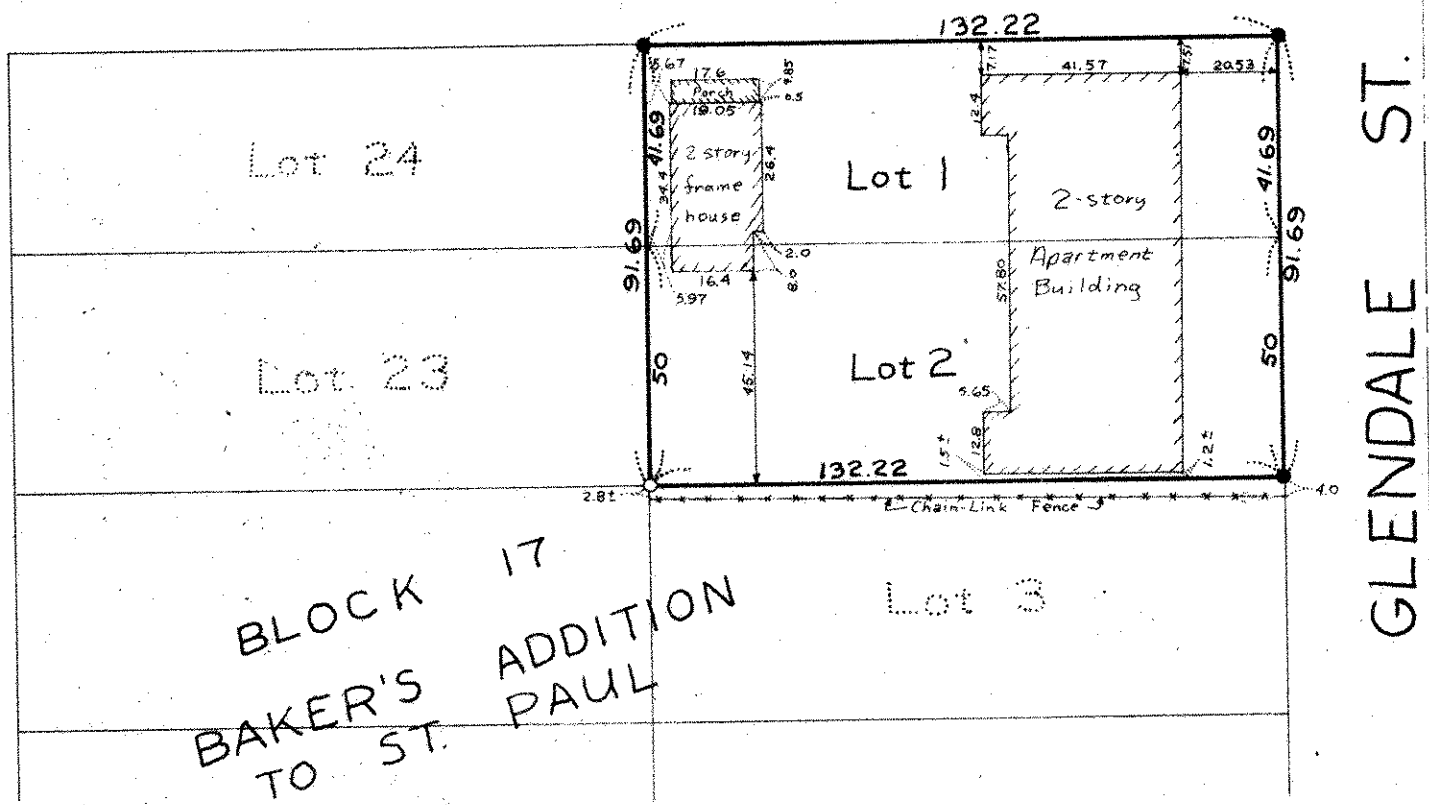
Scale 1" = 40'

By Charles O. Georgi
REGISTERED LAND SURVEYOR

Description:

Lots 1 and 2, Block 17,
Baker's Addition to St. Paul
Ramsey County, Minnesota.

MYRTLE AVE.



○ Denotes Iron Pipe Monument.
● Denotes Iron Pipe Monument Found in Place.