

FROM THE OFFICE OF

# CHARLES O. GEORGI COMPANY

2215 West County Road B

Saint Paul, Minnesota 55113

REGISTERED CIVIL ENGINEER AND LAND SURVEYOR



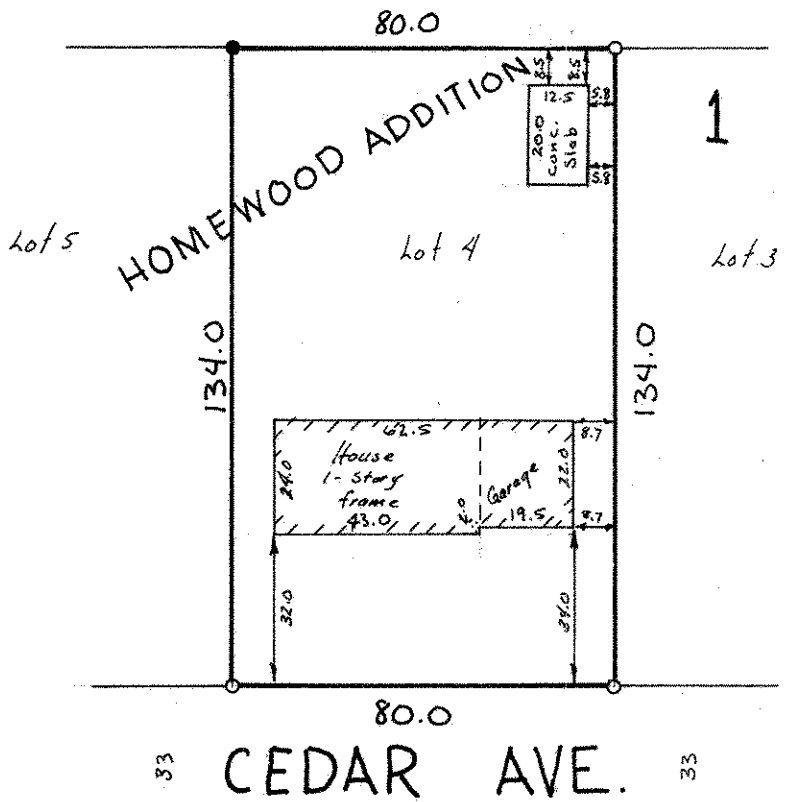
**I Hereby Certify that** this plat shows a survey made by me of the property described on this plat, and that the corners are correctly placed as shown, and that all locations have been correctly shown.

Surveyed For *Jene Anonsen*  
Date *October 1976*  
Scale *1" = 40'*

By *Charles O. Georgi*  
REGISTERED LAND SURVEYOR

**Description:**

*Lot 4, Block 1,  
Homewood Addition,  
Ramsey County, Minnesota*



- o denotes iron pipe monument.
- denotes iron pipe monument found in place.

Quarter line of Section 25, T30N, R22W