

FROM THE OFFICE OF

CHARLES O. GEORGI COMPANY

2215 West County Road B

Saint Paul, Minnesota 55113

REGISTERED CIVIL ENGINEER AND LAND SURVEYOR

**Certificate
of Survey**

I Heroby Certify that this plat shows a survey made by me of the property described on this plat, and that the corners are correctly placed as shown, and that all locations have been correctly shown.

Surveyed For Raymond J. Kroiss

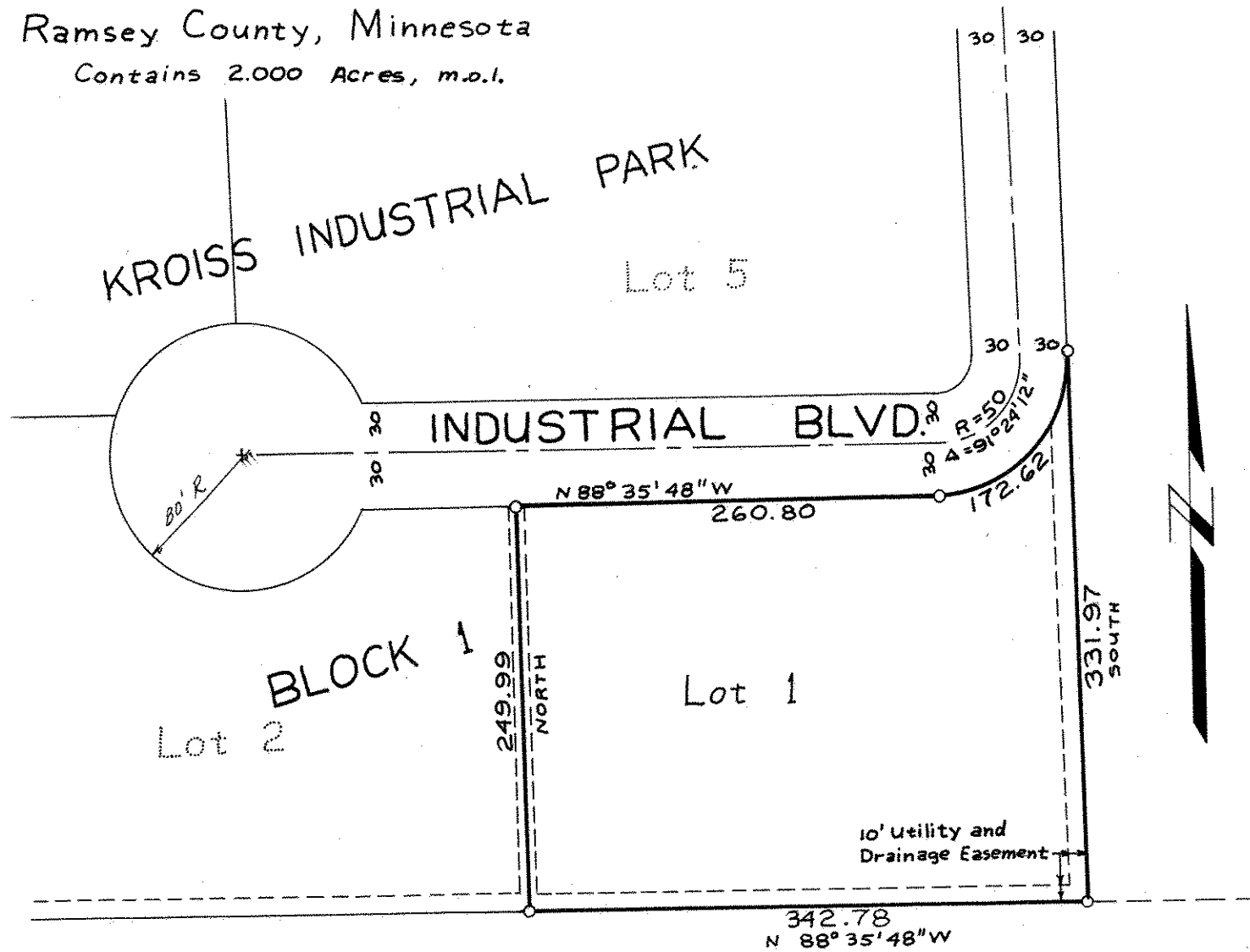
Date July 1976

Scale 1" = 100'

By Charles O. Georgi
REGISTERED LAND SURVEYOR

Description:

Lot 1, Block 1,
Kroiss Industrial Park,*
Ramsey County, Minnesota
Contains 2.000 Acres, m.o.l.



* Not recorded this date.
O Denotes Iron Pipe Monument