

FROM THE OFFICE OF

CHARLES O. GEORGI COMPANY

2215 West County Road B

Saint Paul, Minnesota 55113

REGISTERED CIVIL ENGINEER AND LAND SURVEYOR

Certificate of Survey

I Hereby Certify that this plat shows a ^{Lot-Split} survey made by me of the property described on this plat, and that the corners are correctly placed as shown, and that all locations have been correctly shown.
No Corners placed herewith - some placed earlier with plat.

Surveyed For Ray Kroiss

Date Sept 3 1976

Scale 1" = 100'

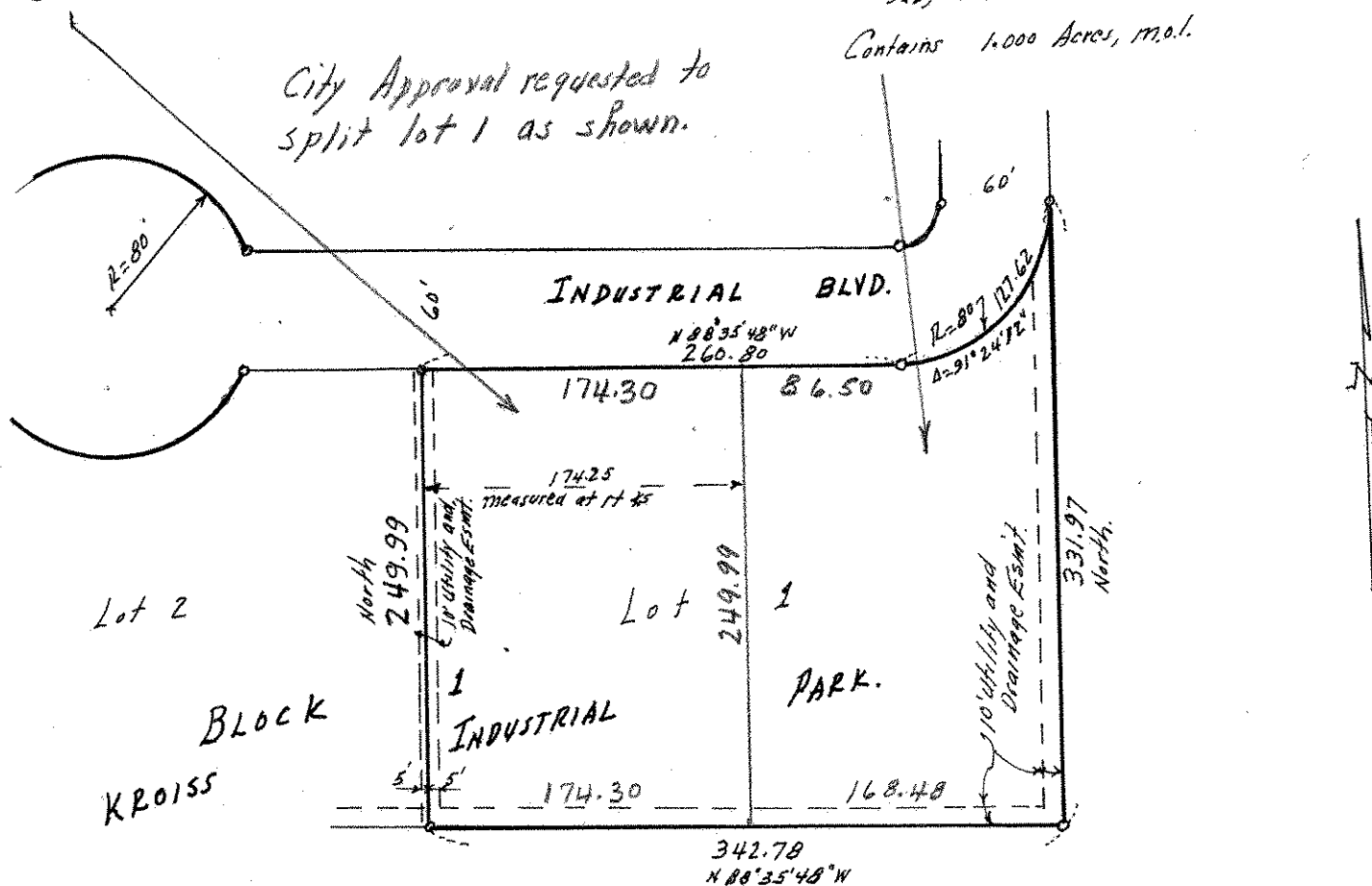
By Charles O. Georgi
REGISTERED LAND SURVEYOR

Description:

The West 174.25 feet of Lot 1, Block 1, Kroiss Industrial Park, measured at right angles thereto; according to the plat of record.
 Subject to easements of record. Ramsey County, Minn.
 Contains 1.000 Acres, m.o.l.

Description:

Lot 1, Block 1, Kroiss Industrial Park except the West 174.25 feet the east, measured at right angles thereto; according to the plat of record.
 Subject to easements of record. Ramsey County, Minn.
 Contains 1.000 Acres, m.o.l.



o Denotes iron pipe monuments placed earlier with plat.