

FROM THE OFFICE OF

# CHARLES O. GEORGI COMPANY

2215 West County Road B

Saint Paul, Minnesota 55113

REGISTERED CIVIL ENGINEER AND LAND SURVEYOR



*I Heroby Certify that this plat shows a survey made by me of the property described on this plat, and that the corners are correctly placed as shown, and that all locations have been correctly shown.*

Surveyed For Gordon Hedlund

Date November 1976

Scale 1" = 40'

By Charles O. Georgi  
REGISTERED LAND SURVEYOR

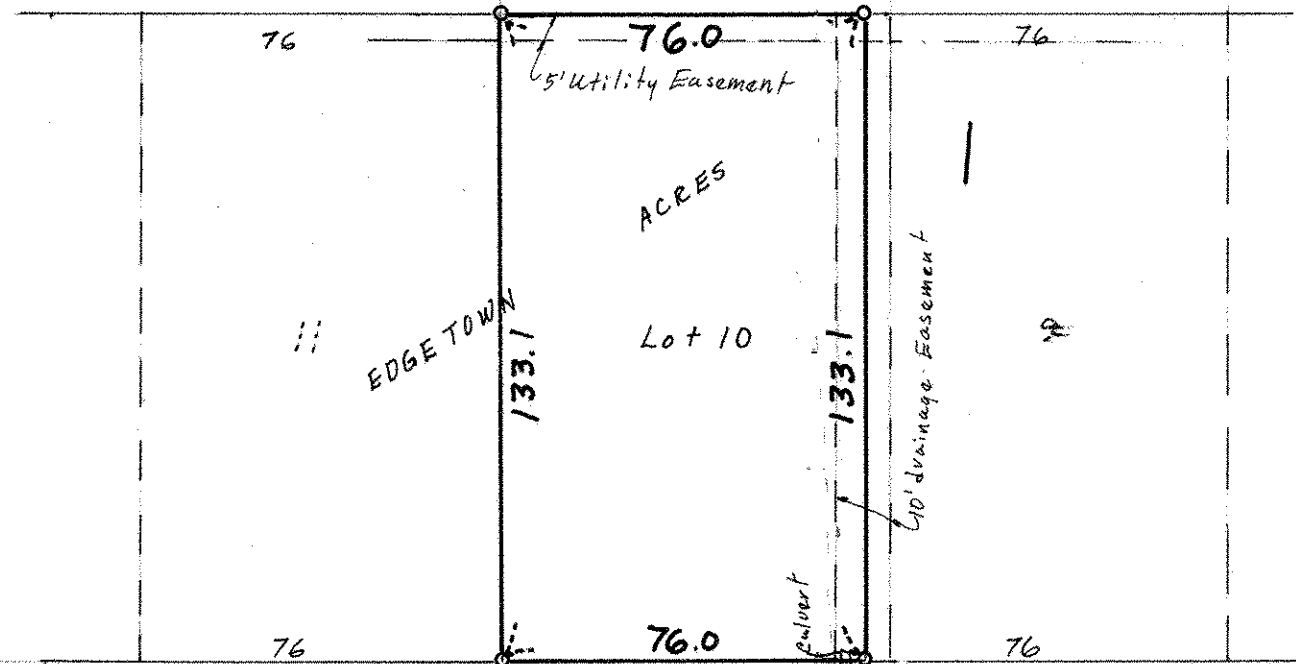
**Description:**

\* Lot 10, Block 1, Edgetown Acres

Ramsey County, Minnesota

\* Lot 10, BK1 marked Reserved on original Plat of Record.

UNPLATTED LAND



o Denotes Iron Monument

LOIS DRIVE