

FROM THE OFFICE OF

CHARLES O. GEORGI COMPANY

2215 West County Road B

Saint Paul, Minnesota 55113

REGISTERED CIVIL ENGINEER AND LAND SURVEYOR

Certificate of Survey

I Hereby Certify that this plat shows a ^{House location} survey made by me of the property described on this plat, and that the corners are correctly placed as shown, and that all locations have been correctly shown.

Surveyed For Mrs. Parante

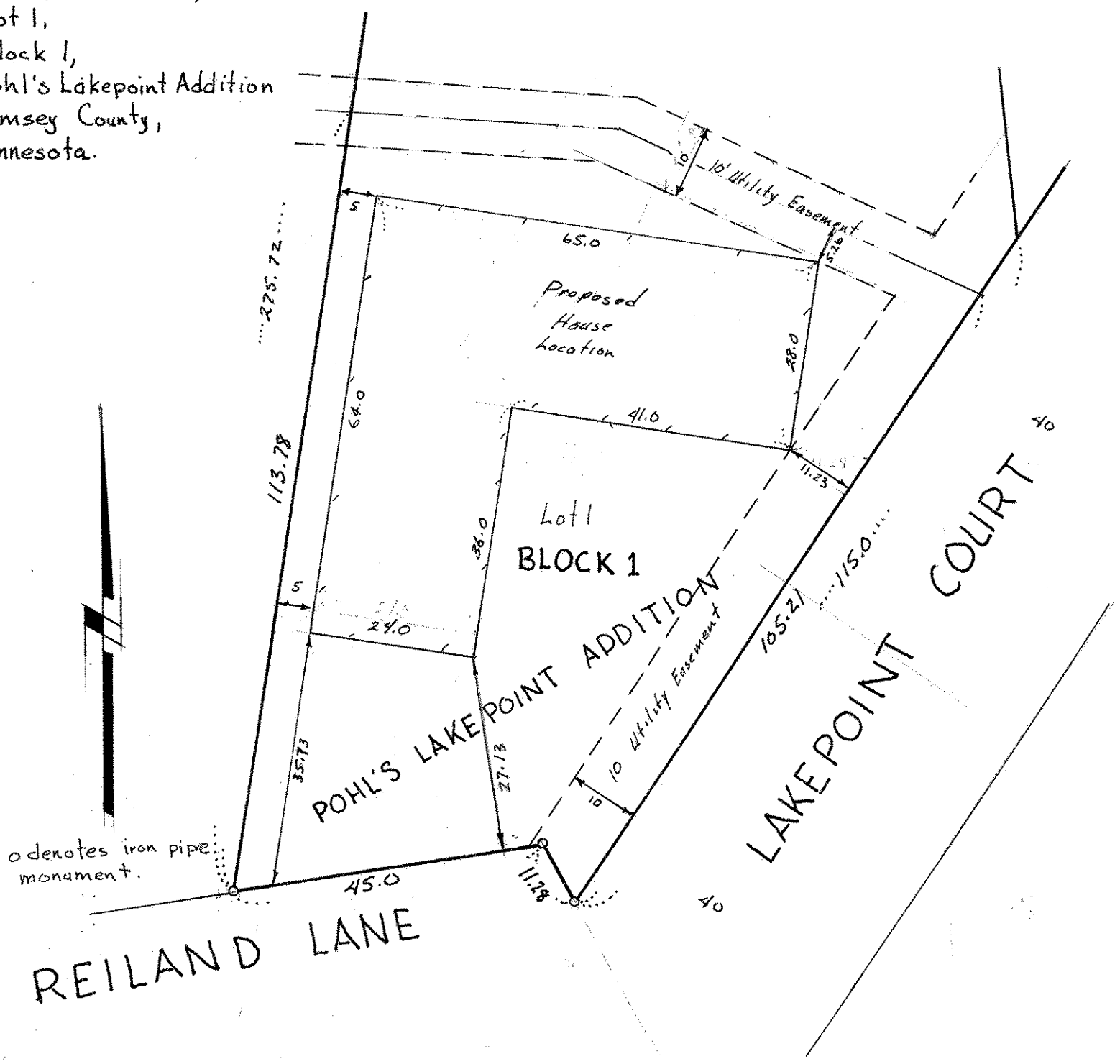
Date April 1976

Scale 1" = 20'

By Charles O. Georgi
REGISTERED LAND SURVEYOR

Description: (Southernly portion shown)

Lot 1,
Block 1,
Pohl's Lakepoint Addition
Ramsey County,
Minnesota.



o denotes iron pipe monument.