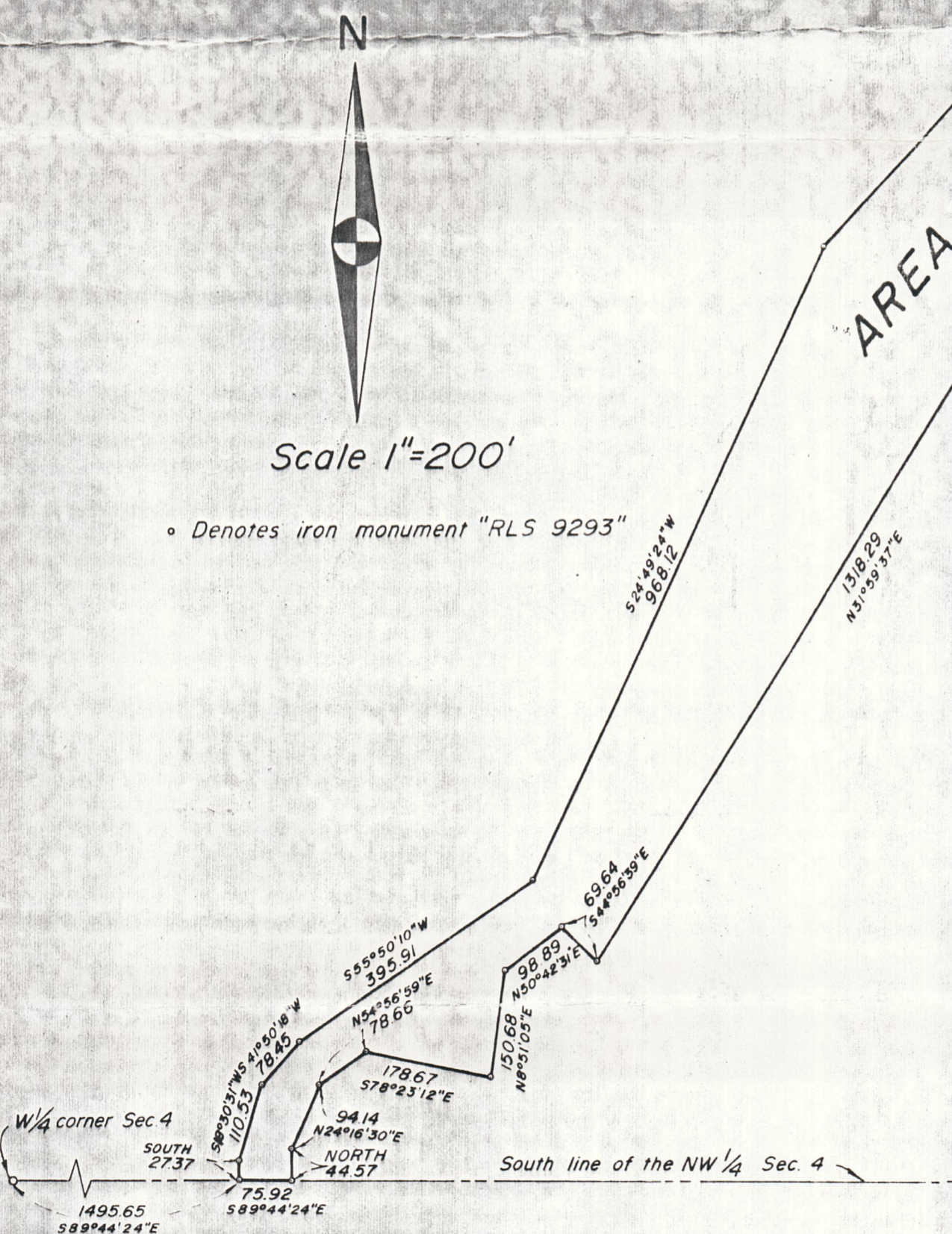


CERTIFICATE OF SURVEY

— for —

RAMSEY COUNTY OPEN SPACE SYSTEM



Scale 1"=200'

• Denotes iron monument "RLS 9293"

AREA = 140.15 ACRES

DESCRIPTION

That part of Government Lot 2, Government Lot 3, the Southeast Quarter of the Northwest Quarter, the Southwest Quarter of the Northeast Quarter, Section 4, Township 30, Range 23, and Long Lake Park, according to the plat, thereof, on file or of record in the office of the Register of Deeds, Ramsey County, Minnesota, described as follows: commencing at the Southwest corner of the Northwest Quarter of said Section 4; thence South 89 degrees, 44 minutes, 24 seconds East along the South line of the Northwest Quarter, a distance of 1495.65 feet to the point of beginning; thence continuing South 89 degrees, 44 minutes, 24 seconds East along said South line of the Northwest Quarter, a distance of 75.92 feet; thence North, a distance of 44.57 feet; thence North 24 degrees, 16 minutes, 30 seconds East, a distance of 94.14 feet; thence North 54 degrees, 56 minutes, 59 seconds East, a distance of 78.66 feet; thence South 78 degrees, 23 minutes, 12 seconds East, a distance of 178.67 feet; thence North 8 degrees, 51 minutes, 05 seconds East, a distance of 150.68 feet; thence North 50 degrees, 42 minutes, 31 seconds East, a distance of 98.89 feet; thence South 44 degrees, 56 minutes, 39 seconds East, a distance of 69.64 feet; thence North 31 degrees, 59 minutes, 37 seconds East, a distance of 1318.29 feet; thence North 40 degrees, 46 minutes, 54 seconds East, a distance of 720.44 feet; thence North 87 degrees, 26 minutes, 06 seconds East, a distance of 265.22 feet; thence North 29 degrees, 15 minutes, 43 seconds East, a distance of 228.61 feet; thence North 32 degrees, 41 minutes, 18 seconds East, a distance of 695.77 feet to a point on the East line of Government Lot 2, distance 539.68 feet South of the Northeast corner of said Government Lot 2 as measured along said East line; thence North 0 degrees, 33 minutes, 42 seconds West along the East line of said Government Lot 2, a distance of 140.00 feet; thence South 35 degrees, 52 minutes, 20 seconds West, a distance of 796.85 feet; thence South 66 degrees, 46 minutes, 10 seconds West, a distance of 449.41 feet; thence South 42 degrees, 30 minutes, 39 seconds West, a distance of 1068.06 feet; thence South 24 degrees, 49 minutes, 24 seconds West, a distance of 968.12 feet; thence South 55 degrees, 50 minutes, 10 seconds West, a distance of 395.91 feet; thence South 41 degrees, 50 minutes, 18 seconds West, a distance of 78.45 feet; thence South 18 degrees, 30 minutes, 31 seconds West, a distance of 110.53 feet; thence South a distance of 27.37 feet to the point of beginning.

I hereby certify that this is a true and correct representation of a survey of the boundaries of the land described hereon, and of the location of all visible encroachments, if any, from or on said land. As surveyed by me this 11th day of FEBRUARY, A.D., 1976.

MINNESOTA VALLEY SURVEYORS and ENGINEERS, CORP.
By John L. Christman, Minn. Reg. Land Surveyor No. 9293

