

FROM THE OFFICE OF

CHARLES O. GEORGI COMPANY

2215 West County Road B

Saint Paul, Minnesota 55113

REGISTERED CIVIL ENGINEER AND LAND SURVEYOR

**Certificate
of Survey**

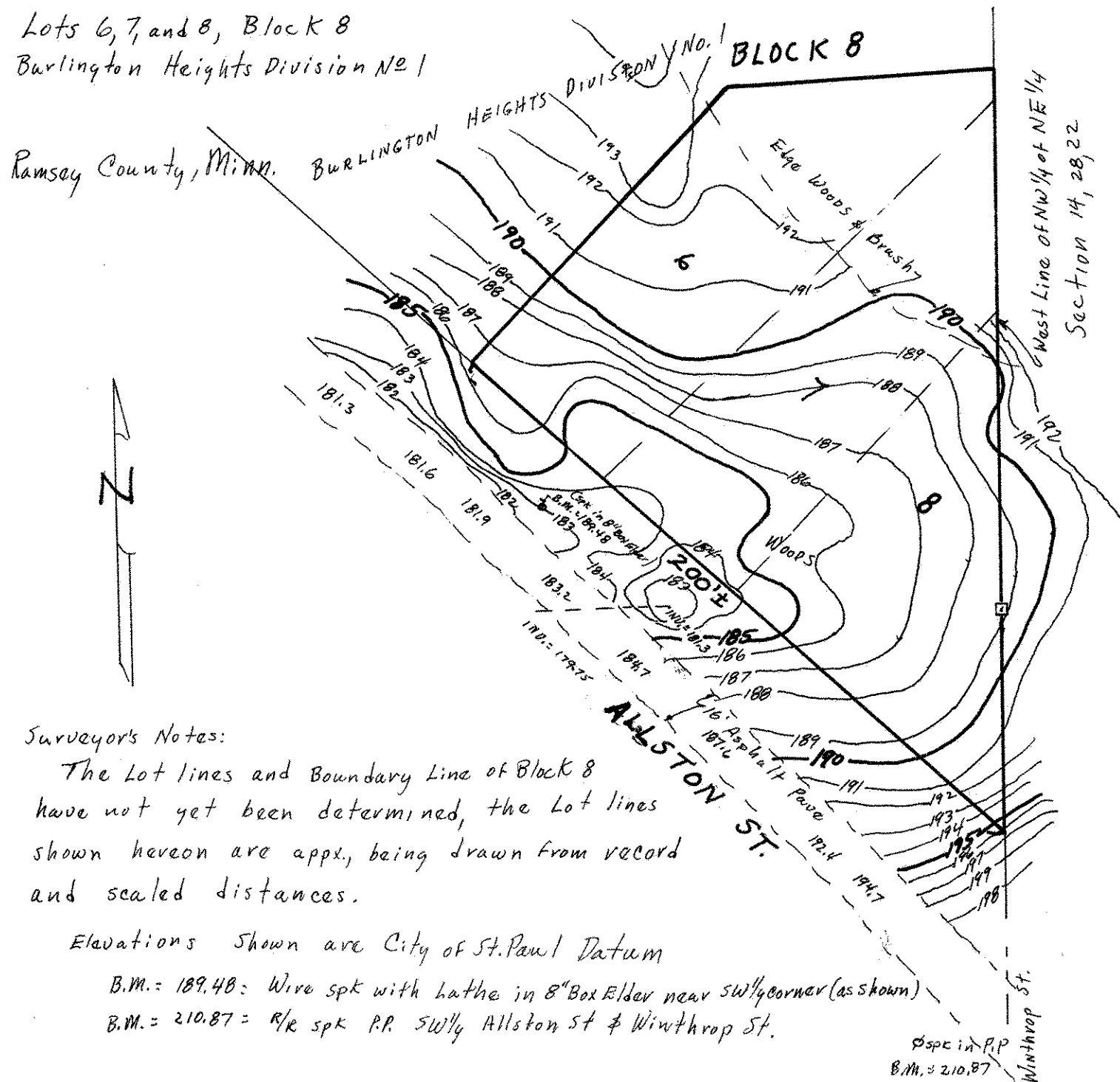
I ^{Topography} Hereby Certify that this plat shows a survey made by me of the property described on this plat, and that the corners are correctly placed as shown, and that all locations have been correctly shown.

Surveyed For Jon ThomsenDate September 1975Scale 1" = 40'By Charles O. Georgi
REGISTERED LAND SURVEYOR

Description: (Survey Not Complete)

Lots 6, 7, and 8, Block 8
Burlington Heights Division No. 1

Ramsey County, Minn.



Surveyor's Notes:

The Lot lines and Boundary Line of Block 8 have not yet been determined, the Lot lines shown hereon are appx., being drawn from record and scaled distances.

Elevations Shown are City of St. Paul Datum

B.M. = 189.48 = Wire spk with lathe in 8" Box Elder near SW 1/4 corner (as shown)

B.M. = 210.87 = R/R spk P.P. SW 1/4 Allston St & Winthrop St.

Spk in P.P.
B.M. = 210.87