

FROM THE OFFICE OF

# CHARLES O. GEORGI COMPANY

2215 West County Road B

Saint Paul, Minnesota 55113

REGISTERED CIVIL ENGINEER AND LAND SURVEYOR

## Certificate of Survey

I Hereby Certify that this plat shows a survey made by me of the property described on this plat, and that the corners are correctly placed as shown, and that all locations have been correctly shown. *7/12/76 Revised description as now furnished.*

Project No. Minn. A-1-7  
Parcel No. 1-E  
Area: 12,455 Sq.ft., m.o.l.

Surveyed For *Housing Authority*

Date *September 1975*

Scale *1"=50'*

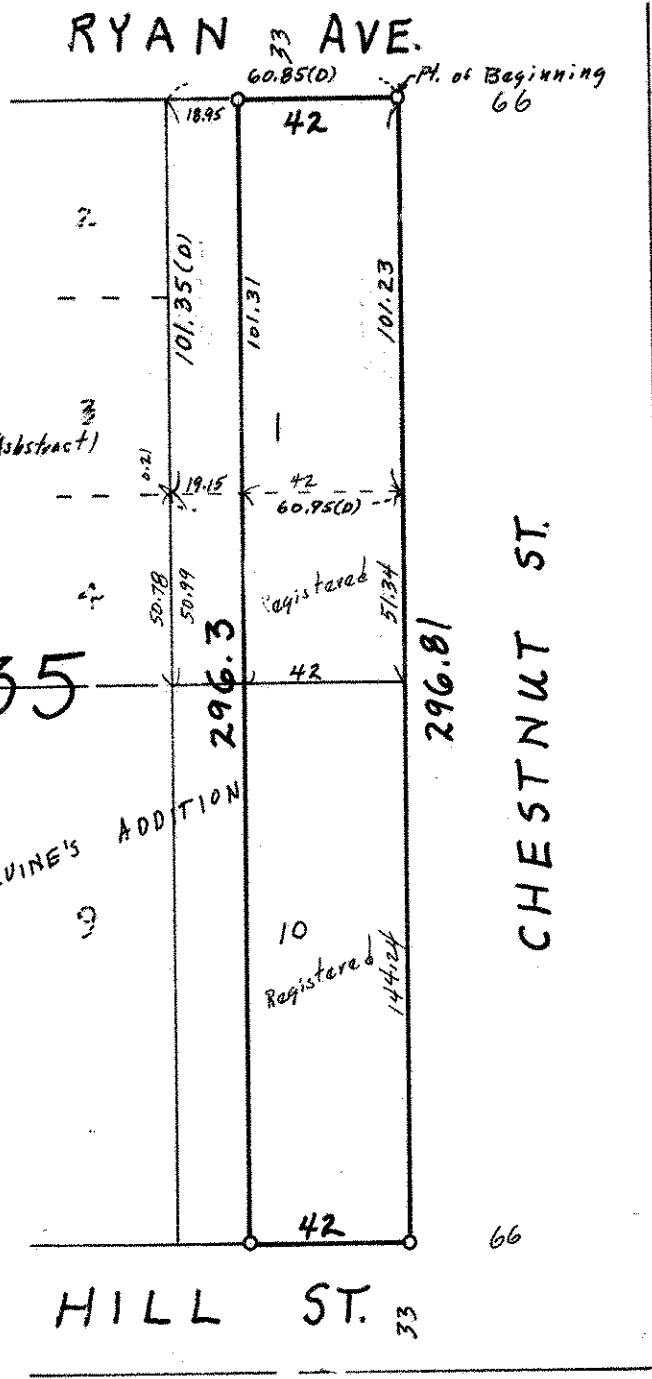
By *Charles O. Georgi*  
REGISTERED LAND SURVEYOR

**Description:**

The NE 1/4 42.0 feet of that part of Lot 1, Block 35, Rice and Irvine's Addition to St. Paul, described as follows:

Beginning at the NW corner of said Lot 1, Block 35, thence running SW 1/4 along the southerly side of Ryan Ave. a distance of 60.85 feet to the boundary line between Lots 1 and 2, thence SE 1/4 along said Lot 1 and approximately parallel to Chestnut Street a distance of 101.35 feet; thence NE 1/4 and approximately parallel to Ryan Avenue a distance of 60.95 feet to the westerly side of Chestnut Street; thence NW 1/4 and along the westerly side of Chestnut Street a distance of 101.23 feet, more or less to the point of beginning. (Abstract)

Also the NE 1/4 42.0 feet of that part of Lot 1, Block 35, Rice and Irvine's Addition to St. Paul, lying SE 1/4 of a line described as extending from a point on the East line of said Lot 1 distant 101.23 feet SE 1/4 from the NE corner of said Lot 1, to a point on the West line of said Lot 1 distant 101.35 feet SE 1/4 from the NW corner of said Lot 1, (Registered) and the NE 1/4 42.0 feet of Lot 10, Block 35, Rice and Irvine's Addition to St. Paul. (Registered)



Ramsay County, Minn.

o Denotes Iron Monument