

FROM THE OFFICE OF

CHARLES O. GEORGI COMPANY

2215 West County Road B

Saint Paul, Minnesota 55113

REGISTERED CIVIL ENGINEER AND LAND SURVEYOR

**Certificate
of Survey**

I Hereby Certify that this plat shows a survey made by me of the property described on this plat, and that the corners are correctly placed as shown, and that all locations have been correctly shown.

Project No. Minn A-1-7
Parcel No. 61-E
Area 6,253.59 ft. m.o.l.

Surveyed For *Housing Authority*

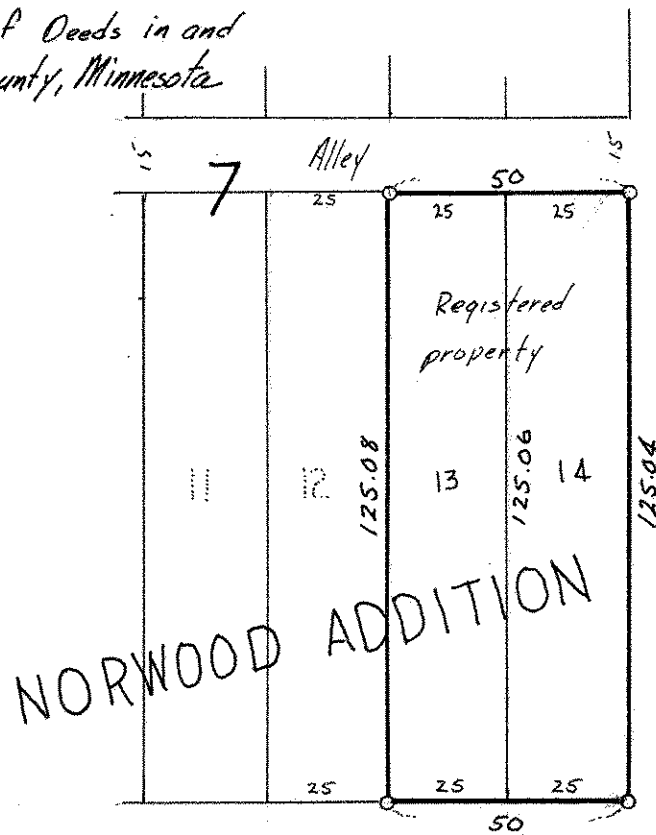
Date *March 1975*

Scale *1" = 40'*

By *Charles O. Georgi*
REGISTERED LAND SURVEYOR

Description:

*Lots 13 and 14, in Block 7 in
Norwood Addition to St. Paul,
according to the plat thereof on
file and of record in the office
of the Register of Deeds in and
for said Ramsey County, Minnesota*



DUKE ST.

MICHIGAN ST.

*o denotes iron
pipe monument*