

FROM THE OFFICE OF

CHARLES O. GEORGI COMPANY

2215 West County Road B

Saint Paul, Minnesota 55113

REGISTERED CIVIL ENGINEER AND LAND SURVEYOR



Project No. Minn. A-1-1
Parcel No. 174-B
Area 6000 sq.ft. m.o.l.

I Hereby Certify that this plat shows a survey made by me of the property described on this plat, and that the corners are correctly placed as shown, and that all locations have been correctly shown.

Surveyed For Housing Authority

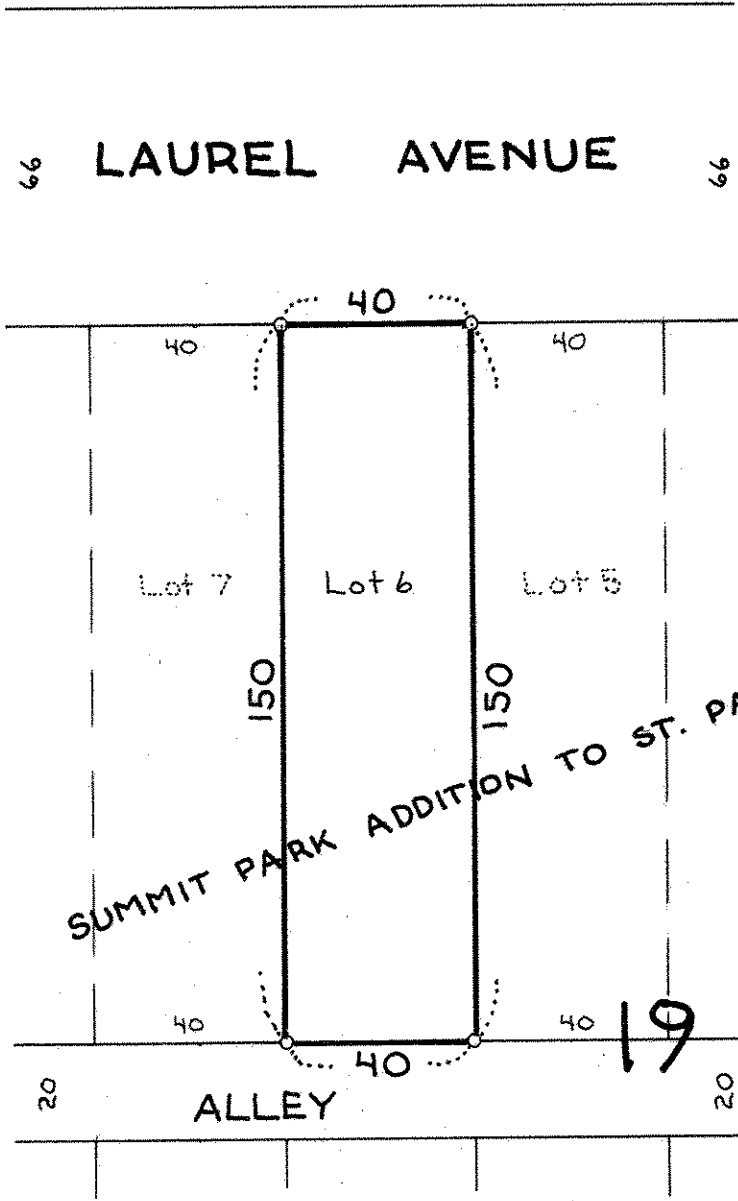
Date November 1975

Scale 1" = 40'

By *Charles O. Georgi*
REGISTERED LAND SURVEYOR

Description:

Lot 6,
Block 19,
Summit Park Addition to St. Paul,
Ramsey County, Minn.



o Denotes iron pipe monument