

FROM THE OFFICE OF

CHARLES O. GEORGI COMPANY

2215 West County Road B

Saint Paul, Minnesota 55113

REGISTERED CIVIL ENGINEER AND LAND SURVEYOR



I Hereby Certify that this plat shows a survey made by me of the property described on this plat, and that the corners are correctly placed as shown, and that all locations have been correctly shown.

Surveyed For Jerry Harley

Date May 1975

Scale 1" = 40'

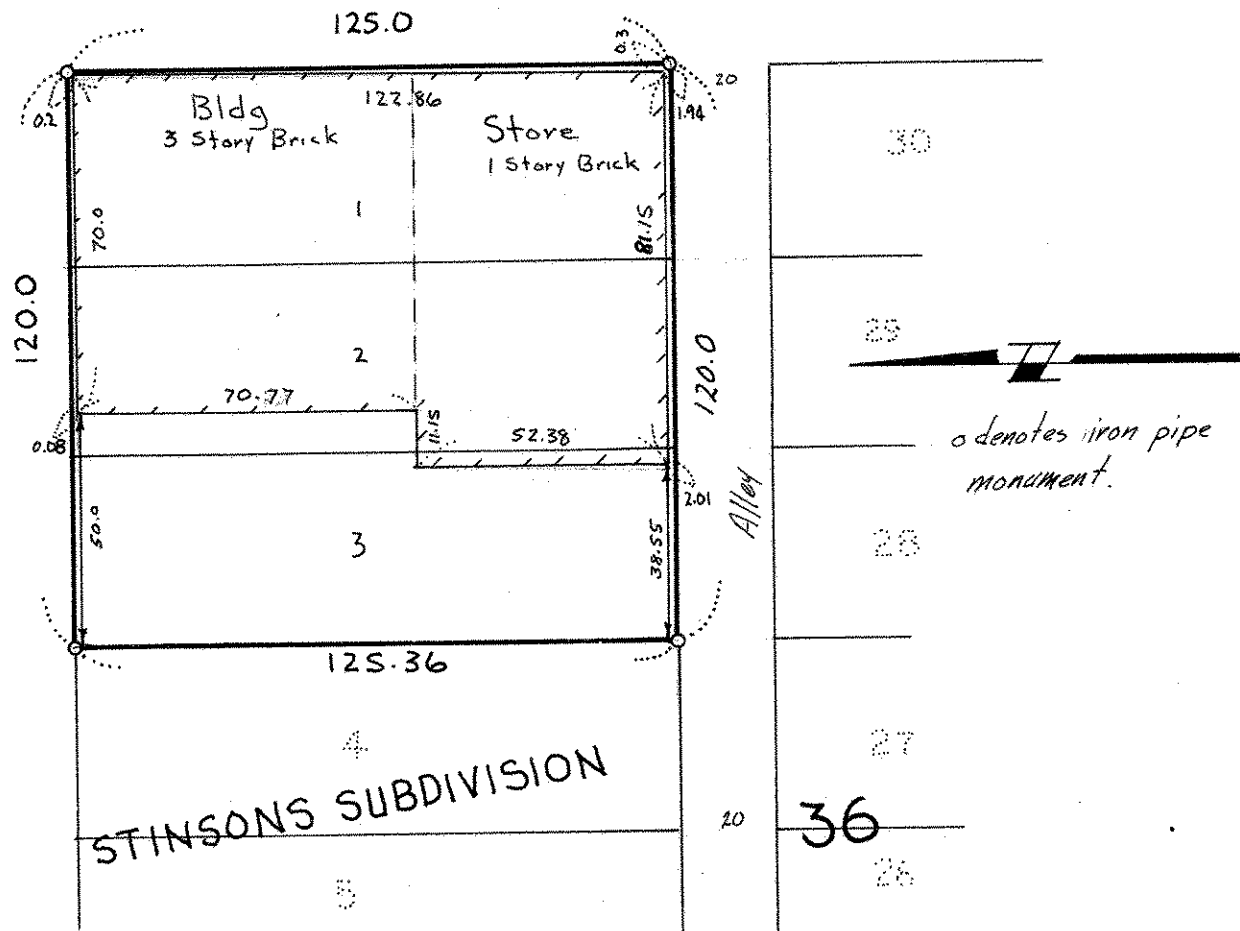
By Charles O. Georgi
REGISTERED LAND SURVEYOR

Description:

Lots 1, 2 and 3,
Stinsons Subdivision
of Block 36 of Arlington Hills
Addition to St. Paul,
Ramsey County, Minnesota

PAYNE AVE.

WELLS ST.



o denotes iron pipe monument.