

FROM THE OFFICE OF

**CHARLES O. GEORGI COMPANY**

2215 West County Road B

Saint Paul, Minnesota 55113

REGISTERED CIVIL ENGINEER AND LAND SURVEYOR



*I Hereby Certify that this plat shows a survey made by me of the property described on this plat, and that the corners are correctly placed as shown, and that all locations have been correctly shown.*

Surveyed For *Scott Barrett*

Date *Nov 1975*

Scale *1" = 100'*

By *Charles O. Georgi*  
REGISTERED LAND SURVEYOR

**Description:**

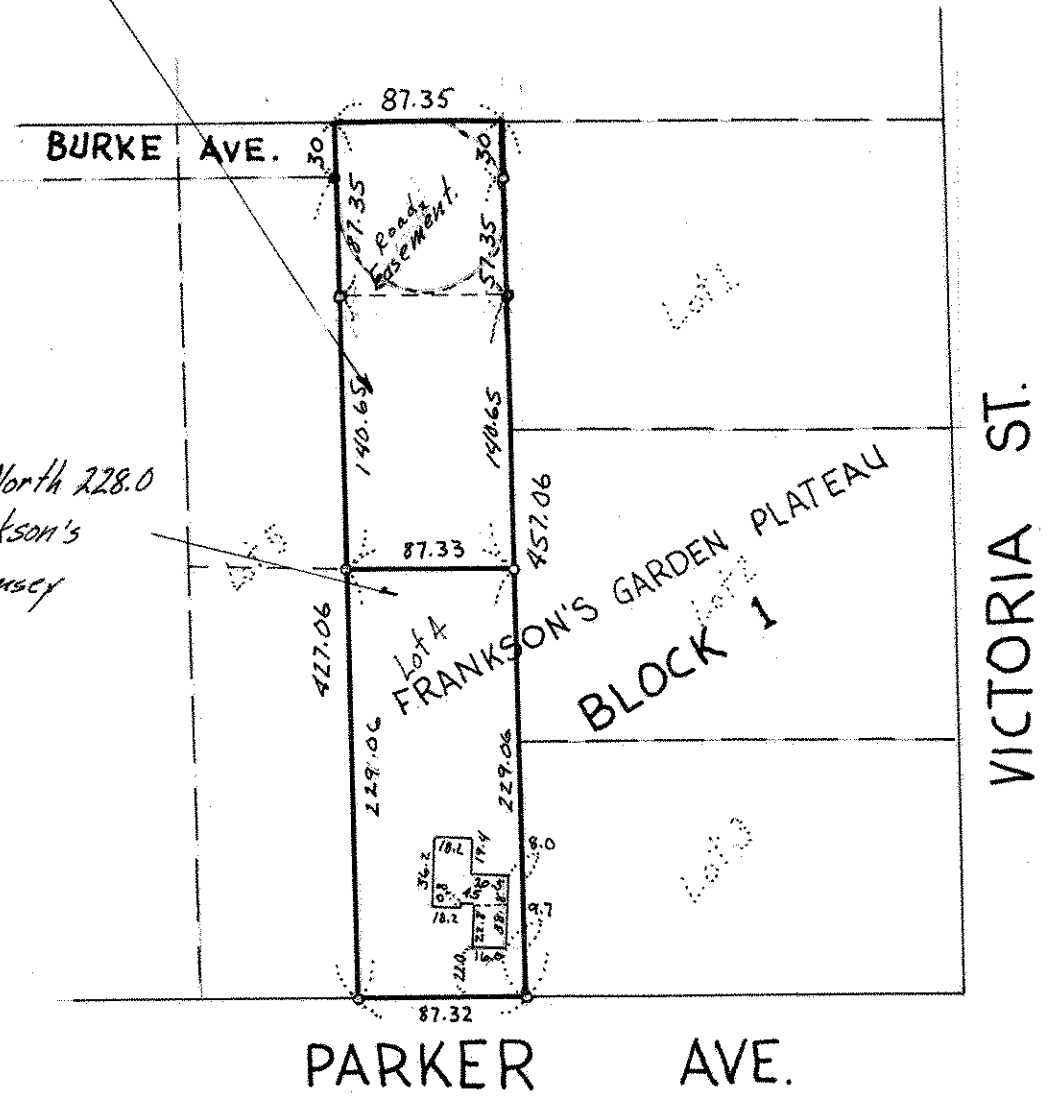
*The North 228.0 feet of Lot 4, Block 1, Frankson's Garden Plateau, subject to an easement for road purposes over the North 87.35 feet thereof, Ramsey County, Minnesota*

*Roseville approval requested to Split lot as shown.*

*Easement provides area for Cul-de-sac*

*Description*

*Lot 4 except the North 228.0 feet, Block 1, Frankson's Garden Plateau, Ramsey County, Minnesota*



- o* denotes iron pipe monument
- denotes iron pipe monument found in place