

FROM THE OFFICE OF

CHARLES O. GEORGI COMPANY

2215 West County Road B

Saint Paul, Minnesota 55113

REGISTERED CIVIL ENGINEER AND LAND SURVEYOR



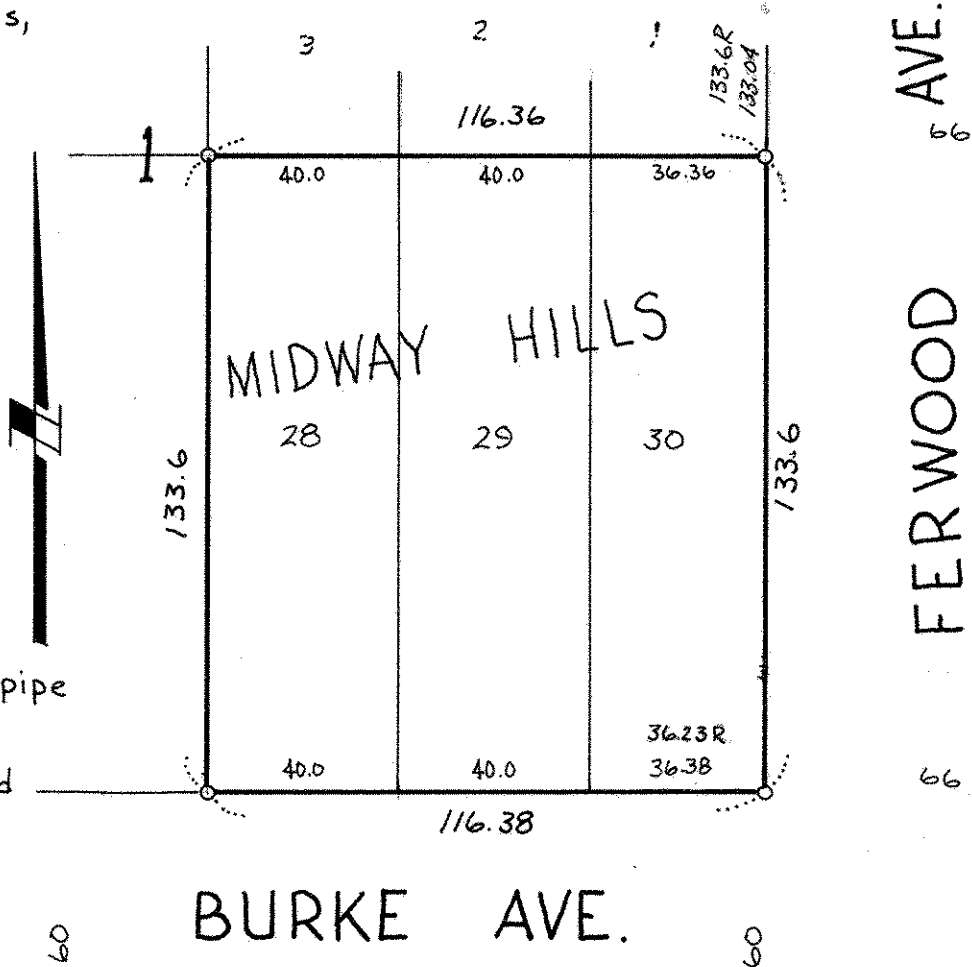
I Hereby Certify that this plat shows a survey made by me of the property described on this plat, and that the corners are correctly placed as shown, and that all locations have been correctly shown.

Surveyed For *William E. Hansen*
 Date *Sept. 1975*
 Scale *1" = 40'*

By *Charles O. Georgi*
 REGISTERED LAND SURVEYOR

Description:

Lot 28, 29 and 30,
 Block 1,
 Midway Hills Rearrangement of
 Como Garden lots,
 Ramsey County,
 Minnesota.



o denotes iron pipe monument.

R denotes record distance.

Note:

Lots 1, 15, 16 and 30 were used as odd lots East and West.
 Lots 1 to 15 were used as odd lots North and South.