

FROM THE OFFICE OF

CHARLES O. GEORGI COMPANY

2215 West County Road B

Saint Paul, Minnesota 55113

REGISTERED CIVIL ENGINEER AND LAND SURVEYOR

Certificate of Survey

I Herby Certify that this plat shows a survey made by me of the property described on this plat, and that the corners are correctly placed as shown, and that all locations have been correctly shown.

Surveyed For Richard Grekoff

Date July 1975

Scale 1" = 40'

By Charles O. Georgi
REGISTERED LAND SURVEYOR

Description:

Lot 10, except the East 120.0 feet thereof, Block 3, Bacon and Colemans Rice St. Acre lots, Ramsey County, Minnesota

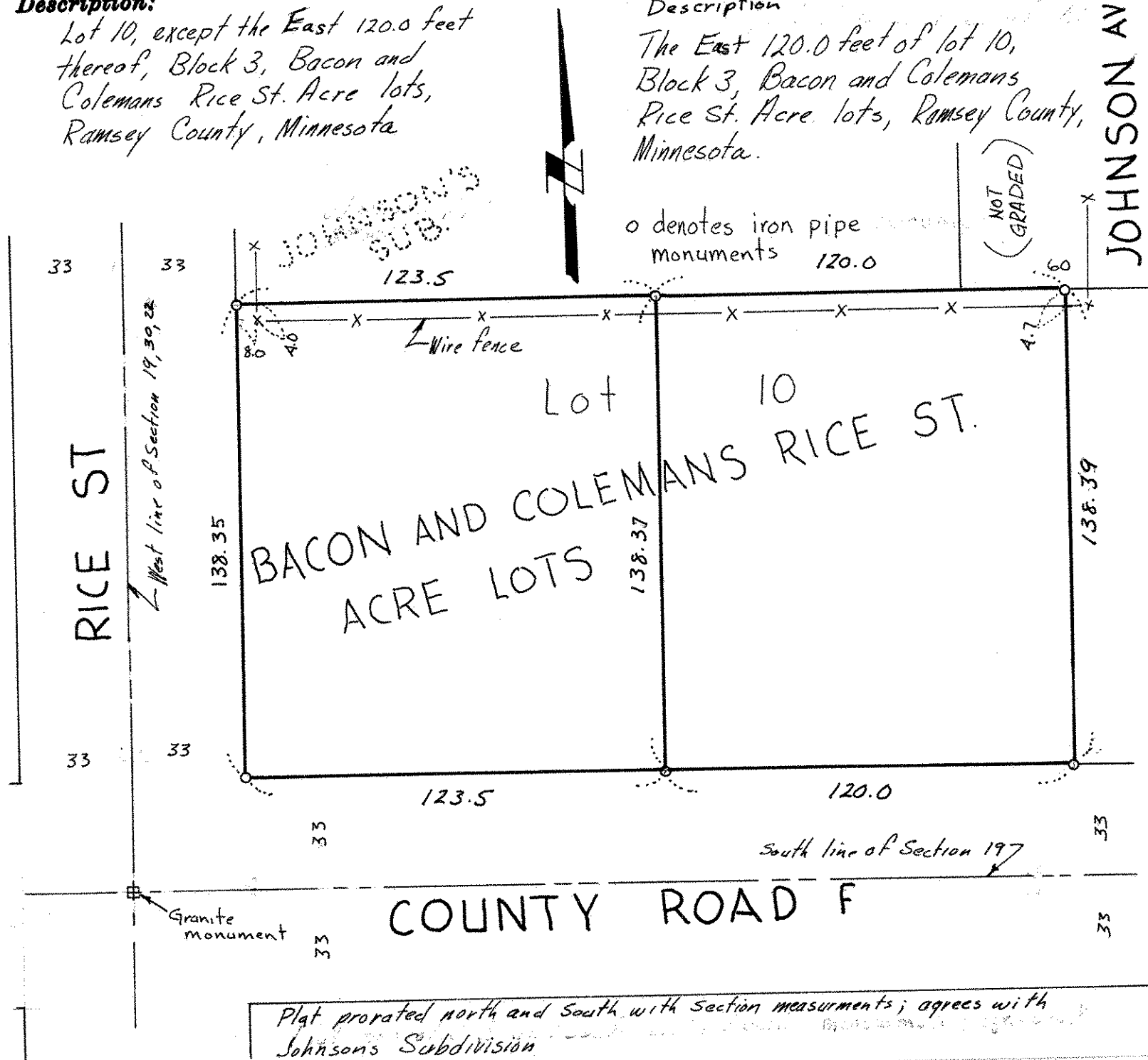
Description

The East 120.0 feet of lot 10, Block 3, Bacon and Colemans Rice St. Acre lots, Ramsey County, Minnesota.

o denotes iron pipe monuments 120.0

(NOT GRADED)

JOHNSON AVE.



Plat prorated north and south with section measurements; agrees with Johnson's Subdivision