

FROM THE OFFICE OF

**CHARLES O. GEORGI COMPANY**

2215 West County Road B

Saint Paul, Minnesota 55113

REGISTERED CIVIL ENGINEER AND LAND SURVEYOR



*I Hereby Certify that this plat shows a survey made by me of the property described on this plat, and that the corners are correctly placed as shown, and that all locations have been correctly shown.*

Surveyed For Tom Norberg

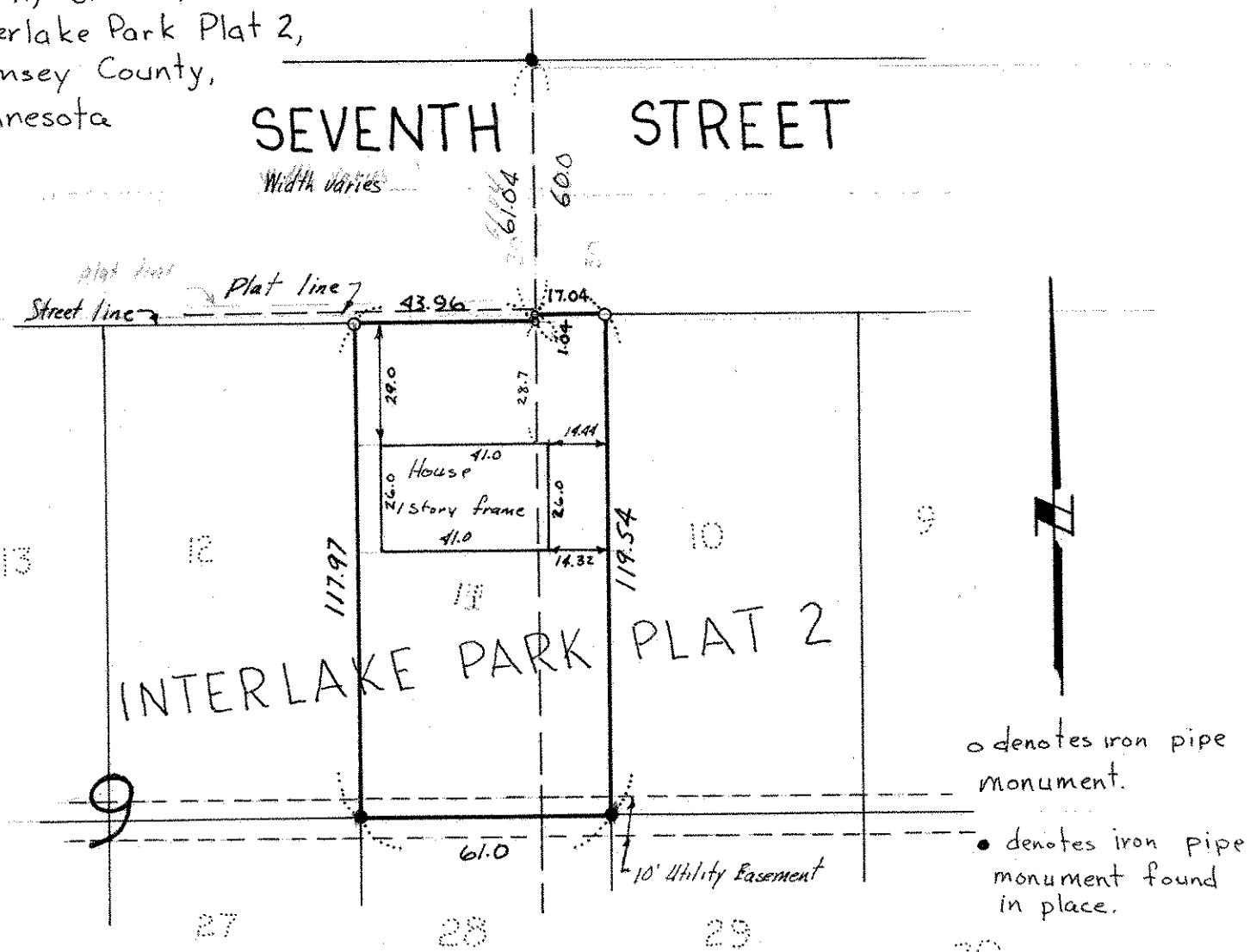
Date August 1975

Scale 1" = 40'

By Charles O. Georgi  
REGISTERED LAND SURVEYOR

**Description:**

Lot 11, Block 9,  
Interlake Park Plat 2,  
Ramsey County,  
Minnesota



**Surveyors Note:**

*it appears the plat line created a dog to the North instead of to the South to fit property line. Intended street width was variable*