

SW 11 28 23

FROM THE OFFICE OF

CHARLES O. GEORGI COMPANY

2215 West County Road B

Saint Paul, Minnesota 55113

REGISTERED CIVIL ENGINEER AND LAND SURVEYOR

Certificate of Survey

I Hereby Certify that this plat shows a survey made by me of the property described on this plat, and that the corners are correctly placed as shown, and that all locations have been correctly shown.

Project No. Minn A-1-7

Parcel No 174 B-D-E

Area. 9614 Sq. Ft. m.o.L.

Surveyed For Housing Authority

Date March 1974

Scale 1" = 40'

By *Charles O. Georgi*
REGISTERED LAND SURVEYOR

Description: 174 D

The West 10 feet of lot 24, Block 2,
Byrants Randolph St. Addition,
Ramsey County,
Minnesota

Contains 1202 Sq. Ft. m.o.L.

Description 174-B

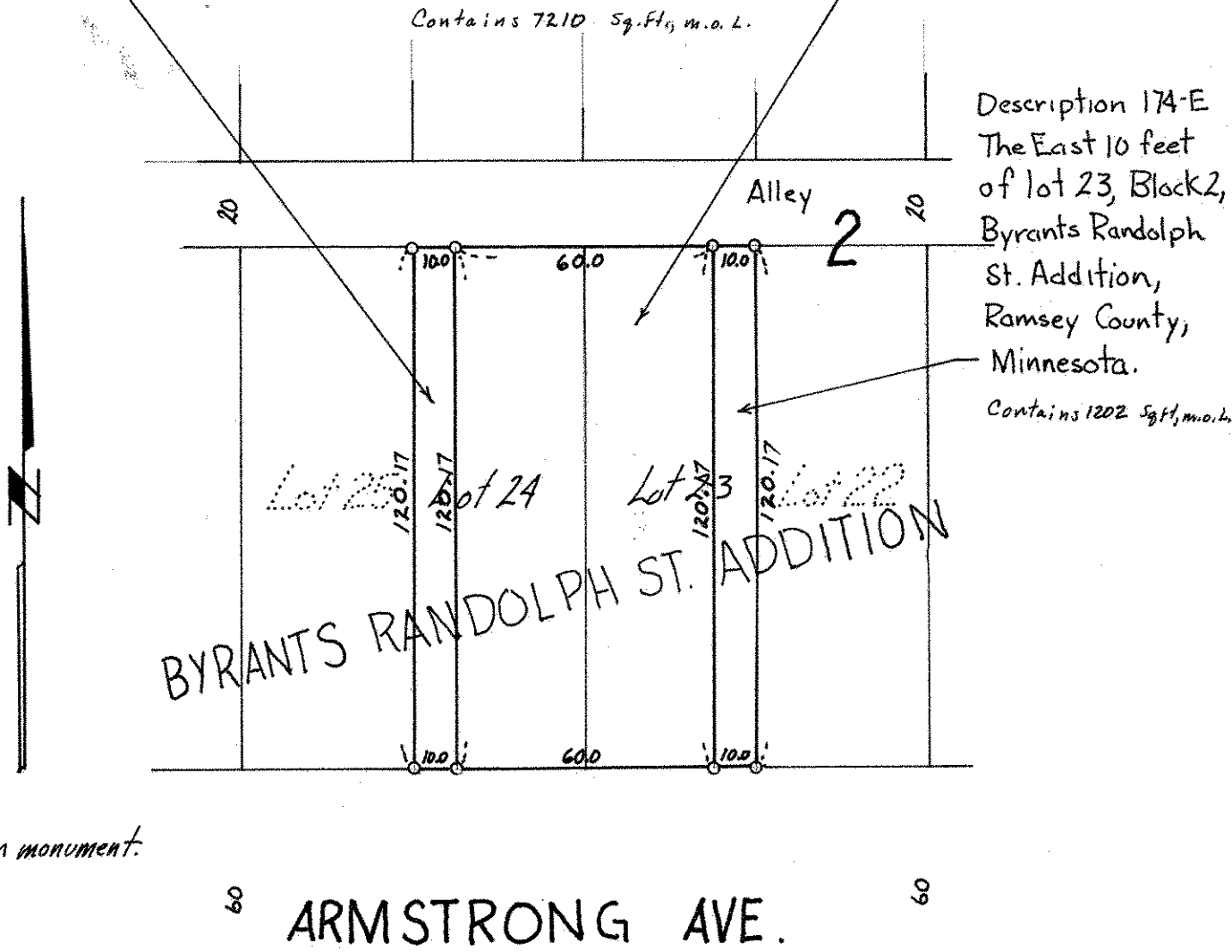
Lot 24 except the West 10 feet thereof and
lot 23 except the East 10 feet thereof, Block 2,
Byrants Randolph St. Addition,
Ramsey County, Minnesota.

Contains 7210 Sq. Ft. m.o.L.

Description 174-E

The East 10 feet
of lot 23, Block 2,
Byrants Randolph
St. Addition,
Ramsey County,
Minnesota.

Contains 1202 Sq. Ft. m.o.L.



o denotes iron monument.