

FROM THE OFFICE OF

# CHARLES O. GEORGI COMPANY

2215 West County Road B

Saint Paul, Minnesota 55113

REGISTERED CIVIL ENGINEER AND LAND SURVEYOR

## Certificate of Survey

I Hereby Certify that this plat shows a survey made by me of the property described on this plat, and that the corners are correctly placed as shown, and that all locations have been correctly shown.

Project No. Minn A-1-7  
Parcel 46-B  
Area = 2650 Sq. Ft., m.o.l.

Surveyed For Housing Authority

Date February 1974

Scale 1" = 30'

By Charles O. Georgi  
REGISTERED LAND SURVEYOR

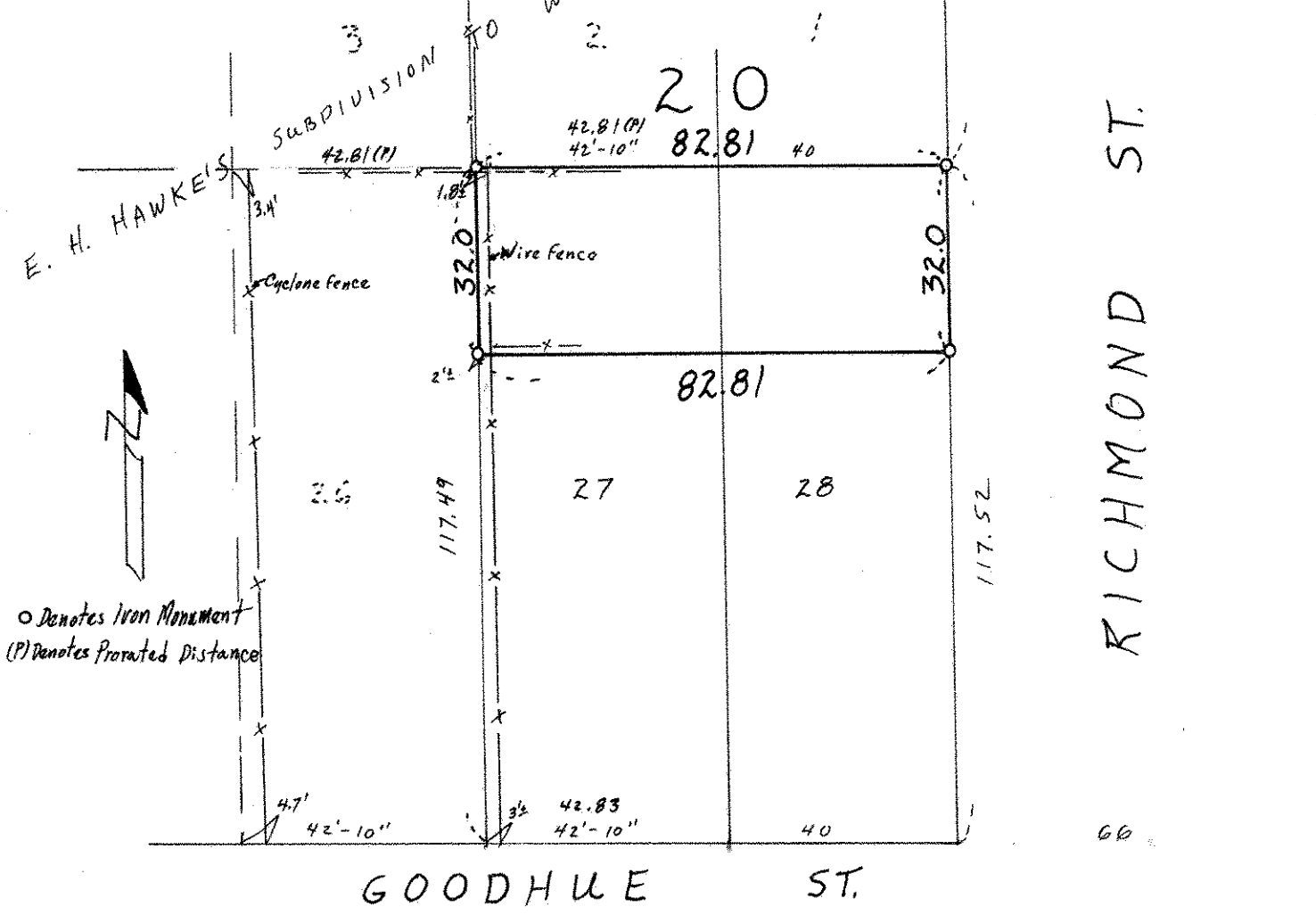
**Description:**

The North 32.0 Feet of Lots 27 and 28, Block 20, E.H. Hawke's Subdivision to Winslow's addition to the Town of St. Paul, Minnesota.

Ramsey County, Minnesota

**\*Surveyor's Note:**

Survey of lot in accord with small proration in block. South line of block checks record plat, however lines of occupancy are off 2 to 4 feet throughout block up to lot line between lots 21 and 22, which is at record position.



○ Denotes Iron Monument  
(P) Denotes Prorated Distance