

FROM THE OFFICE OF

CHARLES O. GEORGI COMPANY

2215 West County Road B

Saint Paul, Minnesota 55113

REGISTERED CIVIL ENGINEER AND LAND SURVEYOR

**Certificate
of Survey**

*I Hereby Certify that this plat shows a survey made by me of the property described on this plat, and that the corners are correctly placed as shown, and that all locations have been correctly shown. *Not Revised Street Description**

Project No. Minn A-1-7
Parcel No. 60-1
Area 8,464 sq. ft.

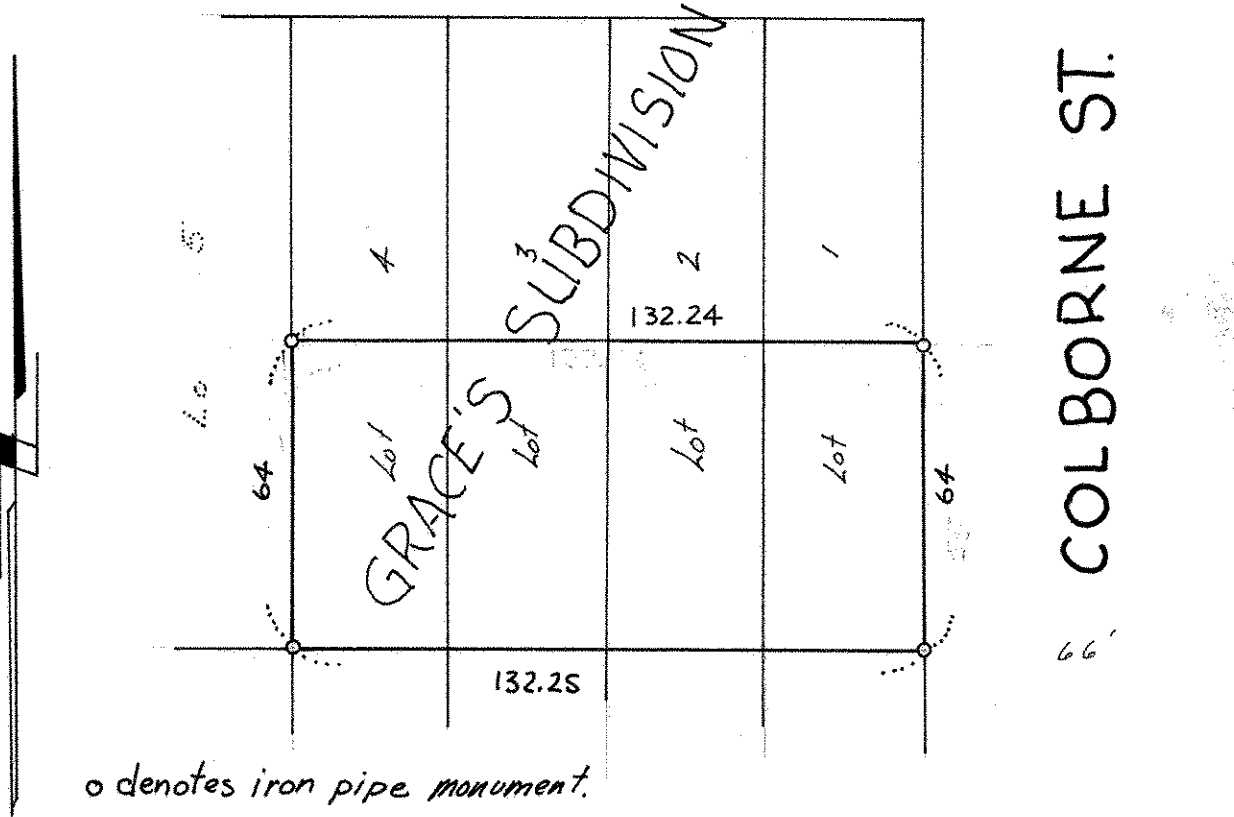
Surveyed For *Housing Authority*
Date *June 1974*
Scale *1" = 40'*

By *Charles O. Georgi*
REGISTERED LAND SURVEYOR

Description:

*The South 64 feet of lots 1, 2, 3, and 4,
Grace's Subdivision of Block 2,
Wilkes' Addition to Saint Paul,
Ramsey County, Minnesota.*

SUPERIOR ST.



o denotes iron pipe monument.