

FROM THE OFFICE OF

CHARLES O. GEORGI COMPANY

2215 West County Road B

Saint Paul, Minnesota 55113

REGISTERED CIVIL ENGINEER AND LAND SURVEYOR



I Hereby Certify that this plat shows a survey made by me of the property described on this plat, and that the corners are correctly placed as shown, and that all locations have been correctly shown.

Surveyed For *Charles Hedenstrom*

Date *October 1974*

Scale *1" = 50'*

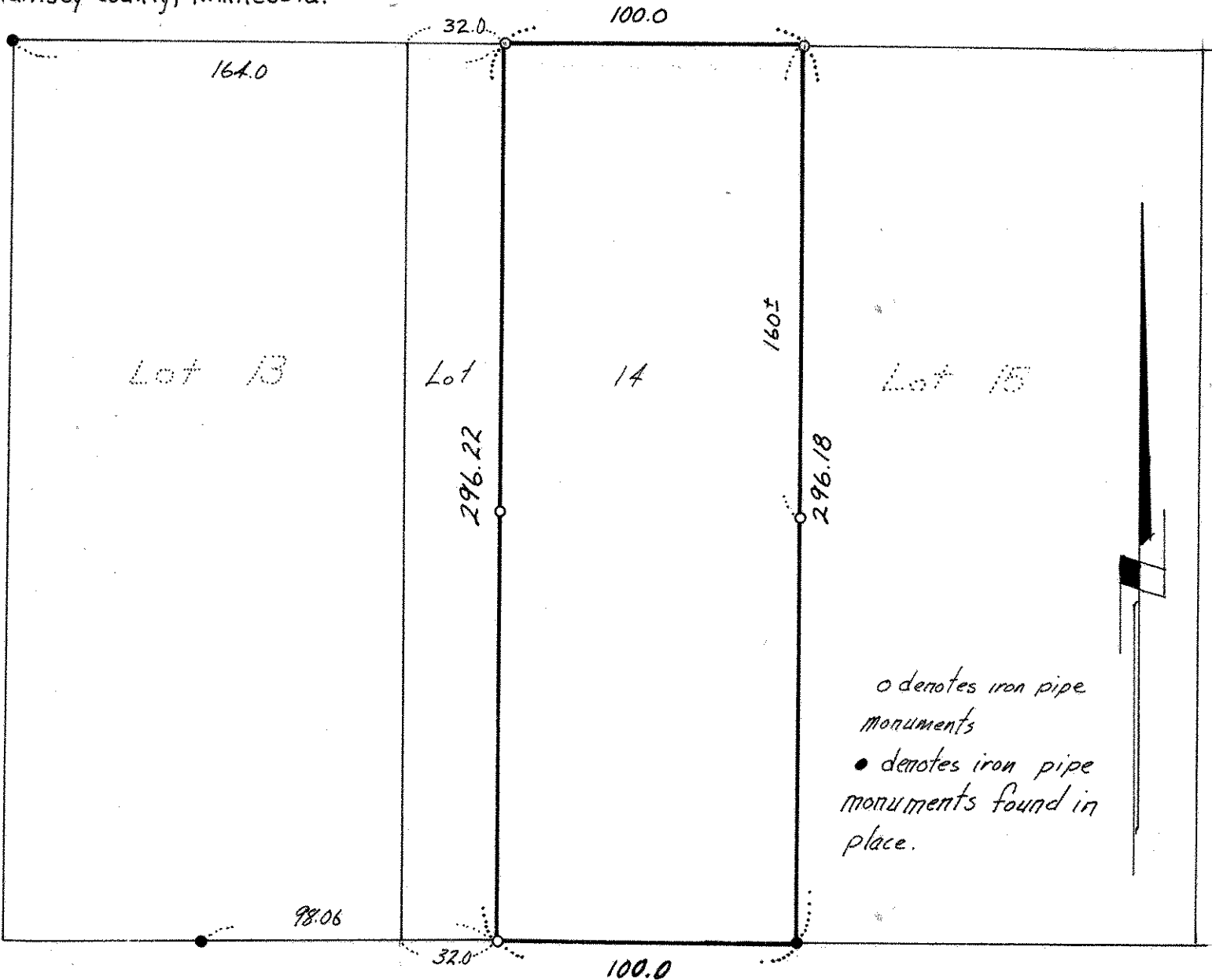
By *Charles O. Georgi*
REGISTERED LAND SURVEYOR

Description:

Lot 14 except the West 32 feet thereof,
Diedrich's Homesites,⁹
Ramsey County, Minnesota.

RYAN AVE.

60



o denotes iron pipe monuments
● denotes iron pipe monuments found in place.